



Phase 2

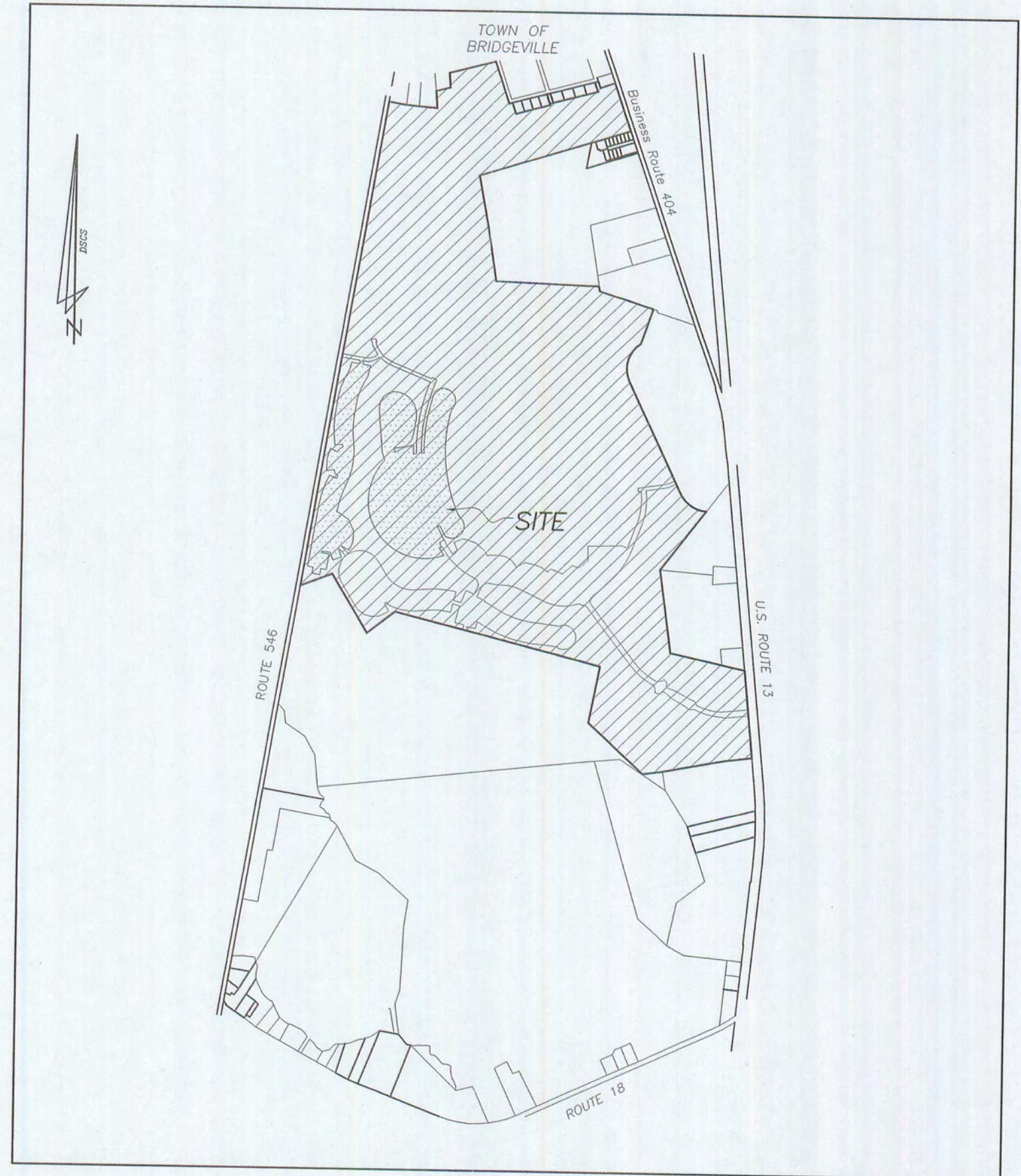
February 2009 Plat Reference 128/20

Lots on Harlequin Loop were revised to convert single family attached lots to single family detached lots

- NOTES:**
- 1) THE SUBJECT LANDS ARE LOCATED IN THE CORPORATE LIMITS OF THE TOWN OF BRIDGEVILLE.
 - 2) N/F DENOTES NOW OR FORMERLY
 - 3) THE LOT PREFIX "OS" DENOTES OPEN SPACE
 - 4) THIS SUBDIVISION WAS PREPARED WITHOUT BENEFIT OF REVIEW OF AN ABSTRACT OF TITLE.
 - 5) ——— DENOTES COMPUTED POINT UNLESS OTHERWISE INDICATED
 - 6) THE ROADS SHOWN HEREON ARE DEDICATED TO PUBLIC USE, AND WILL BE MAINTAINED BY THE TOWN OF BRIDGEVILLE.
 - 7) ALONG THE ROAD FRONTAGES OF ALL LOTS THERE SHALL BE A 10' WIDE UTILITY EASEMENT.
 - 8) STANDARD BUILDING RESTRICTION LINES (BRL):
 FRONT: 10'
 REAR: 15'
 SIDE: 3'
 - 9) THE OWNER/DEVELOPER IS REQUIRED TO OBTAIN A LETTER OF NO OBJECTION FROM THE DEPARTMENT OF TRANSPORTATION FOR THE ADDITIONAL PHASES CONSTRUCTED UNDER THIS DEVELOPMENT.

TABLE OF AREAS

TOTAL AREA OF LOTS	= 51.963 Ac.±
TOTAL AREA BEFORE PHASE TWO	= 673.912 Acres± (SEE SHEET 2)
TOTAL # OF LOTS	329
TOTAL AREA IN RIGHTS-OF-WAY	= 19.119 Ac.±
TOTAL AREA IN OPEN SPACE	= 13.162 Ac.±
TOTAL AREA PHASE TWO	= 84.244 Ac.±
TOTAL AREA REMAINING AFTER PHASE TWO	= 589.668 Acres±



VICINITY MAP
1" = 1,200'

APPROVED 2/2/09 BY [Signature]
 DATE AUTHORIZED PERSON
 PASSWATERS FARM, LLC

APPROVED 2.2.09 BY Bonnie Wall
 DATE TOWN MANAGER
 TOWN OF BRIDGEVILLE

THIS PLATTED AND IS NOT WITHIN THE JURISDICTION OF THE COUNTY PLANNING AND ZONING COMMISSION. 1/28

THIS PLAT SUPERCEDES PLATS ENTITLED "SUBDIVISION PLAT, PHASE TWO, HERITAGE SHORES" FILED FOR RECORD IN THE OFFICE OF RECORDER OF DEEDS IN PLOT VOLUME 103, PAGES 212 TO 218 INsofar AS THE LOTS 262-286 HAVE BEEN RECONFIGURED.

Recorder of Deeds
 John F. Bland
 Feb 17, 2009 1:35A
 Sussex County
 Doc. Surcharge Paid
 #58022 CR

[Signature]
 2/2/09
 DATE SEAL

McCRONE
 ENGINEERING & SURVEYING
 ENVIRONMENTAL SCIENCES
 LAND PLANNING & SURVEYING
 CONSTRUCTION SERVICES

207 NORTH LIBERTY STREET
 SUITE 100
 CENTREVILLE, MARYLAND
 (410) 759-2237

ANNAPOLIS-CENTREVILLE-EDUWON-SALISBURY-DOVER

DATE	AUGUST 2005	SCALE	AS SHOWN
JOB NO.	01020030	DRAWN BY	ME
PROJECT		DESIGNED BY	ME
DATE	12/2005	APPROVED BY	
	10/2006	REVISION	
	11/2006	MISC. REVISIONS	
		ROAD NAME REVISION	
		RECONFIGURE	
		LOTS 262-286	

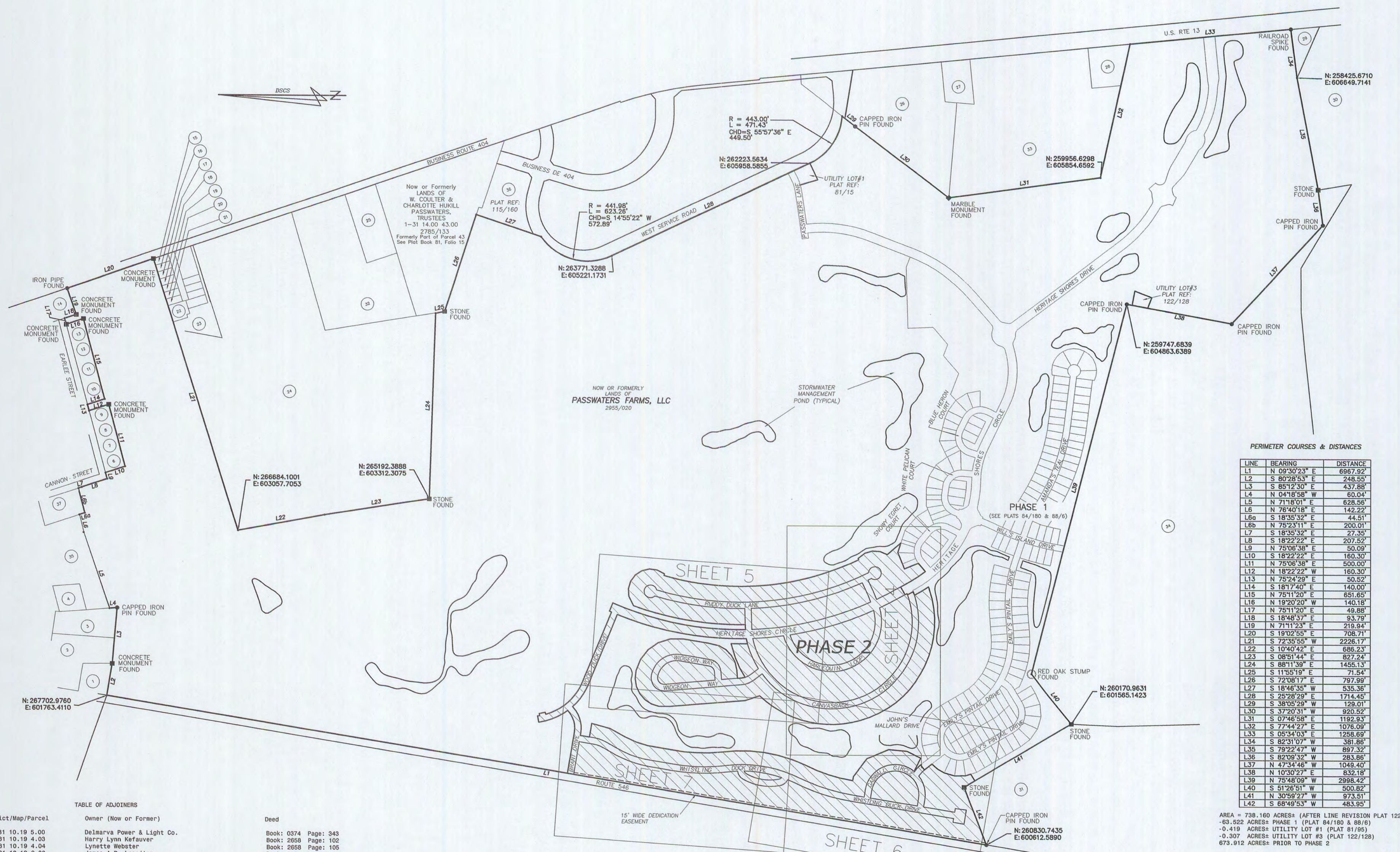
SUBDIVISION PLAT
 PHASE TWO
HERITAGE SHORES
 THE TOWN OF BRIDGEVILLE
 NORTHWEST FORK HUNDRED
 SUSSEX CO. DELAWARE
 PREPARED FOR ROBERT D. RAUCH AND ASSOCIATES

CERTIFICATION OF ACCURACY

I, ROBERT E. RIGDON JR., CERTIFY THAT THIS FINAL PLAT IS A CORRECT REPRESENTATION OF THE SURVEY MADE, THAT ALL MONUMENTS INDICATED HEREON EXIST OR WILL BE SET AND ARE CORRECTLY SHOWN.

Robert E. Rigdon, Jr.
 ROBERT E. RIGDON JR.
 PROFESSIONAL LAND SURVEYOR, DE. NO. 676

2/2/09
 DATE



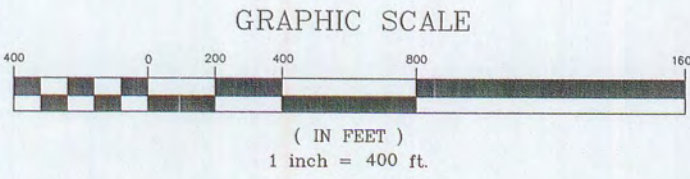
PERIMETER COURSES & DISTANCES

LINE	BEARING	DISTANCE
L1	N 09°30'23" E	6987.92'
L2	S 80°28'53" E	248.55'
L3	S 85°12'30" E	437.88'
L4	N 04°18'58" W	60.04'
L5	N 71°18'01" E	628.56'
L6	N 76°40'18" E	142.22'
L6a	S 18°35'32" E	44.51'
L6b	N 75°23'11" E	200.01'
L7	S 18°35'32" E	27.35'
L8	S 18°22'22" E	207.52'
L9	N 75°06'36" E	50.09'
L10	S 18°22'22" E	160.30'
L11	N 75°06'36" E	500.00'
L12	N 18°22'22" W	160.30'
L13	N 75°24'29" E	50.52'
L14	S 18°17'40" E	140.00'
L15	N 75°11'20" E	651.65'
L16	N 19°20'20" W	140.18'
L17	N 75°11'20" E	49.88'
L18	S 18°48'57" E	93.79'
L19	N 71°11'23" E	219.94'
L20	S 19°02'55" E	708.71'
L21	S 72°35'55" W	2226.17'
L22	S 10°40'42" E	686.23'
L23	S 08°51'44" E	827.24'
L24	S 88°11'39" E	1455.13'
L25	S 11°55'19" E	71.54'
L26	S 72°08'17" E	797.99'
L27	S 18°46'35" W	535.36'
L28	S 25°28'29" E	1714.45'
L29	S 38°05'29" W	128.01'
L30	S 37°20'31" W	920.52'
L31	S 07°46'58" E	1192.93'
L32	S 77°44'27" E	1076.09'
L33	S 05°34'03" E	1258.69'
L34	S 82°31'07" W	381.86'
L35	S 79°22'47" W	897.32'
L36	S 82°09'32" W	283.86'
L37	N 47°34'46" W	1049.40'
L38	N 10°30'27" E	832.18'
L39	N 75°48'09" W	2998.42'
L40	S 51°26'51" W	500.82'
L41	N 30°59'27" W	973.51'
L42	S 88°49'53" W	483.95'

AREA = 798.180 ACRES; (AFTER LINE REVISION PLAT 122/131)
 -63.622 ACRES; PHASE 1 (PLAT 84/180 & 88/6)
 -0.419 ACRES; UTILITY LOT #1 (PLAT 81/95)
 -0.307 ACRES; UTILITY LOT #3 (PLAT 122/128)
 673.912 ACRES; PRIOR TO PHASE 2

TABLE OF ADJOINERS

Number	District/Map/Parcel	Owner (Now or Former)	Deed
1	1-31 10.19 5.00	Delmarva Power & Light Co.	Book: 0374 Page: 343
2	1-31 10.19 4.03	Harry Lynn Kefauver	Book: 2658 Page: 102
3	1-31 10.19 4.04	Lynette Webster	Book: 2658 Page: 105
4	1-31 10.19 6.00	James A.D. Lassiter	Book: 2483 Page: 218
5	1-19 10.19 7.01	Woodbridge School District	Book: 619 Page: 064
6	1-31 10.20 131.00	John C., Jr. & Deborah A. Street	Book: 0737 Page: 202
7	1-31 10.20 132.00	Layton & Ora M. Harris	Book: 1427 Page: 256
8	1-31 10.20 133.00	Conrad S. & Wendy Boisvert	Book: 3176 Page: 141
9	1-31 10.20 115.00	I. Emerson & Ruth A. Isaacs	Book: 3116 Page: 292
10	1-31 10.20 134.00	Perry D. & Grace M. Williamson	Book: 1654 Page: 075
11	1-31 10.20 135.00	Victor C. & Penny A. Williamson	Book: 1710 Page: 011
12	1-31 10.20 136.00	William K. & Kay L. Seitz	Book: 1958 Page: 295
13	1-31 10.20 137.00	Robert L., Jr. & Juanita Ann Castle	Book: 2786 Page: 221
14	1-31 10.20 107.00	ARC HUD Inc.	Book: 2150 Page: 020
15	1-31 14.00 37.00	Jennifer L. Keim	Book: 2324 Page: 094
16	1-31 14.00 36.00	Maxine J. & Robert H. Powers	Book: 0393 Page: 247 (Will Records)
17	1-31 14.00 35.00	Lillian Myer Richards	Book: 0348 Page: 678
18	1-31 14.00 34.00	David W. & Linda S. Kenton	Book: 2943 Page: 020
19	1-31 14.00 33.00	Richard L. & Barbara Short	Book: 0858 Page: 192
20	1-31 14.00 32.00	George E. Klingner	Book: 2200 Page: 210
21	1-31 14.00 31.00	Gilbert C. & Lorene Kandler	Book: 0853 Page: 044
22	1-31 14.00 30.00	Robert L. & Margaret C. Breeden	Book: 3096 Page: 194
23	1-31 14.00 29.01	George A. & Emma J. Fleetwood	Book: 1643 Page: 291
24	1-31 14.00 29.00	Karen L. Walls	Book: 2297 Page: 171
25	1-31 14.00 43.01	Timothy G.S. Curry	Book: 2013 Page: 016
26	1-31 15.00 15.00	Steve C. & Rita Cannon	Book: 3628 Page: 135
27	1-31 15.00 16.00	Barbara M. Sylvia, Trustee	Book: 2718 Page: 213
28	1-31 15.00 18.00	Lynn W. Carter & Wilfred L. Graves	Book: 2332 Page: 209
29	1-31 19.00 2.00	Albert C., Jr. & Twila M. Anderson	Book: 2223 Page: 352
30	1-31 19.00 3.00	New Development Corp.	Book: 2035 Page: 194
31	1-31 19.00 36.00	Kenneth W. & Bernice M. Wilson	Book: 2150 Page: 043
32	1-31 14.00 43.00	W. Coulter & Charlotte H. Passwaters, Trustees	Book: 1657 Page: 026
33	1-31 15.00 17.00	Helen E. Passwaters	Book: 404 Page: 658
34	1-31 18.00 36.01	Wilson Farm LLC	Book: 2852 Page: 132
35	1-31 10.00 80.02	Commissioners of Bridgeville	Book: 3080 Page: 346
36	1-31 14.00 44.01	Heritage Rocks Properties Two, LLC	Book: 3638 Page: 347
37	1-31 10.00 80.01	Commissioners of Bridgeville	Book: 3488 Page: 221



SEAL
DATE 2/16/09

McCRONE
 ENGINEERING & SURVEYING
 ENVIRONMENTAL SCIENCES
 LAND PLANNING & SURVEYING
 CONSTRUCTION SERVICES

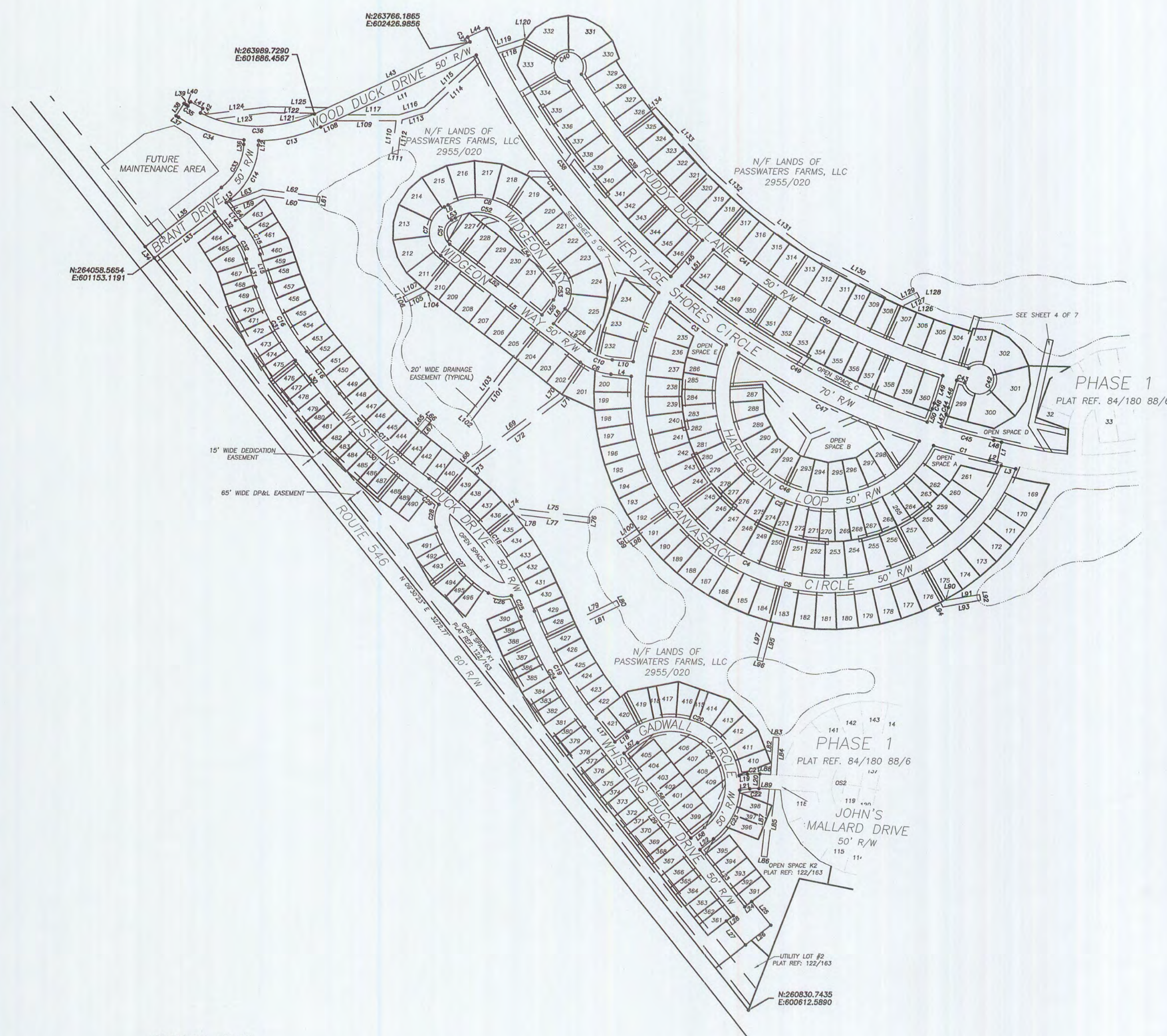
207 NORTH LIBERTY STREET
 SUITE 100
 CENTREVILLE, MARYLAND
 (410) 758-2237

ANNAPOLIS-CENTREVILLE-ELKTON-SALISBURY-DOVER

SCALE: 1" = 400'
 DATE: AUGUST 2005
 JOB NO.: G1020030
 FOLDER REF:
 DESIGNED BY:
 APPROVED BY:
 REVISION:
 DATE: 12/2005
 MISC. REVISIONS:
 10/2006 ROAD NAME REVISION
 11/2008 RECONFIGURE
 035, 202-256

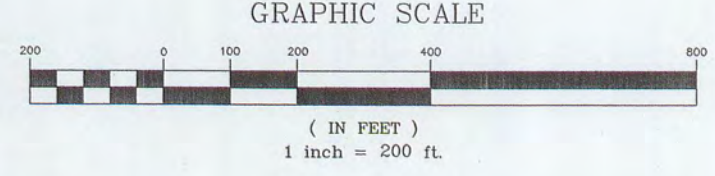
HERITAGE SHORES
 PHASE TWO
 THE TOWN OF BRIDGEVILLE
 NORTHWEST FORK HUNDRED
 SUSSEX CO. DELAWARE
 PREPARED FOR ROBERT D. RAUCH AND ASSOCIATES

SHEET NO. — 2 OF 7
 CADD FILE — 02030PH2SUR2



EASEMENT COURSES & DISTANCES

LINE	BEARING	DISTANCE
L59	S 63°39'24" E	119.14'
L60	S 34°59'49" E	193.17'
L61	N 55°00'11" E	20.00'
L62	N 34°59'49" W	198.28'
L63	N 63°39'24" W	150.31'
L64	N 09°30'23" E	47.68'
L65	N 88°16'57" E	50.98'
L66	S 01°43'03" E	20.00'
L67	S 88°16'57" W	50.98'
L68	N 87°16'32" E	11.63'
L69	S 79°15'39" E	387.17'
L70	N 82°30'40" E	8.83'
L71	S 82°30'40" W	13.52'
L72	N 78°15'39" W	388.02'
L73	S 87°16'32" W	9.63'
L74	S 81°29'02" E	14.45'
L75	S 35°32'11" E	257.80'
L76	S 54°27'49" W	20.00'
L77	N 35°32'11" W	248.35'
L78	N 61°29'02" W	5.99'
L79	S 87°53'07" E	161.55'
L80	S 19°17'09" W	20.02'
L81	N 63°33'07" W	162.54'
L82	N 51°09'26" E	127.75'
L83	S 38°40'34" E	20.00'
L84	S 51°19'26" W	127.75'
L85	S 54°28'00" W	233.59'
L86	N 35°33'30" W	20.00'
L87	N 54°26'30" E	232.31'
L88	S 38°40'34" E	37.39'
L89	N 38°40'34" W	35.26'
L90	S 19°13'07" W	3.29'
L91	S 52°24'53" E	116.16'
L92	S 37°53'07" W	20.00'
L93	N 82°24'53" W	130.59'
L94	N 19°13'07" E	17.72'
L95	S 82°24'53" W	137.59'
L96	N 22°37'48" W	20.00'
L97	N 62°22'12" E	137.52'
L98	N 78°05'01" W	57.12'
L99	N 11°54'59" E	20.00'
L100	S 78°05'01" E	57.12'
L101	S 85°20'43" W	260.06'
L102	N 04°39'17" W	20.00'
L103	N 85°20'43" E	260.06'
L104	S 85°20'43" W	2.29'
L105	N 88°51'34" W	80.62'
L106	N 21°08'28" E	20.00'
L107	S 88°51'34" E	74.49'
L108	S 67°31'55" E	52.24'
L109	S 42°29'32" E	208.49'
L110	S 54°38'28" W	115.38'
L111	S 35°21'32" E	20.00'
L112	N 54°38'28" E	120.22'
L113	S 69°23'53" E	89.84'
L114	S 86°23'30" E	246.16'
L115	N 86°23'30" W	249.85'
L116	N 59°23'53" W	80.04'
L117	N 42°29'32" W	176.55'
L118	N 60°37'08" W	86.13'
L119	S 60°37'08" E	103.06'
L120	S 12°56'31" E	6.18'
L121	S 62°31'55" E	6.13'
L122	N 41°42'27" W	160.93'
L123	N 49°18'32" W	184.78'
L124	S 49°18'32" E	222.61'
L125	S 41°42'27" E	203.59'
L126	S 71°12'15" W	6.26'
L127	S 89°08'53" E	57.87'
L128	S 20°51'07" W	20.00'
L129	S 69°08'53" E	56.04'
L130	N 13°53'45" W	359.66'
L131	N 06°03'01" W	241.35'
L132	N 02°28'02" E	183.20'
L133	N 06°19'22" E	287.11'
L134	N 79°56'58" W	19.23'



COURSES & DISTANCES PERIMETER OF ROADS

LINE	BEARING	DISTANCE
L1	S 60°14'55" W	70.00'
L2	N 29°45'05" W	26.94'
C1	R=260.00'	L=196.68'
C2	N 27°33'02" W	196.63'
C2	R=391.31'	L=1225.42'
C3	N 16°33'32" W	782.60'
C3	R=2560.00'	L=541.94'
C4	N 05°03'28" W	241.85'
C4	R=630.00'	L=2081.72'
L3	S 29°45'05" E	50.70'
C5	R=880.00'	L=1938.64'
L4	N 28°54'43" W	1345.66'
L4	N 37°14'19" W	69.76'
C6	R=200.00'	L=113.74'
L5	N 20°58'48" W	112.21'
L5	N 04°39'17" W	201.07'
C7	R=100.00'	L=197.59'
L6	N 51°57'05" E	166.98'
L6	S 71°26'32" E	14.83'
C8	R=200.00'	L=292.97'
C8	S 30°54'34" E	259.95'
L7	S 09°37'24" W	231.87'
C9	R=100.00'	L=132.16'
L8	S 85°20'43" W	63.94'
L9	S 04°39'17" W	153.95'
C10	R=150.00'	L=85.30'
C10	S 20°58'48" E	84.16'
L10	S 37°14'19" E	71.60'
C11	R=600.00'	L=1524.70'
L11	N 67°42'31" E	263.22'
C12	R=2560.00'	L=1033.10'
L12	N 10°20'22" E	1026.10'
L11	N 67°31'55" W	284.03'
C13	R=500.00'	L=219.01'
L13	N 54°59'01" W	217.26'
L12	S 52°24'53" W	165.01'
C14	R=250.00'	L=214.14'
L14	S 74°58'06" W	207.65'
L13	N 80°29'37" W	18.39'
L14	S 09°30'23" W	108.45'
C15	R=300.00'	L=104.93'
L15	S 19°31'36" W	104.40'
L15	S 52°32'48" W	101.64'
C16	R=775.00'	L=271.07'
C16	S 19°31'36" W	269.69'
L16	S 09°30'23" W	181.09'
C17	R=475.00'	L=422.63'
C17	S 01°17'53" W	421.19'
C18	R=1025.00'	L=587.39'
C18	S 09°30'23" W	579.38'
L17	N 17°42'54" W	435.47'
C19	R=1425.00'	L=422.63'
C19	S 09°30'23" W	103.71'
L18	S 80°29'37" E	59.23'
C20	R=234.85'	L=491.14'
C20	S 20°34'53" E	406.41'
L19	S 50°40'10" E	28.77'
C21	R=200.00'	L=41.98'
C21	S 44°40'22" E	41.79'
L20	S 51°18'26" W	50.00'
C22	R=150.00'	L=31.40'
C22	N 44°40'22" W	31.34'
L21	N 50°40'10" W	34.16'
C23	R=234.85'	L=166.27'
C23	S 73°33'53" W	160.60'
L22	N 80°29'37" W	59.23'
L23	S 80°29'37" E	246.88'
L24	S 80°29'37" E	30.00'
L25	S 09°30'23" W	103.00'
L26	N 80°29'37" W	110.00'
L27	N 09°30'23" E	105.00'
L28	S 80°29'37" E	30.00'
L29	N 09°30'23" E	820.28'
C24	R=1525.00'	L=436.96'
C24	N 17°42'54" E	435.47'
C25	R=78.00'	L=78.26'
C25	N 23°37'27" E	78.23'
C26	R=82.00'	L=81.79'
C26	S 35°46'15" W	78.12'
C27	R=425.00'	L=263.86'
C27	N 09°30'22" E	268.04'

THIS PLAT SUPERCEDES PLATS ENTITLED "SUBDIVISION PLAT, PHASE TWO, HERITAGE SHORES" FILED FOR RECORD IN THE OFFICE OF RECORDER OF DEEDS IN PLOT VOLUME 103, PAGES 212 TO 218 INsofar AS THE LOTS 262-286 HAVE BEEN RECONFIGURED.

McCRONE
 ENGINEERING & SURVEYING
 ENVIRONMENTAL SCIENCES
 LAND PLANNING & SURVEYING
 CONSTRUCTION SERVICES

207 NORTH LIBERTY STREET
 SUITE 100
 CENTREVILLE, MARYLAND
 (410) 758-2237

DATE	AUGUST 2005	SCALE	1" = 200'
JOB NO.	GT020030	DESIGNED BY	WME
FOUNDER REF		APPROVED BY	
DATE	12/2005	REVISION	
	10/2006	MISC. REVISIONS	
	10/2006	ROAD NAME REVISION	
	11/2008	RECONFIGURE LOTS	
		REVISION	
		REVISION	
		REVISION	
		REVISION	

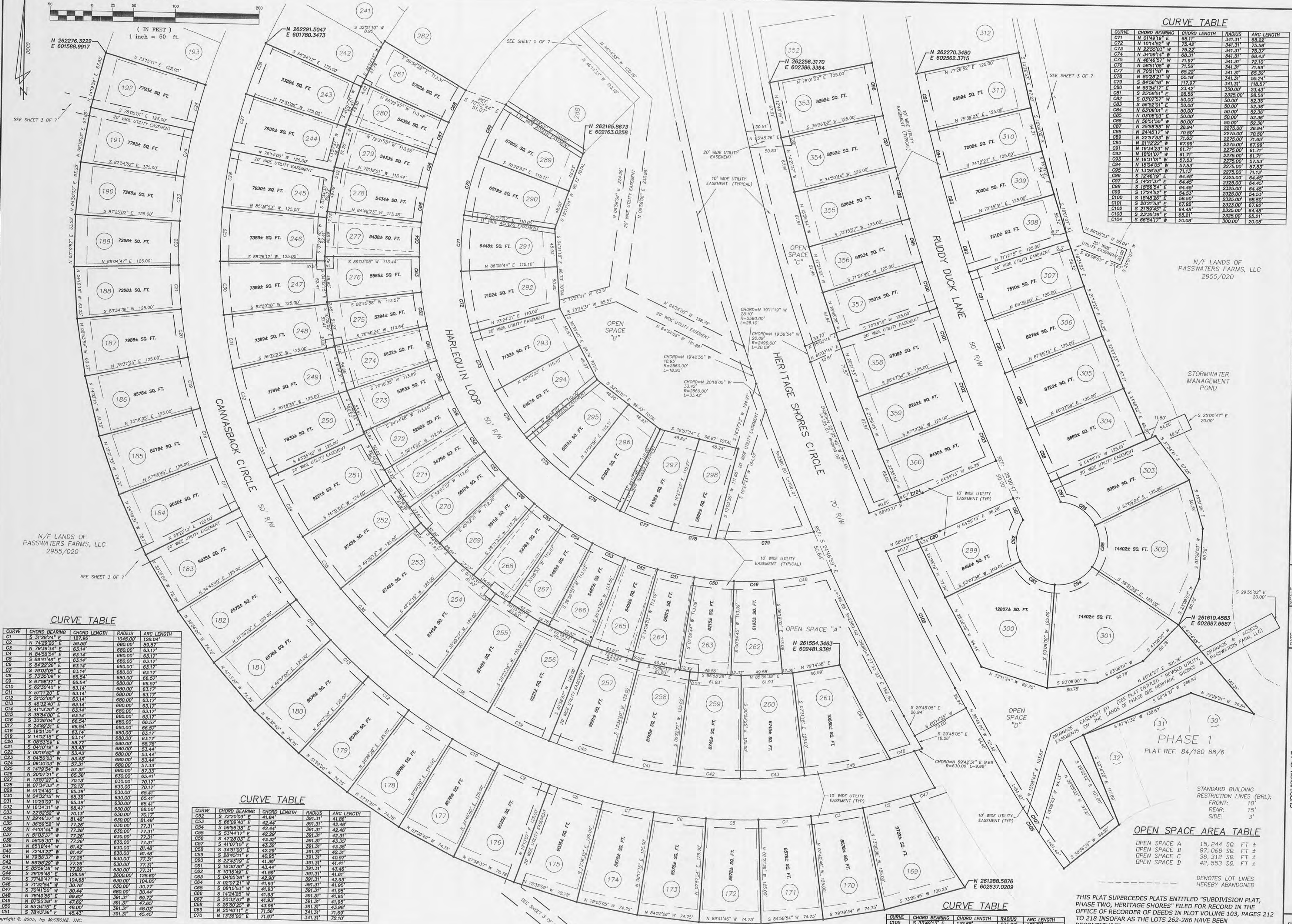
HERITAGE SHORES
 THE TOWN OF BRIDGEVILLE
 NORTHWEST FORK HUNDRED
 SUSSEX CO. DELAWARE
 PREPARED FOR ROBERT D. RAUCH AND ASSOCIATES

GRAPHIC SCALE



CURVE TABLE

CURVE	CHORD BEARING	CHORD LENGTH	RADIUS	ARC LENGTH
C01	N 01°48'19" E	68.11	341.31	68.22
C02	N 10°14'52" W	75.45	341.31	75.58
C03	N 22°58'03" W	75.22	341.31	75.37
C04	N 34°59'14" W	68.31	341.31	68.43
C05	N 46°46'57" W	71.97	341.31	72.10
C06	N 58°31'08" W	71.96	341.31	71.89
C07	N 70°21'10" W	65.22	341.31	65.32
C08	N 82°28'21" W	58.18	341.31	58.24
C09	N 94°26'19" W	51.27	341.31	51.37
C10	N 66°54'17" E	23.42	350.00	23.43
C81	S 25°59'51" E	28.56	2325.00	28.56
C82	S 03°07'57" W	50.00	50.00	50.00
C83	S 56°50'01" E	50.00	50.00	50.00
C84	N 63°08'01" E	50.00	50.00	50.00
C85	N 03°08'03" E	50.00	50.00	50.00
C86	N 56°51'56" W	50.00	50.00	50.00
C87	N 25°58'55" W	26.94	2276.00	26.94
C88	N 24°45'17" W	70.50	2276.00	70.50
C89	N 22°57'57" W	71.85	2275.00	71.85
C90	N 21°22'22" W	67.99	2275.00	67.99
C91	N 19°34'23" W	61.71	2275.00	61.71
C92	N 18°01'07" W	61.71	2275.00	61.71
C93	N 16°31'01" W	57.53	2275.00	57.53
C94	N 15°04'05" W	57.53	2275.00	57.53
C95	N 13°26'53" W	71.13	2275.00	71.13
C96	S 12°46'18" E	64.45	2325.00	64.45
C97	S 14°21'57" E	64.45	2325.00	64.45
C98	S 15°56'54" E	64.45	2325.00	64.45
C99	S 17°24'52" E	64.45	2325.00	64.45
C100	S 18°49'04" E	68.50	2325.00	68.50
C101	S 20°21'53" E	67.92	2325.00	67.92
C102	S 21°59'45" E	64.45	2325.00	64.45
C103	S 23°33'38" E	65.21	2325.00	65.21
C104	S 25°04'17" W	20.08	300.00	20.08



CURVE TABLE

CURVE	CHORD BEARING	CHORD LENGTH	RADIUS	ARC LENGTH
C1	S 31°28'24" E	127.98	1045.00	128.04
C2	N 74°29'20" E	58.55	680.00	58.57
C3	N 79°39'34" E	63.14	680.00	63.17
C4	N 84°58'54" E	63.14	680.00	63.17
C5	S 89°41'46" E	63.14	680.00	63.17
C6	S 84°22'26" E	63.14	680.00	63.17
C7	S 79°03'05" E	63.14	680.00	63.17
C8	S 73°54'09" E	66.54	680.00	66.54
C9	S 67°56'37" E	66.54	680.00	66.54
C10	S 62°30'40" E	63.14	680.00	63.17
C11	S 57°11'20" E	63.14	680.00	63.17
C12	S 51°52'00" E	63.14	680.00	63.17
C13	S 46°32'40" E	63.14	680.00	63.17
C14	S 41°13'20" E	63.14	680.00	63.17
C15	S 35°54'00" E	63.14	680.00	63.17
C16	S 30°26'04" E	66.54	680.00	66.54
C17	S 24°49'31" E	66.54	680.00	66.54
C18	S 19°21'55" E	63.14	680.00	63.17
C19	S 14°02'15" E	63.14	680.00	63.17
C20	S 08°53'59" E	58.77	680.00	58.78
C21	S 04°10'19" E	53.43	680.00	53.44
C22	S 00°19'52" W	53.43	680.00	53.44
C23	S 04°50'03" W	53.43	680.00	53.44
C24	S 09°30'03" W	57.31	680.00	57.33
C25	S 14°19'24" W	57.31	680.00	57.33
C26	S 19°07'21" E	65.38	630.00	65.41
C27	S 23°54'27" E	70.13	630.00	70.17
C28	N 01°34'43" E	70.13	630.00	70.17
C29	N 01°24'40" E	65.38	630.00	65.41
C30	N 04°32'15" W	65.38	630.00	65.41
C31	N 07°29'09" W	65.38	630.00	65.41
C32	N 10°54'31" W	65.38	630.00	65.41
C33	N 14°22'52" W	70.13	630.00	70.17
C34	N 17°48'37" W	81.42	630.00	81.48
C35	N 20°59'52" W	77.26	630.00	77.31
C36	N 24°01'24" W	77.26	630.00	77.31
C37	N 27°03'37" W	77.26	630.00	77.31
C38	N 30°05'50" W	77.26	630.00	77.31
C39	N 33°08'44" W	81.42	630.00	81.48
C40	N 36°12'22" W	81.42	630.00	81.48
C41	N 39°16'37" W	77.26	630.00	77.31
C42	N 42°20'59" W	77.26	630.00	77.31
C43	N 45°25'38" W	77.26	630.00	77.31
C44	N 48°29'46" E	128.80	2600.00	128.80
C45	N 74°24'27" W	104.68	630.00	104.80
C46	N 71°32'54" W	104.68	630.00	104.80
C47	N 70°41'50" W	104.68	630.00	104.80
C48	N 74°49'58" E	69.62	391.31	69.72
C49	N 72°52'28" E	47.62	391.31	47.69
C50	S 85°34'15" E	48.00	391.31	48.03
C51	S 78°43'36" E	45.43	391.31	45.45

CURVE TABLE

CURVE	CHORD BEARING	CHORD LENGTH	RADIUS	ARC LENGTH
C52	S 72°20'03" E	41.84	391.31	41.86
C53	S 66°09'40" E	42.44	391.31	42.46
C54	S 59°56'38" E	42.44	391.31	42.46
C55	S 53°44'17" E	42.29	391.31	42.31
C56	S 47°28'03" E	43.32	391.31	43.35
C57	S 41°07'15" E	43.32	391.31	43.35
C58	S 34°51'00" E	42.29	391.31	42.31
C59	S 28°45'11" E	40.85	391.31	40.87
C60	S 22°43'19" E	41.39	391.31	41.41
C61	S 16°30'30" E	43.44	391.31	43.46
C62	S 10°16'48" E	41.59	391.31	41.61
C63	S 04°03'28" E	42.90	391.31	42.93
C64	S 02°02'21" W	41.83	391.31	41.85
C65	S 01°15'53" W	41.83	391.31	41.85
C66	S 14°24'29" W	41.83	391.31	41.85
C67	S 20°32'57" W	41.83	391.31	41.85
C68	S 26°50'29" W	43.86	391.31	43.89
C69	N 29°40'11" E	71.58	341.31	71.69
C70	N 13°38'09" E	71.97	341.31	72.10

CURVE TABLE

CURVE	CHORD BEARING	CHORD LENGTH	RADIUS	ARC LENGTH
C105	S 33°49'13" E	135.68	835.00	135.80
C106	N 27°37'33" W	184.71	2480.00	184.76
C107	N 33°55'41" W	26.47	835.00	26.47

PHASE 1

PLAT REF. 84/180 88/6

OPEN SPACE AREA TABLE

OPEN SPACE A	15,244 SQ. FT. ±
OPEN SPACE B	87,068 SQ. FT. ±
OPEN SPACE C	38,312 SQ. FT. ±
OPEN SPACE D	42,553 SQ. FT. ±

DENOTES LOT LINES HEREBY ABANDONED

THIS PLAT SUPERCEDES PLATS ENTITLED "SUBDIVISION PLAT, PHASE TWO, HERITAGE SHORES" FILED FOR RECORD IN THE OFFICE OF RECORDER OF DEEDS IN PLOT VOLUME 103, PAGES 212 TO 218 INsofar as the lots 262-286 HAVE BEEN RECONFIGURED.

McCRONE
 ENGINEERING & SURVEYING
 LAND PLANNING & SURVEYING
 ENVIRONMENTAL SCIENCES
 CONSTRUCTION SERVICES

207 NORTH LIBERTY STREET
 CENTREVILLE, OHIO (410) 158-2237

ANNAPOLIS - EDITHVILLE - ELKTON - SALISBURY - DOVER

DATE	SCALE	DATE	SCALE
AUGUST 2005	1" = 50'		
JOB NO. 0102030	DRAWN BY WME	DESIGNED BY	
FOLDER REF		APPROVED BY	
DATE	REVISION	DATE	REVISION
12/2005	MISC. REVISIONS	12/2005	MISC. REVISIONS
10/2006	ROAD NAME REVISION	11/2006	ROAD NAME REVISION
	LOTS 262-286		LOTS 262-286

HERITAGE SHORES
 THE TOWN OF BRIDGEVILLE
 NORTHWEST FORK HUNDRED
 SUSSEX CO. DELAWARE
 PREPARED FOR ROBERT D. RAUCH AND ASSOCIATES

SUBDIVISION PLAT
 PHASE TWO

SHEET NO. — 4 OF 7
 CADD FILE — 02030PH2SUR4

LINE TABLE

LINE	BEARING	DISTANCE
L1	S 71°28'32" E	14.83'
L2	S 71°28'32" E	14.83'
L3	S 04°39'17" E	28.85'

CURVE TABLE

CURVE	CHORD BEARING	CHORD LENGTH	RADIUS	ARC LENGTH
C108	S 16°59'52" W	53.41'	680.00'	53.43'
C109	S 23°29'56" E	53.41'	680.00'	53.43'
C110	S 28°00'05" W	53.41'	680.00'	53.43'
C111	S 32°30'12" W	53.41'	680.00'	53.43'
C112	S 37°00'19" W	53.41'	680.00'	53.43'
C113	S 41°30'25" W	53.41'	680.00'	53.43'
C114	S 46°00'31" W	53.41'	680.00'	53.43'
C115	S 50°30'38" W	53.41'	680.00'	53.43'
C116	S 55°00'45" W	53.41'	680.00'	53.43'
C117	S 59°30'52" W	53.41'	680.00'	53.43'
C118	S 64°00'59" W	53.41'	680.00'	53.43'
C119	S 68°31'06" W	53.41'	680.00'	53.43'
C120	S 73°01'13" W	53.41'	680.00'	53.43'
C121	S 77°31'20" W	53.41'	680.00'	53.43'
C122	S 82°01'27" W	53.41'	680.00'	53.43'
C123	S 86°31'34" W	53.41'	680.00'	53.43'
C124	S 91°01'41" W	53.41'	680.00'	53.43'
C125	S 95°31'48" W	53.41'	680.00'	53.43'
C126	S 100°01'55" W	53.41'	680.00'	53.43'
C127	S 104°32'02" W	53.41'	680.00'	53.43'
C128	S 109°02'09" W	53.41'	680.00'	53.43'
C129	S 113°32'16" W	53.41'	680.00'	53.43'
C130	S 118°02'23" W	53.41'	680.00'	53.43'
C131	S 122°32'30" W	53.41'	680.00'	53.43'
C132	S 127°02'37" W	53.41'	680.00'	53.43'
C133	S 131°32'44" W	53.41'	680.00'	53.43'
C134	S 136°02'51" W	53.41'	680.00'	53.43'
C135	S 140°32'58" W	53.41'	680.00'	53.43'
C136	S 145°03'05" W	53.41'	680.00'	53.43'
C137	S 149°33'12" W	53.41'	680.00'	53.43'
C138	S 154°03'19" W	53.41'	680.00'	53.43'
C139	S 158°33'26" W	53.41'	680.00'	53.43'
C140	S 163°03'33" W	53.41'	680.00'	53.43'
C141	S 167°33'40" W	53.41'	680.00'	53.43'
C142	S 172°03'47" W	53.41'	680.00'	53.43'
C143	S 176°33'54" W	53.41'	680.00'	53.43'
C144	S 181°04'01" W	53.41'	680.00'	53.43'
C145	S 185°34'08" W	53.41'	680.00'	53.43'
C146	S 190°04'15" W	53.41'	680.00'	53.43'
C147	S 194°34'22" W	53.41'	680.00'	53.43'
C148	S 199°04'29" W	53.41'	680.00'	53.43'
C149	S 203°34'36" W	53.41'	680.00'	53.43'
C150	S 208°04'43" W	53.41'	680.00'	53.43'
C151	S 212°34'50" W	53.41'	680.00'	53.43'
C152	S 217°04'57" W	53.41'	680.00'	53.43'
C153	S 221°35'04" W	53.41'	680.00'	53.43'
C154	S 226°05'11" W	53.41'	680.00'	53.43'
C155	S 230°35'18" W	53.41'	680.00'	53.43'
C156	S 235°05'25" W	53.41'	680.00'	53.43'
C157	S 239°35'32" W	53.41'	680.00'	53.43'
C158	S 244°05'39" W	53.41'	680.00'	53.43'
C159	S 248°35'46" W	53.41'	680.00'	53.43'
C160	S 253°05'53" W	53.41'	680.00'	53.43'
C161	S 257°36'00" W	53.41'	680.00'	53.43'
C162	S 262°06'07" W	53.41'	680.00'	53.43'
C163	S 266°36'14" W	53.41'	680.00'	53.43'
C164	S 271°06'21" W	53.41'	680.00'	53.43'
C165	S 275°36'28" W	53.41'	680.00'	53.43'
C166	S 280°06'35" W	53.41'	680.00'	53.43'
C167	S 284°36'42" W	53.41'	680.00'	53.43'
C168	S 289°06'49" W	53.41'	680.00'	53.43'
C169	S 293°36'56" W	53.41'	680.00'	53.43'
C170	S 298°07'03" W	53.41'	680.00'	53.43'
C171	S 302°37'10" W	53.41'	680.00'	53.43'
C172	S 307°07'17" W	53.41'	680.00'	53.43'
C173	S 311°37'24" W	53.41'	680.00'	53.43'
C174	S 316°07'31" W	53.41'	680.00'	53.43'
C175	S 320°37'38" W	53.41'	680.00'	53.43'
C176	S 325°07'45" W	53.41'	680.00'	53.43'
C177	S 329°37'52" W	53.41'	680.00'	53.43'
C178	S 334°07'59" W	53.41'	680.00'	53.43'
C179	S 338°38'06" W	53.41'	680.00'	53.43'
C180	S 343°08'13" W	53.41'	680.00'	53.43'
C181	S 347°38'20" W	53.41'	680.00'	53.43'
C182	S 352°08'27" W	53.41'	680.00'	53.43'
C183	S 356°38'34" W	53.41'	680.00'	53.43'
C184	S 361°08'41" W	53.41'	680.00'	53.43'
C185	S 365°38'48" W	53.41'	680.00'	53.43'
C186	S 370°08'55" W	53.41'	680.00'	53.43'
C187	S 374°39'02" W	53.41'	680.00'	53.43'
C188	S 379°09'09" W	53.41'	680.00'	53.43'
C189	S 383°39'16" W	53.41'	680.00'	53.43'
C190	S 388°09'23" W	53.41'	680.00'	53.43'
C191	S 392°39'30" W	53.41'	680.00'	53.43'
C192	S 397°09'37" W	53.41'	680.00'	53.43'
C193	S 401°39'44" W	53.41'	680.00'	53.43'
C194	S 406°09'51" W	53.41'	680.00'	53.43'
C195	S 410°39'58" W	53.41'	680.00'	53.43'
C196	S 415°09'65" W	53.41'	680.00'	53.43'
C197	S 419°39'72" W	53.41'	680.00'	53.43'
C198	S 424°09'79" W	53.41'	680.00'	53.43'
C199	S 428°39'86" W	53.41'	680.00'	53.43'
C200	S 433°09'93" W	53.41'	680.00'	53.43'
C201	S 437°39'00" W	53.41'	680.00'	53.43'
C202	S 442°09'07" W	53.41'	680.00'	53.43'
C203	S 446°39'14" W	53.41'	680.00'	53.43'
C204	S 451°09'21" W	53.41'	680.00'	53.43'
C205	S 455°39'28" W	53.41'	680.00'	53.43'
C206	S 460°09'35" W	53.41'	680.00'	53.43'
C207	S 464°39'42" W	53.41'	680.00'	53.43'
C208	S 469°09'49" W	53.41'	680.00'	53.43'
C209	S 473°39'56" W	53.41'	680.00'	53.43'
C210	S 478°09'63" W	53.41'	680.00'	53.43'
C211	S 482°39'70" W	53.41'	680.00'	53.43'

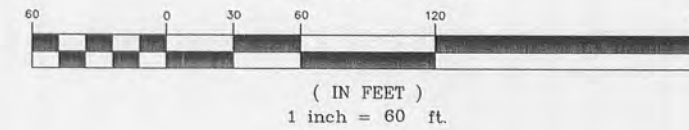
OPEN SPACE AREA TABLE

OPEN SPACE E	16,073 SQ. FT ±
OPEN SPACE F	9,639 SQ. FT ±
OPEN SPACE G	12,582 SQ. FT ±

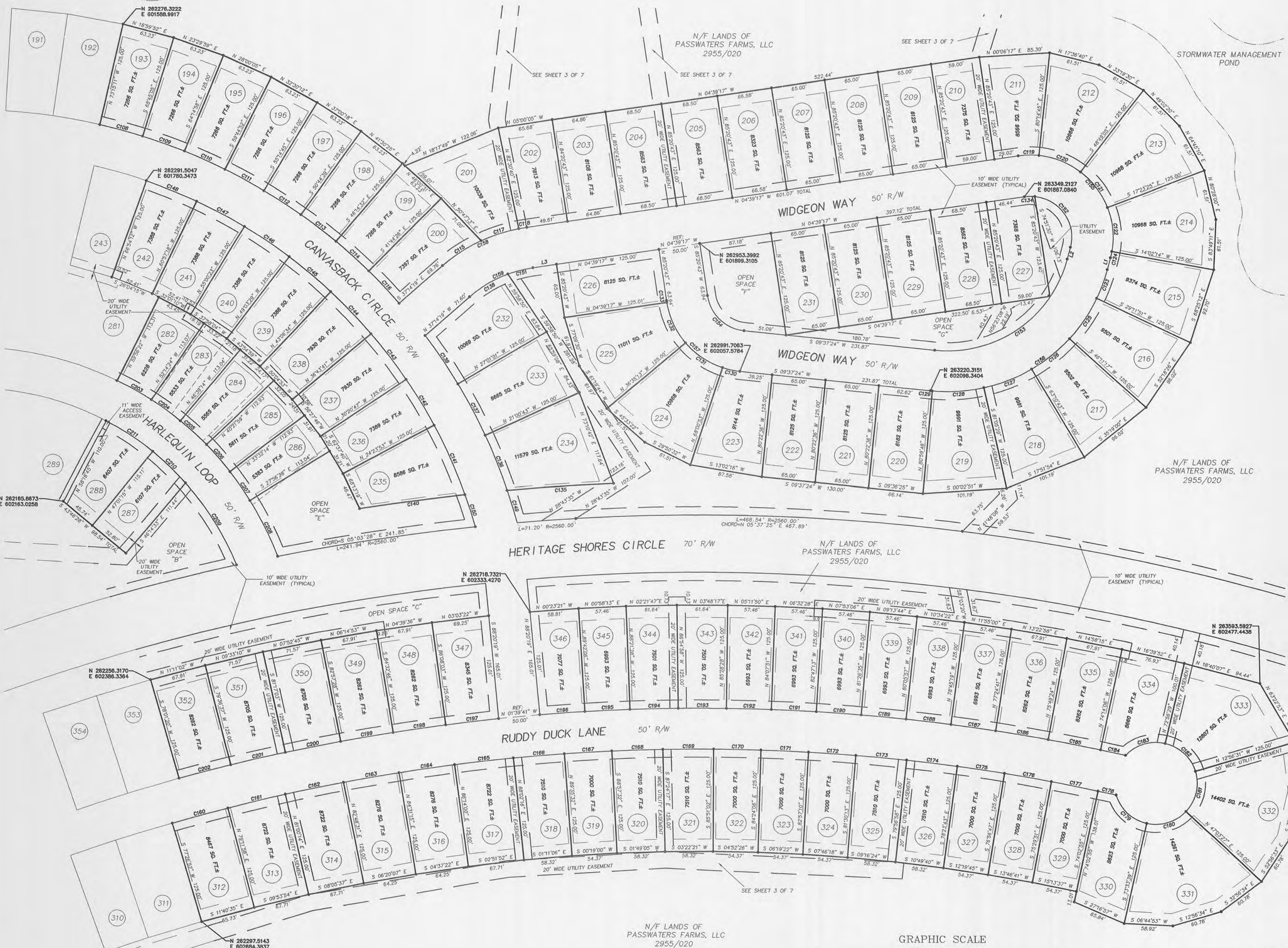
STANDARD BUILDING RESTRICTION LINES (BRL):
 FRONT: 10'
 REAR: 15'
 SIDE: 3'

DENOTES LOT LINES HEREBY ABANDONED

GRAPHIC SCALE



THIS PLAT SUPERCEDES PLATS ENTITLED "SUBDIVISION PLAT, PHASE TWO, HERITAGE SHORES" FILED FOR RECORD IN THE OFFICE OF RECORDER OF DEEDS IN PLOT VOLUME 103, PAGES 212 TO 218 INSOFAR AS THE LOTS 262-286 HAVE BEEN RECONFIGURED.



DATE: AUGUST 2005
 JOB NO.: G102030
 FOLDER REF: 103

SCALE: 1" = 60'
 DRAWN BY: JME
 DESIGNED BY: JME

DATE: 12/2005
 REVISION: MISC. REVISIONS
 ROAD NAME REVISION: 10/2006
 RECONFIGURE: 11/2008

DATE: 12/2009
 REVISION: 212/09
 SEAL: [Signature]

SUBDIVISION PLAT
 PHASE TWO
HERITAGE SHORES
 THE TOWN OF BRIDGEVILLE
 NORTHWEST COR. HUNDRED
 SUSSEX CO. DELAWARE
 PREPARED FOR ROBERT D. RAUCH AND ASSOCIATES

LAND PLANNING & SURVEYING
 ENVIRONMENTAL SCIENCES
 207 NORTH LIBERTY STREET
 CENTREVILLE, MARYLAND
 (410) 758-2237
 ANNAPOLIS-CENTREVILLE-ELTON-SALISBURY-DOVER

SHEET NO. 5 OF 7
 CADD FILE 02030PH2SUR5



SEE SHEET 3 OF 7

OPEN SPACE "K2"
PLAT REF: 122/163

PHASE 1
PLAT REF: 84/180 88/6

SEE SHEET 3 OF 7

SEE SHEET 3 OF 7

AREA TABLE

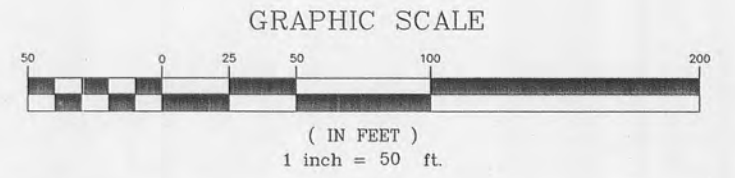
LDT	AREA	LDT	AREA
361	5,198 SQ. FT. ±	400	5,472 SQ. FT. ±
362	3,300 SQ. FT. ±	401	5,335 SQ. FT. ±
363	5,473 SQ. FT. ±	402	3,300 SQ. FT. ±
364	5,582 SQ. FT. ±	403	5,335 SQ. FT. ±
365	3,300 SQ. FT. ±	404	5,473 SQ. FT. ±
366	5,583 SQ. FT. ±	405	5,197 SQ. FT. ±
367	5,583 SQ. FT. ±	406	5,587 SQ. FT. ±
368	3,300 SQ. FT. ±	407	6,558 SQ. FT. ±
369	5,583 SQ. FT. ±	408	6,558 SQ. FT. ±
370	5,335 SQ. FT. ±	409	5,587 SQ. FT. ±
371	3,300 SQ. FT. ±	410	5,601 SQ. FT. ±
372	5,335 SQ. FT. ±	411	6,602 SQ. FT. ±
373	5,583 SQ. FT. ±	412	6,689 SQ. FT. ±
374	3,300 SQ. FT. ±	413	6,865 SQ. FT. ±
375	5,583 SQ. FT. ±	414	7,077 SQ. FT. ±
376	5,583 SQ. FT. ±	415	3,305 SQ. FT. ±
377	3,300 SQ. FT. ±	416	7,077 SQ. FT. ±
378	5,583 SQ. FT. ±	417	7,077 SQ. FT. ±
379	5,402 SQ. FT. ±	418	3,305 SQ. FT. ±
380	3,268 SQ. FT. ±	419	7,728 SQ. FT. ±
381	5,458 SQ. FT. ±	420	7,008 SQ. FT. ±
382	5,476 SQ. FT. ±	421	5,830 SQ. FT. ±
383	3,259 SQ. FT. ±	422	5,462 SQ. FT. ±
384	5,476 SQ. FT. ±	423	5,722 SQ. FT. ±
385	5,482 SQ. FT. ±	424	5,579 SQ. FT. ±
386	3,256 SQ. FT. ±	425	5,578 SQ. FT. ±
387	5,968 SQ. FT. ±	426	5,496 SQ. FT. ±
388	6,105 SQ. FT. ±	427	6,015 SQ. FT. ±
389	3,275 SQ. FT. ±	428	6,032 SQ. FT. ±
390	5,127 SQ. FT. ±	429	5,417 SQ. FT. ±
391	5,198 SQ. FT. ±	430	5,750 SQ. FT. ±
392	3,300 SQ. FT. ±	431	5,750 SQ. FT. ±
393	5,473 SQ. FT. ±	432	5,750 SQ. FT. ±
394	5,473 SQ. FT. ±	433	5,750 SQ. FT. ±
395	5,197 SQ. FT. ±		
396	5,516 SQ. FT. ±		
397	3,305 SQ. FT. ±		
398	5,516 SQ. FT. ±		
399	5,198 SQ. FT. ±		

CURVE TABLE

CURVE	CHORD BEARING	CHORD LENGTH	RADIUS	ARC LENGTH
C212	S 09°30'23" W	7.98'	1525.00'	7.98'
C213	S 10°22'12" W	30.00'	1525.00'	30.00'
C214	S 11°50'01" W	47.92'	1525.00'	47.92'
C215	S 13°30'01" W	47.90'	1525.00'	47.90'
C216	S 15°05'40" W	30.00'	1525.00'	30.00'
C217	S 16°33'38" W	47.90'	1525.00'	47.90'
C218	S 18°21'36" W	47.89'	1525.00'	47.89'
C219	S 19°49'23" W	30.00'	1525.00'	30.00'
C220	S 21°22'14" W	52.37'	1525.00'	52.37'
C221	S 23°22'04" W	53.96'	1525.00'	53.96'
C222	S 24°56'42" W	30.00'	1525.00'	30.00'
C223	N 25°42'58" E	11.04'	1525.00'	11.04'
C224	N 24°51'42" E	36.14'	975.00'	36.14'
C225	S 22°33'46" W	42.11'	975.00'	42.11'
C226	N 87°44'50" W	58.26'	234.85'	58.42'
C227	N 78°59'51" E	48.20'	234.85'	48.29'
C228	N 69°19'22" E	30.00'	234.85'	30.02'
C229	N 59°39'53" E	48.20'	234.85'	48.29'
C230	S 52°37'45" W	8.25'	234.85'	8.25'
C231	S 39°02'41" W	2.34'	234.85'	2.34'
C232	N 32°38'24" E	50.07'	234.85'	50.16'
C233	N 20°44'16" E	47.33'	234.85'	47.41'
C234	N 09°10'17" E	47.33'	234.85'	47.41'
C235	N 02°23'41" W	47.33'	234.85'	47.41'
C236	N 13°51'35" W	46.50'	234.85'	46.58'
C237	N 23°12'13" W	30.00'	234.85'	30.02'

CURVE TABLE

CURVE	CHORD BEARING	CHORD LENGTH	RADIUS	ARC LENGTH
C238	N 32°32'51" W	46.50'	234.85'	46.58'
C239	N 43°54'40" W	46.50'	234.85'	46.58'
C240	N 53°58'18" W	30.00'	234.85'	30.02'
C241	N 63°09'22" W	51.00'	234.85'	51.18'
C242	N 74°55'46" W	45.42'	234.85'	45.49'
C243	N 09°37'44" E	6.29'	1475.00'	6.29'
C244	N 10°45'09" E	51.57'	1475.00'	51.57'
C245	N 12°47'54" E	53.78'	1475.00'	53.78'
C246	N 14°51'30" E	52.42'	1475.00'	52.42'
C247	N 16°53'48" E	52.41'	1475.00'	52.41'
C248	N 18°55'03" E	51.63'	1475.00'	51.63'
C249	N 21°01'03" E	56.49'	1475.00'	56.49'
C250	N 23°12'55" E	56.68'	1475.00'	56.68'
C251	N 25°07'11" E	41.39'	1475.00'	41.39'
C252	N 25°40'51" E	6.69'	1025.00'	6.69'
C253	N 24°02'22" E	60.03'	1025.00'	60.04'
C254	N 21°14'33" E	50.03'	1025.00'	50.04'
C255	N 18°28'43" E	50.03'	1025.00'	50.04'
C256	N 15°38'54" E	50.03'	1025.00'	50.04'
C257	S 51°19'10" W	180.21'	184.85'	188.24'
C258	S 14°07'34" E	51.58'	184.85'	51.74'
C259	S 01°42'00" W	50.22'	184.85'	50.37'
C260	S 17°18'47" W	50.22'	184.85'	50.37'
C261	S 33°08'21" W	51.58'	184.85'	51.74'
C262	S 70°19'57" W	180.21'	184.85'	188.24'

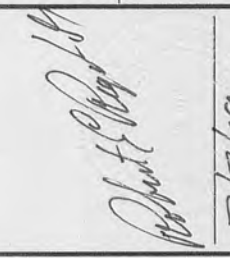


OPEN SPACE AREA TABLE

OPEN SPACE I	7,985 SQ. FT. ±
OPEN SPACE J	7,985 SQ. FT. ±
OPEN SPACE K2	72,711 SQ. FT. ±

STANDARD BUILDING RESTRICTION LINES (BRL):
FRONT: 10'
REAR: 15'
SIDE: 3'

THIS PLAT SUPERCEDES PLATS ENTITLED "SUBDIVISION PLAT, PHASE TWO, HERITAGE SHORES" FILED FOR RECORD IN THE OFFICE OF RECORDER OF DEEDS IN PLOT VOLUME 103, PAGES 212 TO 218 INSOFAR AS THE LOTS 262-286 HAVE BEEN RECONFIGURED.


 SEAL
 DATE: 7/21/09

McCRONE

ENGINEERING & SURVEYING
 ENVIRONMENTAL SCIENCES
 LAND PLANNING & SURVEYING
 CONSTRUCTION SERVICES

207 NORTH LIBERTY STREET
 SUITE 100
 CENTRE FORK, HUNTERDON COUNTY, NC 28705
 (410) 758-2237

ANNAPOLIS-CENTREVILLE-ELKTON-SALISBURY-DOVER

DATE	SCALE	DESIGNED BY	APPROVED BY
AUGUST 2005	1" = 50'	WME	
JOB NO. 01020030			
FOLDER REF			
DATE	REVISION	RECONFIGURED	RECONFIGURE
12/2005	MISC. REVISIONS	ROAD NAME REVISION	
10/2006			
11/2008		LOIS 262-286	

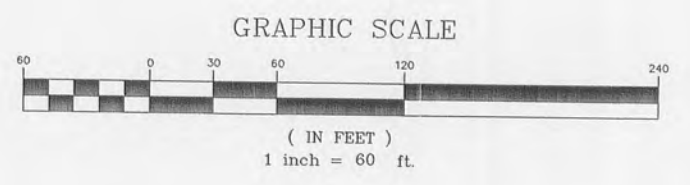
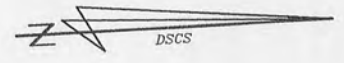
HERITAGE SHORES

PHASE TWO

THE TOWN OF BRIDGEVILLE
 NORTHWEST FORK HUNDRED
 SUSSEX CO. DELAWARE

PREPARED FOR: ROBERT D. RAUCH AND ASSOCIATES

SHEET NO. — 6 OF 7
 CADD FILE — 02030PH2SUR6



AREA TABLE

Lot	AREA (S.F.)	Lot	AREA (S.F.)
434	5,644 SQ. FT. ±	466	6,333 SQ. FT. ±
435	6,137 SQ. FT. ±	467	5,049 SQ. FT. ±
436	5,995 SQ. FT. ±	468	3,942 SQ. FT. ±
437	5,536 SQ. FT. ±	469	5,159 SQ. FT. ±
438	5,517 SQ. FT. ±	470	5,307 SQ. FT. ±
439	6,025 SQ. FT. ±	471	3,865 SQ. FT. ±
440	5,918 SQ. FT. ±	472	5,307 SQ. FT. ±
441	5,444 SQ. FT. ±	473	5,312 SQ. FT. ±
442	5,516 SQ. FT. ±	474	3,859 SQ. FT. ±
443	5,939 SQ. FT. ±	475	5,724 SQ. FT. ±
444	6,134 SQ. FT. ±	476	5,500 SQ. FT. ±
445	5,517 SQ. FT. ±	477	3,960 SQ. FT. ±
446	5,518 SQ. FT. ±	478	5,005 SQ. FT. ±
447	5,518 SQ. FT. ±	479	5,084 SQ. FT. ±
448	5,531 SQ. FT. ±	480	3,924 SQ. FT. ±
449	5,411 SQ. FT. ±	481	5,145 SQ. FT. ±
450	5,335 SQ. FT. ±	482	5,173 SQ. FT. ±
451	5,335 SQ. FT. ±	483	3,911 SQ. FT. ±
452	5,348 SQ. FT. ±	484	5,173 SQ. FT. ±
453	5,614 SQ. FT. ±	485	5,179 SQ. FT. ±
454	5,707 SQ. FT. ±	486	3,907 SQ. FT. ±
455	5,707 SQ. FT. ±	487	5,667 SQ. FT. ±
456	5,707 SQ. FT. ±	488	5,622 SQ. FT. ±
457	5,707 SQ. FT. ±	489	3,927 SQ. FT. ±
458	5,004 SQ. FT. ±	490	4,722 SQ. FT. ±
459	3,943 SQ. FT. ±	491	5,259 SQ. FT. ±
460	5,252 SQ. FT. ±	492	3,749 SQ. FT. ±
461	5,626 SQ. FT. ±	493	6,090 SQ. FT. ±
462	3,739 SQ. FT. ±	494	6,130 SQ. FT. ±
463	5,165 SQ. FT. ±	495	3,746 SQ. FT. ±
464	5,421 SQ. FT. ±	496	5,399 SQ. FT. ±
465	4,202 SQ. FT. ±		

CURVE TABLE

CURVE	CHORD BEARING	CHORD LENGTH	RADIUS	ARC LENGTH
C263	N 12°30'36" E	48.13'	1025.00'	49.13'
C264	N 10°02'55" E	53.44'	1025.00'	53.44'
C265	N 07°03'27" E	52.18'	1025.00'	52.18'
C266	N 04°14'52" E	48.35'	1025.00'	48.35'
C267	N 01°33'14" E	48.02'	1025.00'	48.02'
C268	N 01°19'23" W	52.55'	1025.00'	52.55'
C269	N 04°09'51" W	51.50'	1025.00'	51.50'
C270	N 08°23'57" W	26.08'	1451.57'	26.08'
C271	N 08°18'29" W	23.38'	1025.00'	23.38'
C272	N 04°53'27" W	51.82'	1476.00'	51.82'
C273	N 02°46'03" W	55.78'	1476.00'	55.78'
C274	N 02°38'56" W	52.60'	1476.00'	52.60'
C275	N 01°31'35" E	51.82'	1476.00'	51.82'
C276	N 03°32'23" E	51.85'	1476.00'	51.85'
C277	N 05°33'14" E	51.85'	1476.00'	51.85'
C278	N 07°44'15" E	52.60'	1476.00'	52.60'
C279	N 09°02'37" E	23.83'	1476.00'	23.83'
C280	N 11°08'57" E	44.43'	775.00'	44.43'
C281	N 14°20'12" E	55.31'	775.00'	55.31'
C282	N 18°50'35" E	55.31'	775.00'	55.31'
C283	N 23°00'59" E	55.31'	775.00'	55.31'
C284	N 27°08'21" E	55.31'	775.00'	55.31'
C285	N 29°20'55" E	55.31'	775.00'	55.31'
C286	N 27°41'26" E	19.43'	300.00'	19.43'
C287	N 21°39'24" E	43.71'	300.00'	43.71'
C288	N 14°19'14" E	36.00'	300.00'	36.00'
C289	N 10°03'04" E	5.70'	300.00'	5.70'
C290	S 13°14'27" W	32.66'	250.00'	32.66'
C291	S 23°16'39" W	54.74'	250.00'	54.74'
C292	S 28°12'20" W	36.62'	825.00'	36.62'
C293	S 25°18'31" W	44.79'	825.00'	44.79'
C294	S 22°30'11" W	36.00'	825.00'	36.00'
C295	S 19°41'50" W	44.79'	825.00'	44.79'
C296	S 16°35'17" W	44.74'	825.00'	44.74'
C297	S 13°47'02" W	36.00'	825.00'	36.00'
C298	S 11°01'13" W	43.59'	825.00'	43.59'
C299	S 09°29'34" W	1.61'	1525.00'	1.61'
C300	S 08°46'11" W	36.00'	1525.00'	36.00'
C301	S 07°14'49" W	45.05'	1525.00'	45.05'
C302	S 05°33'12" W	45.10'	1525.00'	45.10'
C303	S 04°01'47" W	36.00'	1525.00'	36.00'
C304	S 02°30'22" W	45.10'	1525.00'	45.10'
C305	S 00°48'42" W	45.09'	1525.00'	45.09'
C306	S 00°42'42" E	36.00'	1525.00'	36.00'
C307	S 02°18'10" E	49.59'	1525.00'	49.59'
C308	S 04°07'48" E	48.44'	1525.00'	48.44'
C309	S 05°47'07" E	36.00'	1525.00'	36.00'
C310	S 05°59'57" E	31.30'	975.00'	31.30'
C311	S 06°41'10" E	11.85'	1525.00'	11.85'
C312	S 03°41'51" E	48.93'	975.00'	48.93'
C313	N 54°48'58" E	78.12'	92.00'	81.79'
C314	N 28°00'15" E	18.43'	425.00'	18.43'
C315	S 23°50'48" W	42.22'	425.00'	42.22'
C316	S 18°54'20" W	38.00'	425.00'	38.00'
C317	S 12°49'52" W	49.22'	425.00'	49.22'
C318	S 06°09'46" W	49.57'	425.00'	49.57'
C319	S 00°23'59" W	36.00'	425.00'	36.00'
C320	S 04°54'22" E	42.57'	425.00'	42.57'
C321	N 09°30'22" E	298.27'	975.00'	298.27'
C322	S 30°17'10" E	28.71'	42.00'	28.30'
C323	S 09°30'22" W	254.15'	375.00'	258.29'
C324	S 49°17'54" W	28.71'	42.00'	28.30'

OPEN SPACE AREA TABLE

OPEN SPACE H	11,238 SQ. FT. ±
OPEN SPACE K1	251,954 SQ. FT. ±

STANDARD BUILDING RESTRICTION LINES (BRL):
FRONT: 10'
REAR: 15'
SIDE: 3'

THIS PLAT SUPERCEDES PLATS ENTITLED "SUBDIVISION PLAT, PHASE TWO, HERITAGE SHORES" FILED FOR RECORD IN THE OFFICE OF RECORDER OF DEEDS IN PLOT VOLUME 103, PAGES 212 TO 218 INSOFAR AS THE LOTS 262-266 HAVE BEEN RECONFIGURED.

DATE: 11/2008
SCALE: AS SHOWN

McCRONE
ENGINEERING & SURVEYING
LAND PLANNING & SURVEYING & CONSTRUCTION SERVICES
207 NORTH LIBERTY STREET
SUITE 100
CENTREVILLE, MARYLAND
(410) 758-2237
ANNAPOLIS-CENTREVILLE-DURTON-SALISBURY-DOVER

DATE	SCALE	BY	APPROVED BY
AUGUST 2005	1" = 60'	SWANBY	
JULY 2003	N/A	DESIGNED BY	
10/2006	N/A	REVISION	
11/2008	N/A	RECONFIGURE	

HERITAGE SHORES
THE TOWN OF BRIDGEVILLE
NORTHWEST FORK HUNDRED
SUSSEX CO. DELAWARE
PREPARED FOR ROBERT D. RAUCH AND ASSOCIATES