

TABLE OF ADJACENTS

Number	Address/Owner/Project
1	1-31-10-10-000
2	1-31-10-10-000
3	1-31-10-10-000
4	1-31-10-10-000
5	1-31-10-10-000
6	1-31-10-10-000
7	1-31-10-10-000
8	1-31-10-10-000
9	1-31-10-10-000
10	1-31-10-10-000
11	1-31-10-10-000
12	1-31-10-10-000
13	1-31-10-10-000
14	1-31-10-10-000
15	1-31-10-10-000
16	1-31-10-10-000
17	1-31-10-10-000
18	1-31-10-10-000
19	1-31-10-10-000
20	1-31-10-10-000
21	1-31-10-10-000
22	1-31-10-10-000
23	1-31-10-10-000
24	1-31-10-10-000
25	1-31-10-10-000
26	1-31-10-10-000
27	1-31-10-10-000
28	1-31-10-10-000
29	1-31-10-10-000
30	1-31-10-10-000
31	1-31-10-10-000
32	1-31-10-10-000

NOTES:
 1. SOLE PURPOSE OF THIS PLAN IS TO IDENTIFY A PORTION OF THOSE LANDS CONVEYED TO PASSWATERS FARM, LLC BY DEED DATED MARCH 18, 2004 AND RECORDED AMONG THE LAND RECORDS OF SUSSEX COUNTY, DELAWARE IN LIBER 2959, FOLIO 003.
 2. THIS PLAN WAS PREPARED WITHOUT THE BENEFIT OF REVIEW OF AN ABSTRACT OF TITLE.

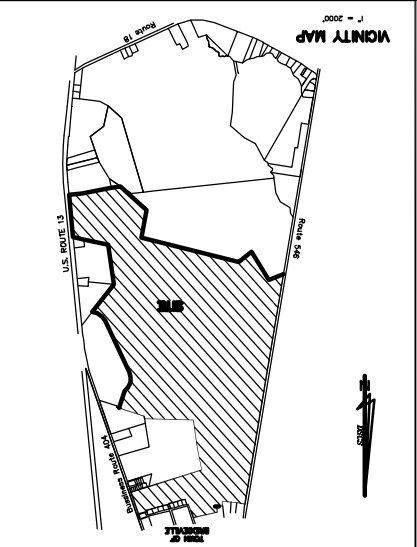
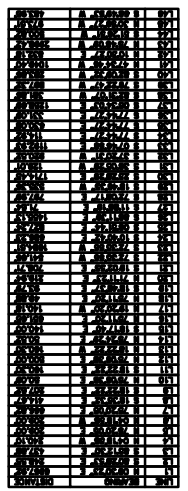
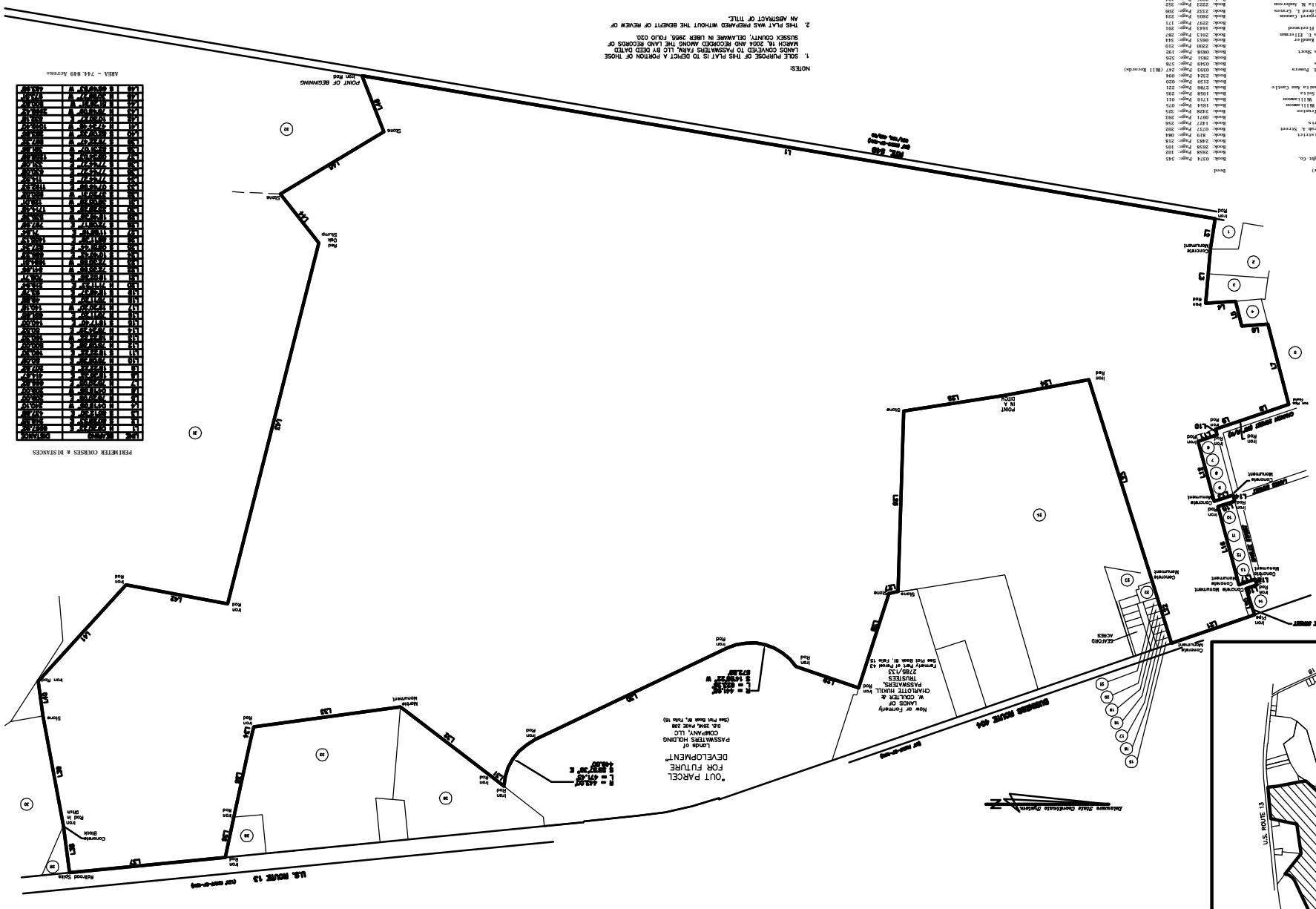


CHART B
 SHEET NO. 1
 CAD FILE - CHART B

THE LANDS OF
PASSWATER FARMS, LLC
 THE TOWN OF BRIDGEVILLE
 NORTHWEST FORK HUNDRED
 SUSSEX CO. DELAWARE
 PREPARED FOR ROBERT D. RAUCH AND ASSOCIATES

DATE	SCALE	TESTE
01/20/2006	1" = 400'	BRUNNEN BT
01/20/2006	1" = 400'	DESIGNED BT
		APPROVED BT

LAND PLANNING & SURVEYING & CONSTRUCTION SERVICES
MCGRONE
 ENGINEERING & ENVIRONMENTAL SCIENCES
 207 NORTH LIBERTY STREET
 CENTREVILLE, MARYLAND
 (410) 759-2230
 ANAPOLIS-CENTREVILLE-COLUMBIA-SALISBURY-COOPER

DATE: _____ SEAL: _____