



Delaware Department of Transportation Regional Systems Planning

December 2021



Excellence in Transportation.

Every Trip.

We strive to make every trip taken in Delaware safe, reliable and convenient for people and commerce.

Every Mode.

We provide safe choices for travelers in Delaware to access roads, rails, buses, airways, waterways, bike trails, and walking paths.

Every Dollar.

We seek the best value for every dollar spent for the benefit of all.

Everyone.

We engage our customers and employees with respect and courtesy as we deliver our services.



Agenda

Draft FY23 - FY28 Capital
Transportation Plan Update

Current Sussex County Planning
Studies

Statewide Transportation Planning

Q&A



Capital Transportation Program (CTP)

CTP Home



CTP Reports

- Current CTP
- Previous Reports

Planning Partners

- WILMAPCO
- Dover/Kent MPO
- Salisbury/Wicomico MPO
- Sussex County
- Draft-2021 Consultation Process Update

Resources

- CTP Development Process
- CTP Brochure | Spanish
- DelDOT Enhanced Project Prioritization Criteria Summary
- DelDOT Enhanced Project Prioritization Criteria

Capital Transportation Program Meetings

New Castle County

Council On Transportation Meeting - 9 /15/2021

Kent County

Council On Transportation Meeting - 9/23/2021

Sussex County

Council On Transportation Meeting - 9 /29/2021

View The flyer

CTP Project map and Public Comment.

Development:

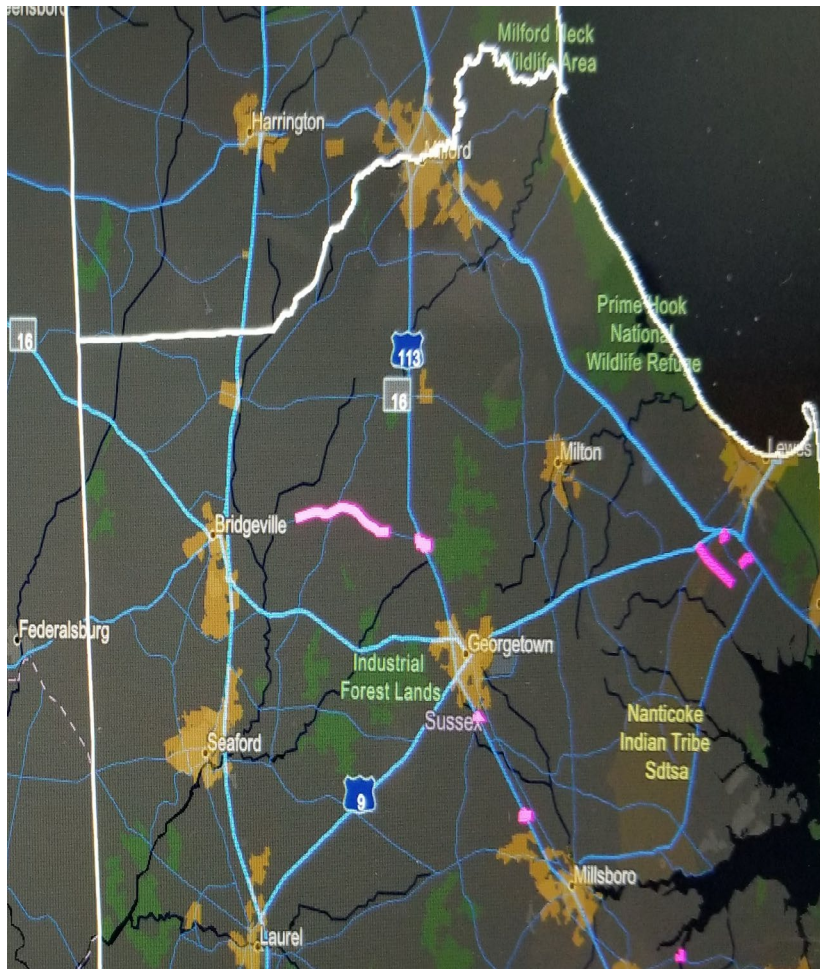
Every two years the Department of Transportation develops a 6-year Capital Transportation Program (CTP) that identifies anticipated capital investments. This program is developed in cooperation with the Wilmington Area Planning Council (WILMAPCO), Dover/Kent County Metropolitan Planning Organization, Salisbury-Wicomico Metropolitan Planning Organization, and Sussex County. The program provides information on various DelDOT capital and maintenance programs and on the estimated cost expenditures for the project phasing of a capital project that are anticipated in each specific fiscal year. The following documents provide a brief overview of the process and specific information about DelDOT's prioritization criteria.

Updated CTP Website with Meeting Videos

ctp.deldot.gov



New Interactive CTP ArcGIS website and Map



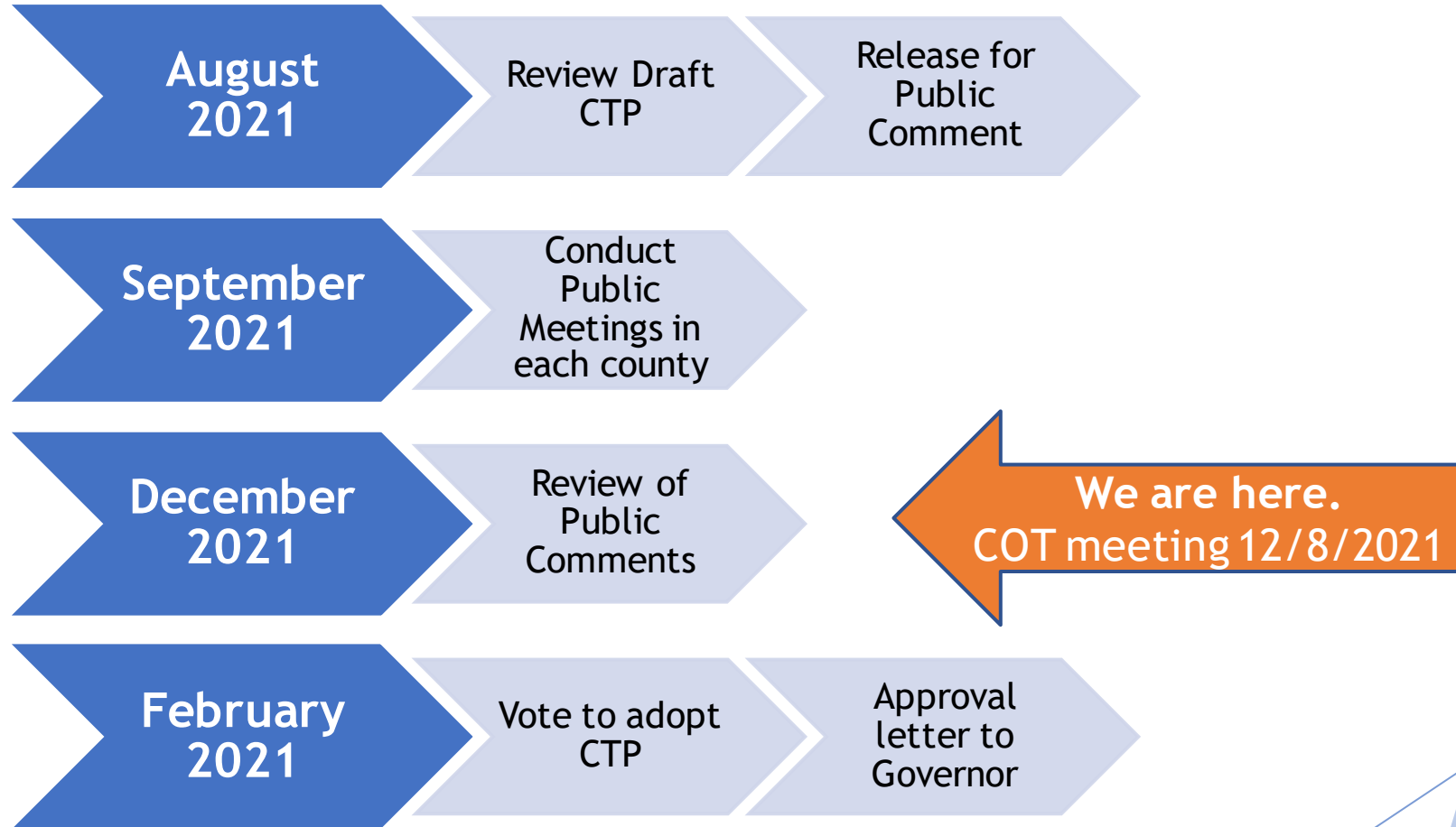
Developed to assist the public with:

- Review of draft CTP projects
- Comment on specific projects -
Comment Period closed
- Connect with DelDOT staff
- Understanding the CTP and the process

<https://project-site-deldot.hub.arcgis.com/>

Capital Transportation Program - CTP

Council on Transportation (COT) Timeline



CTP Process occurs in even Fiscal Years - Currently FY22



Sussex County Active Planning Studies

Coastal Corridors Study

Five Points Transportation Study - Lewes

Mulberry Knoll Extension PEL Study

Southeast Sussex Study

Sussex Long Range Transportation Plan

Coastal Corridors Study

Includes 404, SR 16 and routes in between from MD-DE line west to SR 1



- Data collection began in 2019
- Studying east-west travel patterns in Sussex County
- Added data collection tools around the Maryland/Delaware State Line on the west side of the county
- Held listening sessions with residents, local business owners and elected officials
- Conducted five public workshops across the study area
- Analyzing current traffic volumes and preparing forecast of future volumes
- Will be back out to the public early 2022

CoastalCorridors.deldot.gov



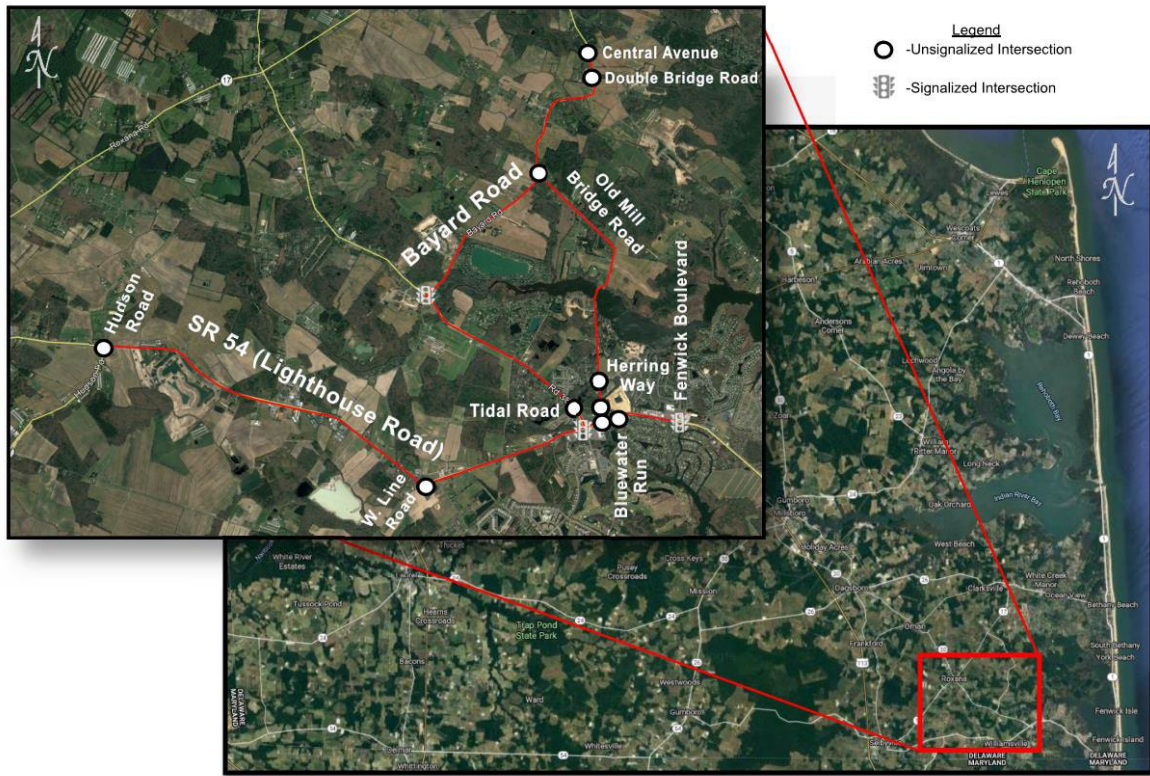
FIVE POINTS

TRANSPORTATION STUDY



- Currently in Phase 2 - Implementation
- Over half (54) of the Working Group's 78 recommendations have been initiated

5Points.deledot.gov



SOUTHEAST SUSSEX STUDY

Southeastsussex.deldot.gov

- Originated with SR 54 Corridor Study will expand to areas north and west of Fenwick Island
- Data collection ongoing
- Public Workshop early 2022

Sussex Long Range Transportation Plan

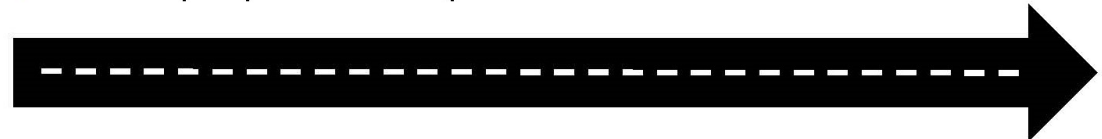
- Federal requirement for a non-metropolitan area.
- Primary transportation component of the Sussex County Comprehensive Plan.
- Developed in partnership between DelDOT and Sussex County.
- Website coming soon



Long Range Transportation Plan 2021

Study Objectives: Move Forward

- **F**acilitate collaboration to achieve “Success for Sussex”
- **O**rganize key trends, challenges and opportunities
- **R**efine key corridor visions
- **W**ork on identifying and prioritizing improvement projects
- **A**pply Integrated land-use and transportation approach
- **R**equest public participation and input
- **D**evelop implementation plan



Additional Statewide Planning Initiatives for 2022

- Upcoming Census data and what that could mean for Delaware
- Official 2022 Freight Plan development has begun
- Develop work plan for University of Delaware's IPA team to assist municipalities with transportation related updates.



The background features a collage of overlapping question marks in various shades of blue and white, set against a backdrop of abstract, angular shapes in blue and orange. The word "QUESTIONS" is centered in a bold, blue, sans-serif font.

QUESTIONS