

GRADING AND DRAINAGE PLAN - OVERVIEW
 BRIDGEVILLE TOWN CENTER
 NORTHWEST FORK HUNDRED
 SUSSEX COUNTY, DELAWARE

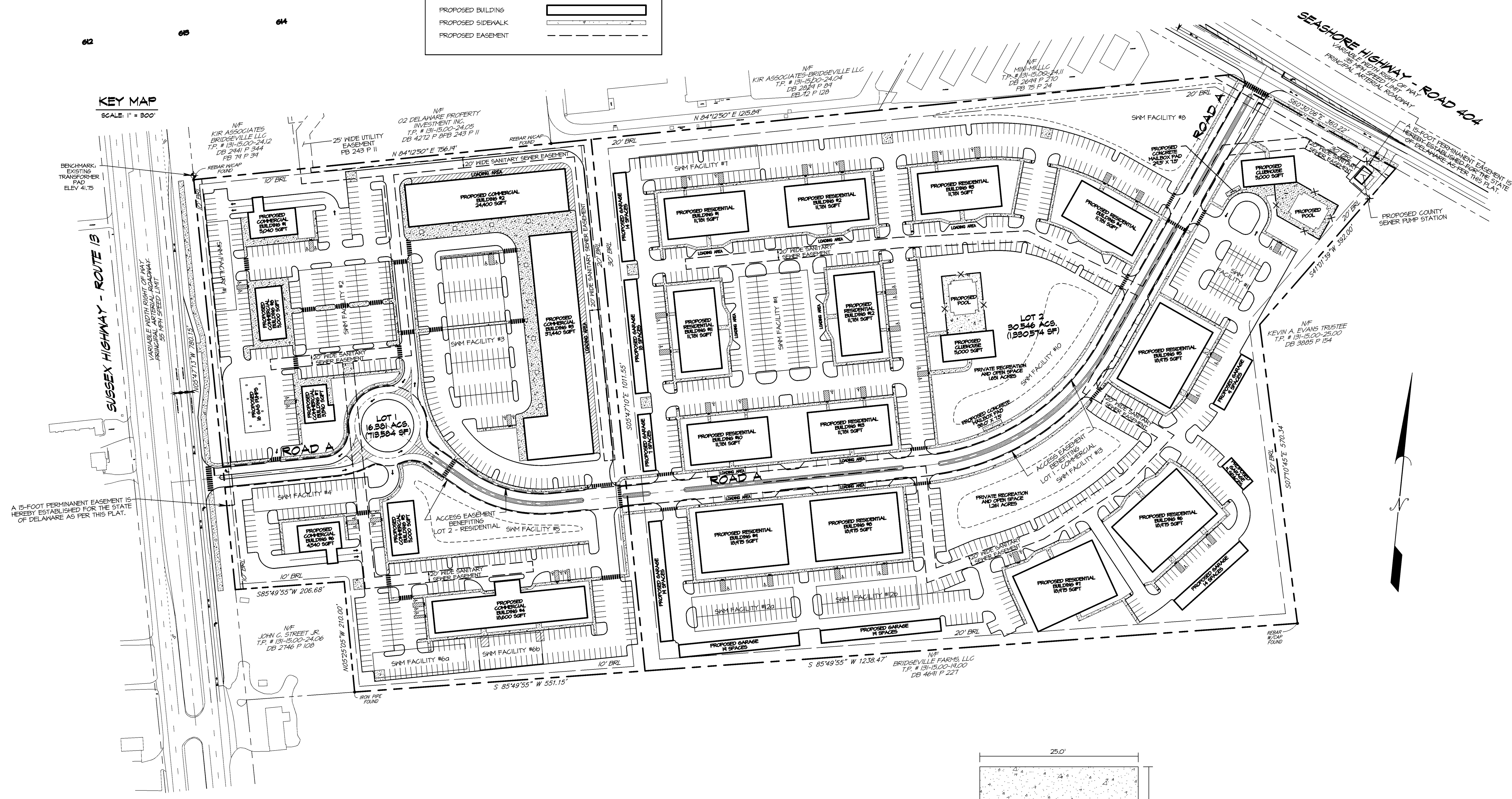
DATE:	REVISION
T-15-22	
DATE:	
DRAWN BY: RTN	
CHECKD. BY: CMK	
PROJ. NO.: 42710	
SCALE: 1" = 100'	
CAD FILE NAME: 42710B.DWG	
DWG. NO.	

G1

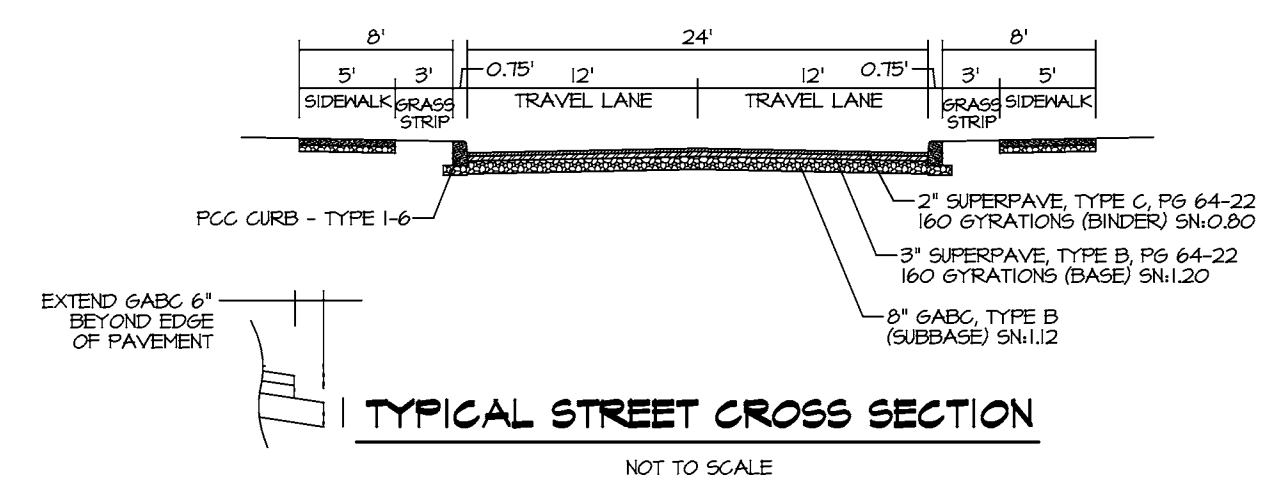
LEGEND

PROPOSED LOT LINE	---
ADJOINING LOT LINE	----
EXISTING RIGHT-OF-WAY	----
EXISTING EASEMENT	----
BUILDING RESTRICTION LINE	----
EXISTING EDGE OF PAVEMENT	----
EXISTING STRIPING	----
EXISTING BUILDING	▭
PROPOSED BUILDING	▭
PROPOSED SIDEWALK	----
PROPOSED EASEMENT	----

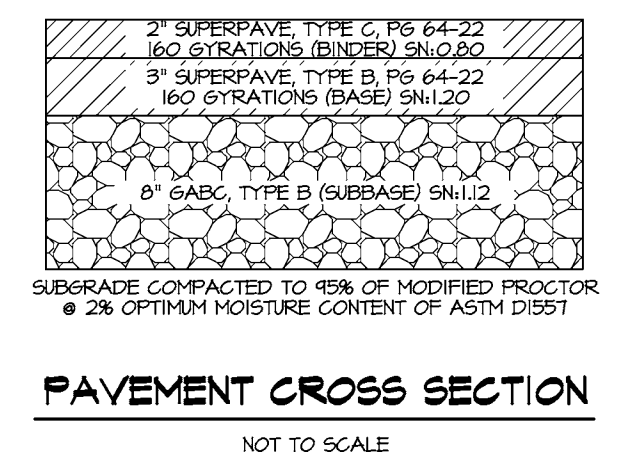
KEY MAP
 SCALE: 1" = 800'



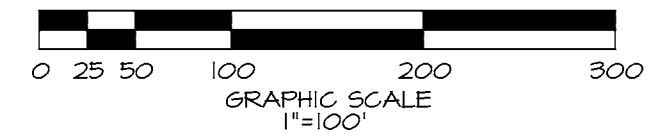
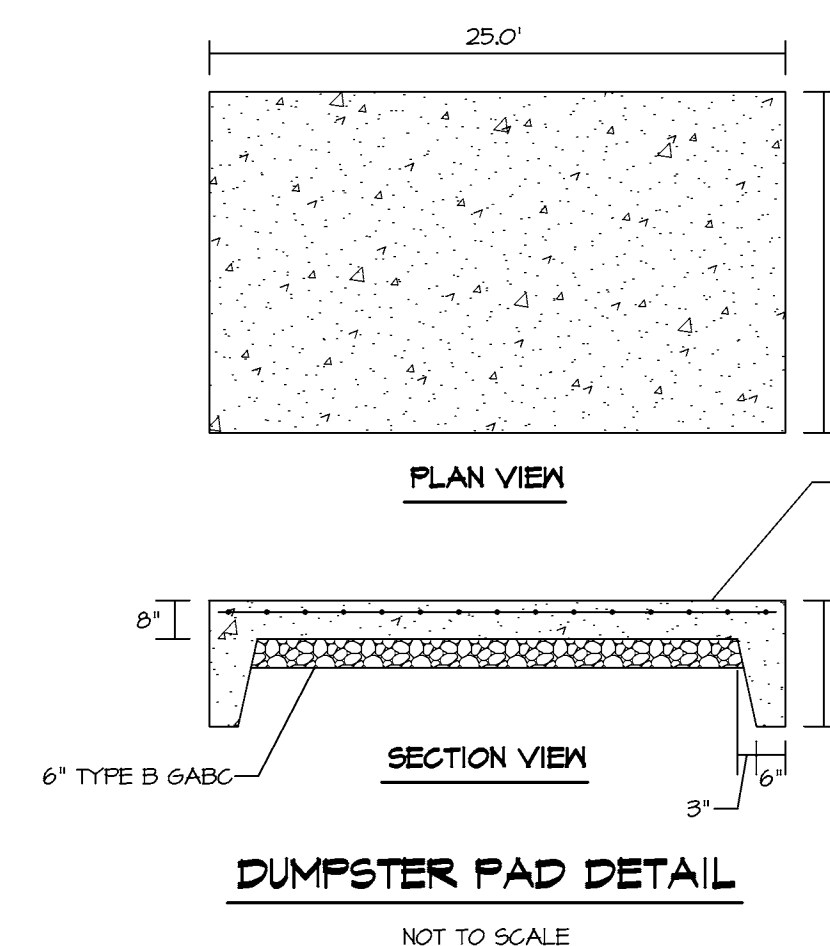
A 15-FOOT PERMANENT EASEMENT IS HEREBY ESTABLISHED FOR THE STATE OF DELAWARE AS PER THIS PLAN.



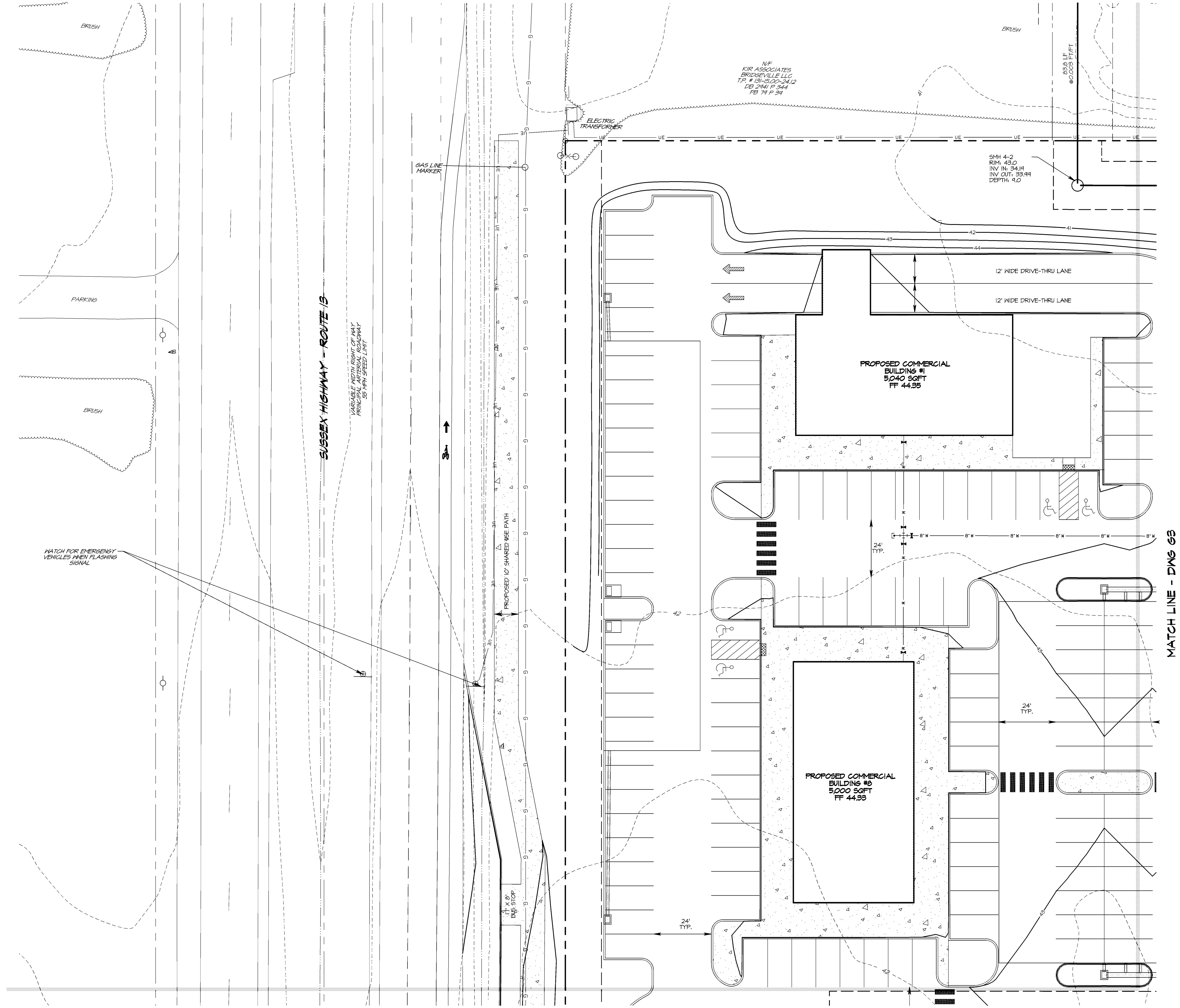
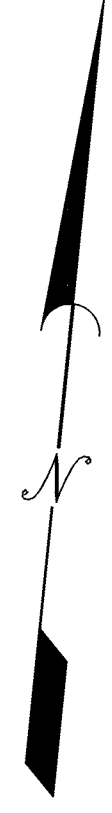
- NOTES:
1. PROVIDE 4" OF TOPSOIL COVERED WITH SEED AND MULCH ON PROPOSED GRASS AREAS.
 2. SUBBASE AND SUBGRADE SHALL BE COMPACTED TO 95% OF ASTM D1557, MODIFIED PROCTOR METHOD.
 3. MINIMUM SN VALUE FOR THE ROADWAY IS 3.06. DESIGN SN VALUE IS 3.12.



- NOTES:
1. PROVIDE 4" OF TOPSOIL COVERED WITH SEED AND MULCH ON PROPOSED GRASS AREAS.
 2. SUBBASE AND SUBGRADE SHALL BE COMPACTED TO 95% OF ASTM D1557, MODIFIED PROCTOR METHOD.
 3. MINIMUM SN VALUE FOR THE ROADWAY IS 3.06. DESIGN SN VALUE IS 3.12.



BEFORE YOU DIG
 ANYWHERE IN **DELAWARE**
 STOP CALL 1-800-282-8555
 OUTSIDE DELAWARE CALL 1-800-441-8355
 REQUIRES 3 WORKING DAYS NOTICE BEFORE YOU EXCAVATE
MISS UTILITY OF DELMARVA



SUSSEX HIGHWAY - ROUTE 13

VARIABLE WIDTH ROADWAY
PRINCIPAL ARTERIAL ROADWAY
55 MPH SPEED LIMIT

MATCH LINE - DWG 67

MATCH LINE - DWG 68



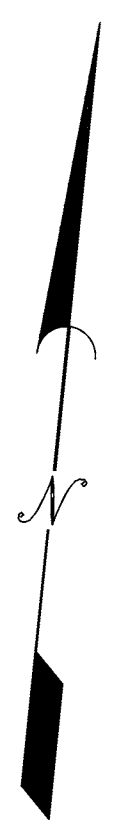
GRADING AND DRAINAGE PLAN
BRIDGEVILLE TOWN CENTER
NORTHWEST FORK HUNDRED
SUSSEX COUNTY, DELAWARE

DATE:	REVISION
T-15-22	
DRAWN BY: RTN	
CHECKD. BY: CMK	
PROJ. NO.: 42T10	
SCALE: 1" = 20'	
CAD. FILE NAME: 42T08D.FRG	

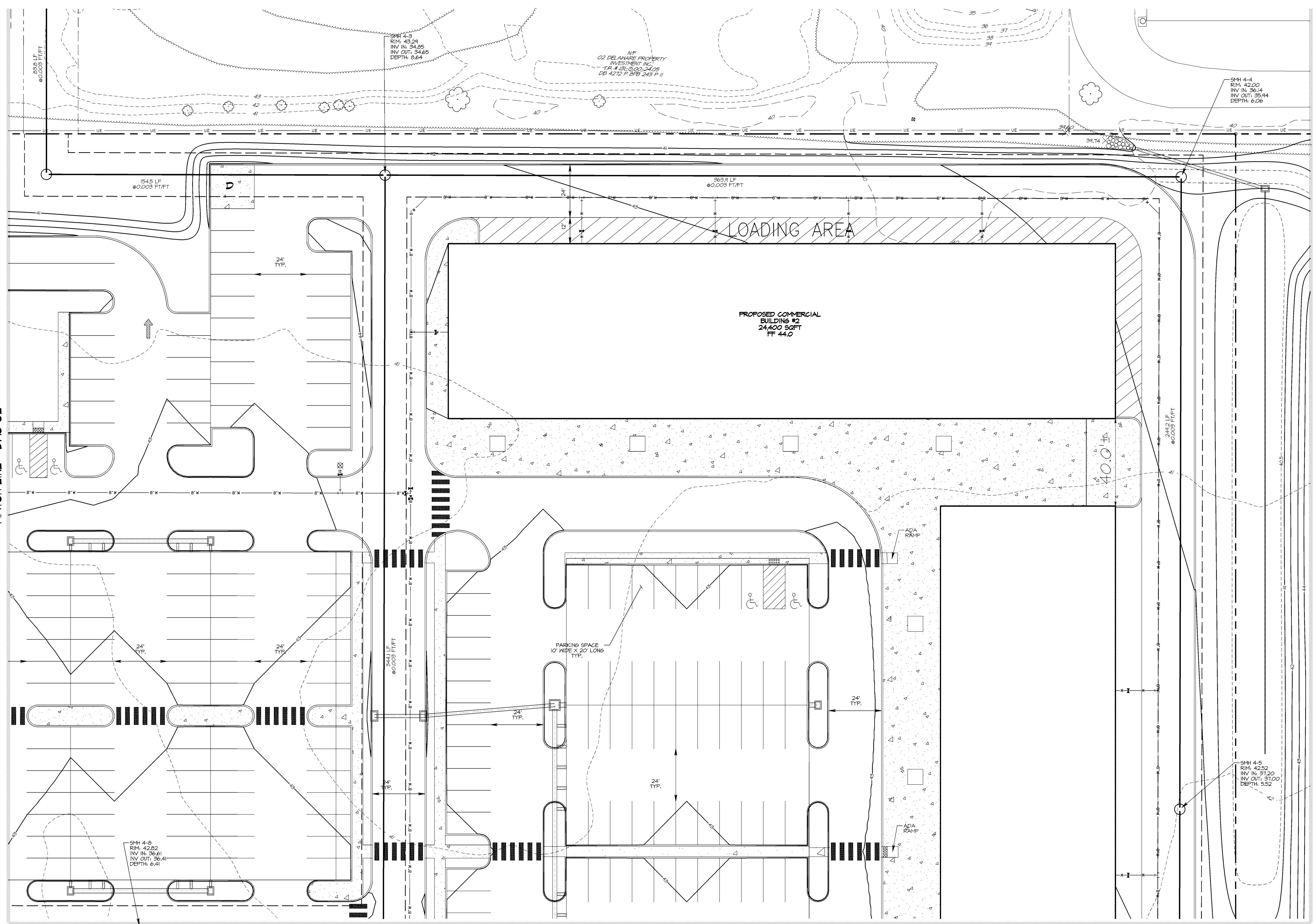
DWG. NO.

G2

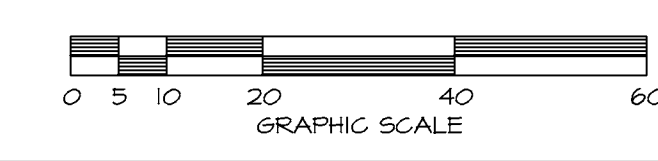
SEAL



MATCH LINE - DWG 62



MATCH LINE - DWG 67 & 68



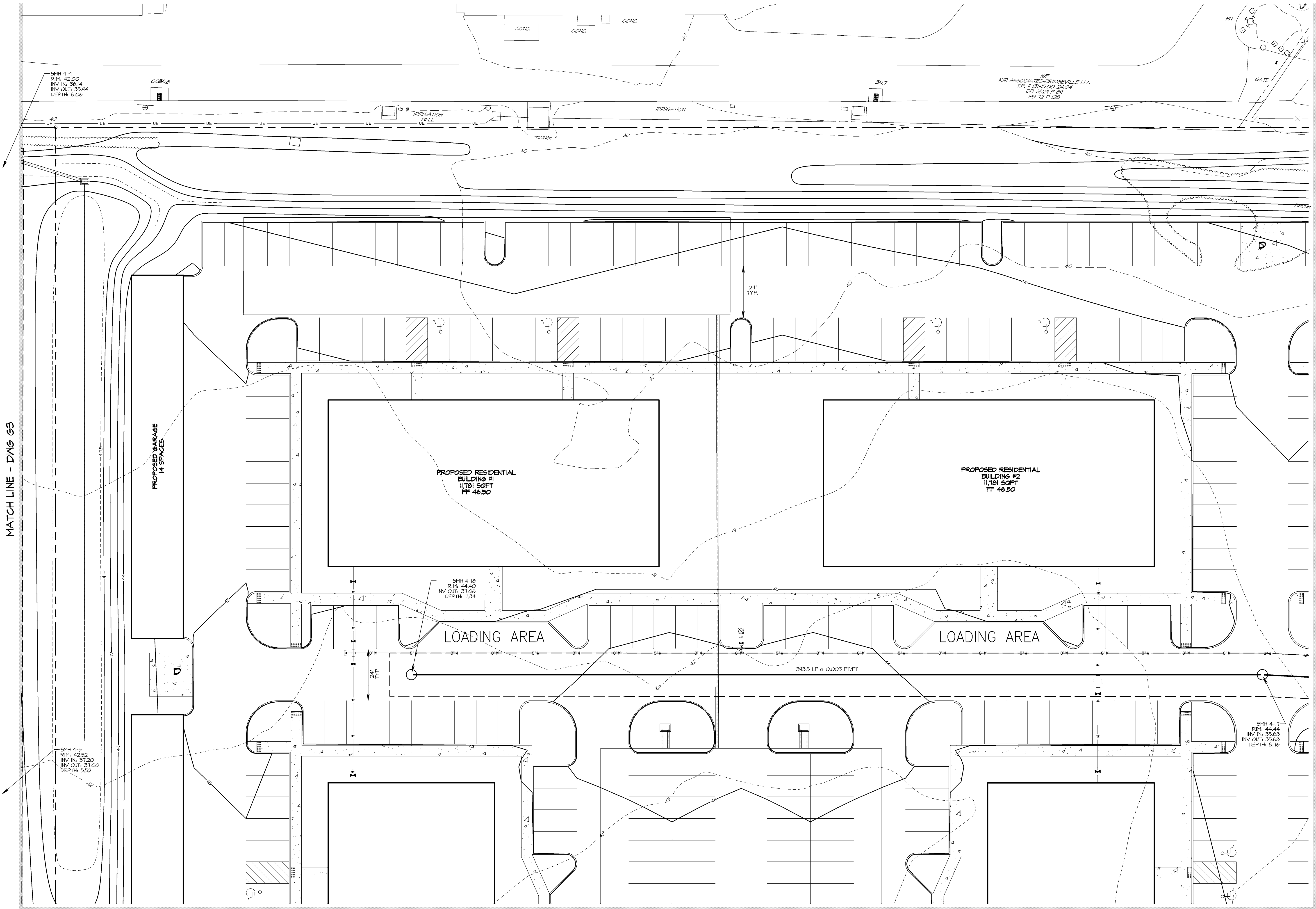
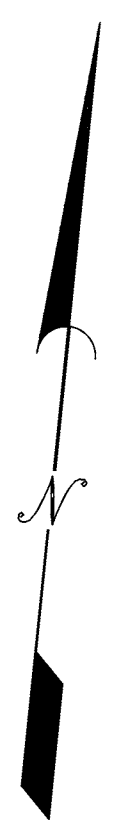
SEAL

GRADING AND DRAINAGE PLAN
 BRIDGEVILLE TOWN CENTER
 NORTHWEST FORK HUNDRED
 SUSSEX COUNTY, DELAWARE

DATE:	REVISION
T-15-22	
DRAWN BY: RTN	
CHECKD. BY: CMK	
PROJ. NO.: 42T10	
SCALE: 1" = 20'	
CAD. FILE NAME: 42T03D.FRD	

DWG. NO.

G3



MATCH LINE - DWG 63

MATCH LINE - DWG 65

MATCH LINE - DWG 68 & 69



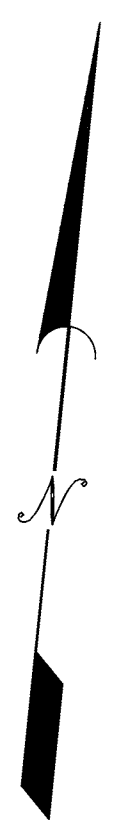
SEAL

GRADING AND DRAINAGE PLAN
BRIDGEVILLE TOWN CENTER
NORTHWEST FORK HUNDRED
SUSSEX COUNTY, DELAWARE

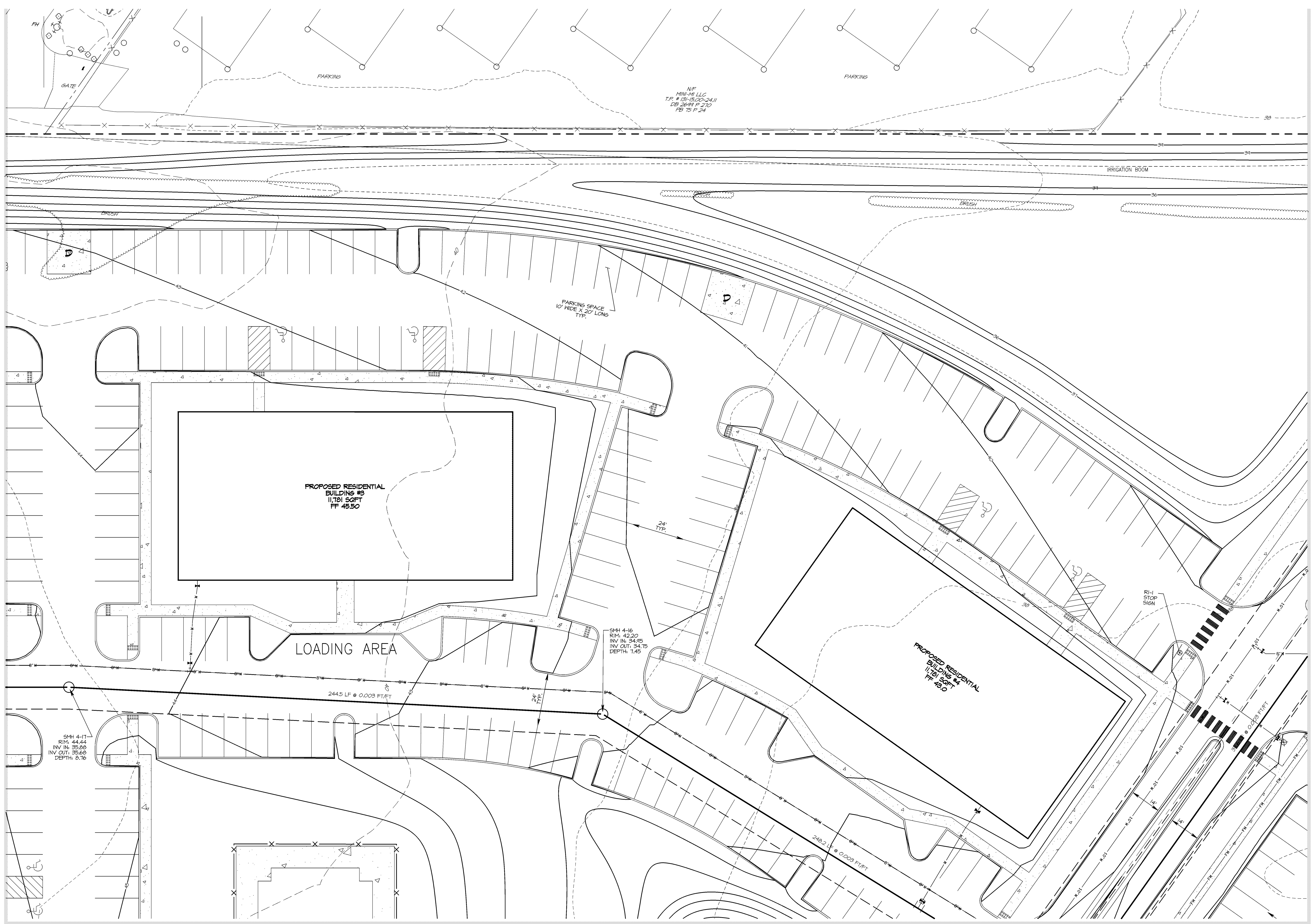
DATE:	REVISION
T-15-22	
DRAWN BY: RTN	
CHECKD. BY: CMK	
PROJ. NO.: 42T10	
SCALE: 1" = 20'	
CAD. FILE NAME: 42T08D.FRG	

DWG. NO.

G4



MATCH LINE - DWG 64



MATCH LINE - DWG 69 & 610

MATCH LINE - DWG 66

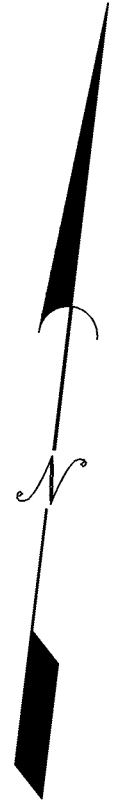
SEAL

GRADING AND DRAINAGE PLAN
BRIDGEVILLE TOWN CENTER
NORTHWEST FORK HUNDRED
SUSSEX COUNTY, DELAWARE

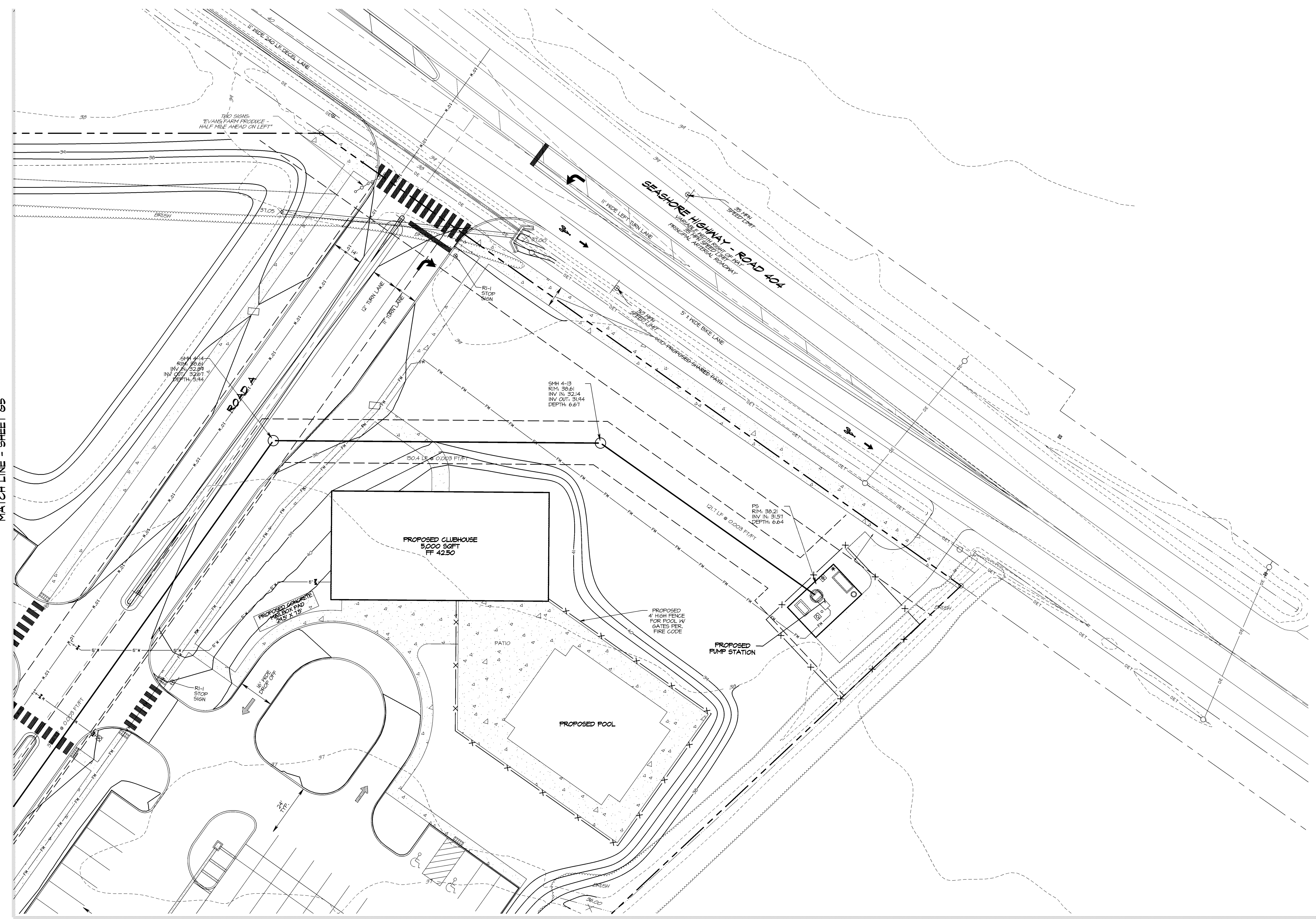
DATE:	REVISION
T-15-22	
DRAWN BY: RTN	
CHECKD. BY: CMK	
PROJ. NO.: 4210	
SCALE: 1" = 20'	
CAD. FILE NAME: 4210B.DWG	

DWG. NO.

G5



MATCH LINE - SHEET G5



MATCH LINE - DWG G10



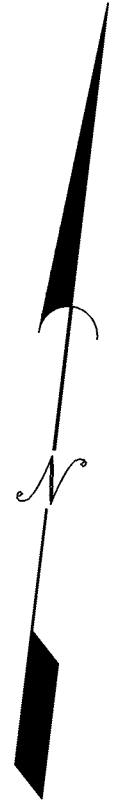
SEAL

GRADING AND DRAINAGE PLAN
BRIDGEVILLE TOWN CENTER
NORTHWEST FORK HUNDRED
SUSSEX COUNTY, DELAWARE

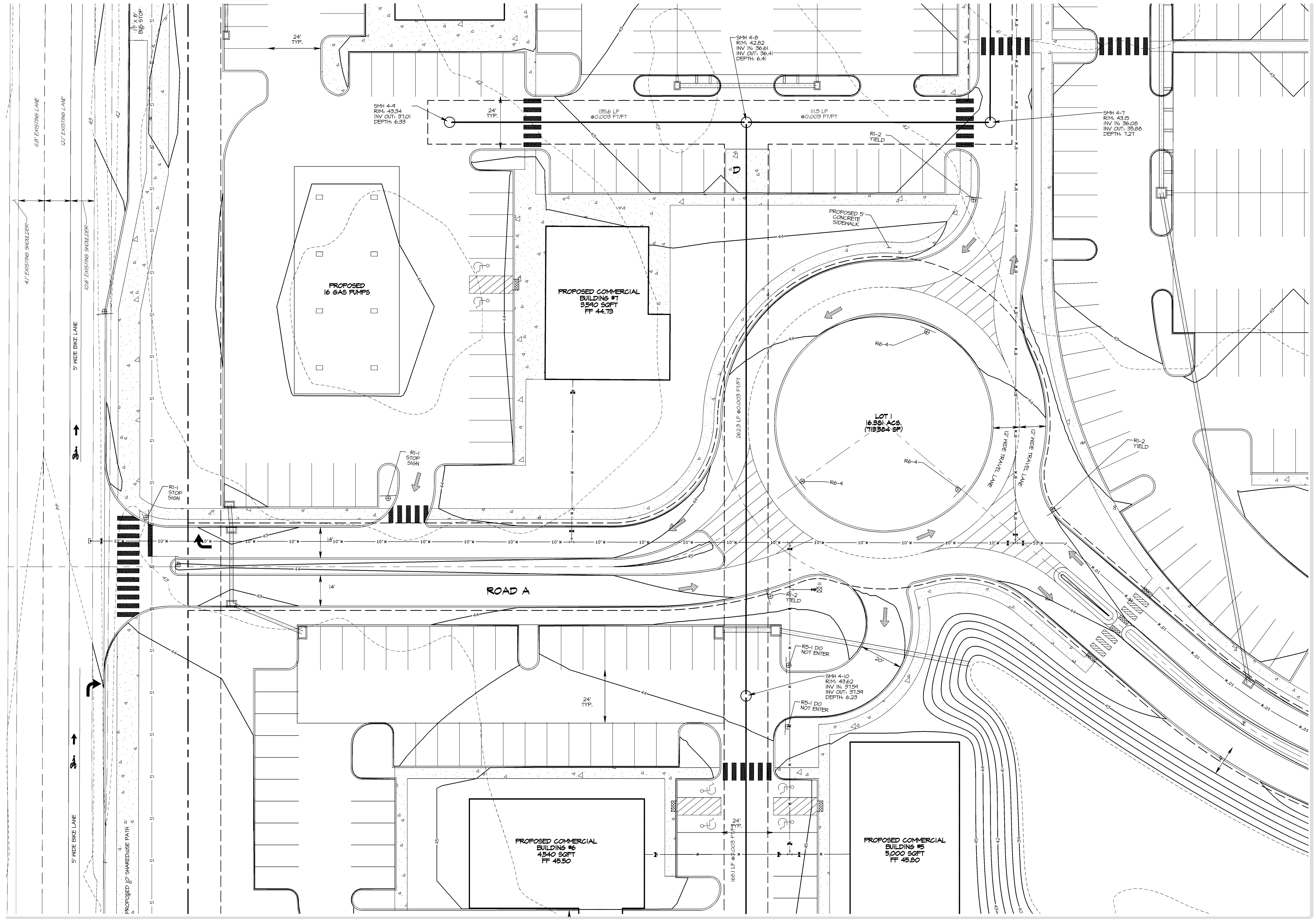
DATE:	REVISION
T-15-22	
DRAWN BY: RTN	
CHECKD. BY: CMK	
PROJ. NO.: 4210	
SCALE: 1" = 20'	
CAD. FILE NAME: 4210BD.FRD	

DWG. NO.

G6



MATCH LINE - DWG G2 & G3



MATCH LINE - DWG G1

MATCH LINE - DWG G9



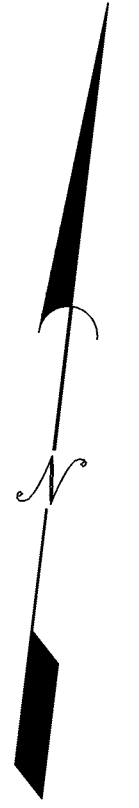
SEAL

GRADING AND DRAINAGE PLAN
 BRIDGEVILLE TOWN CENTER
 NORTHWEST FORK HUNDRED
 SUSSEX COUNTY, DELAWARE

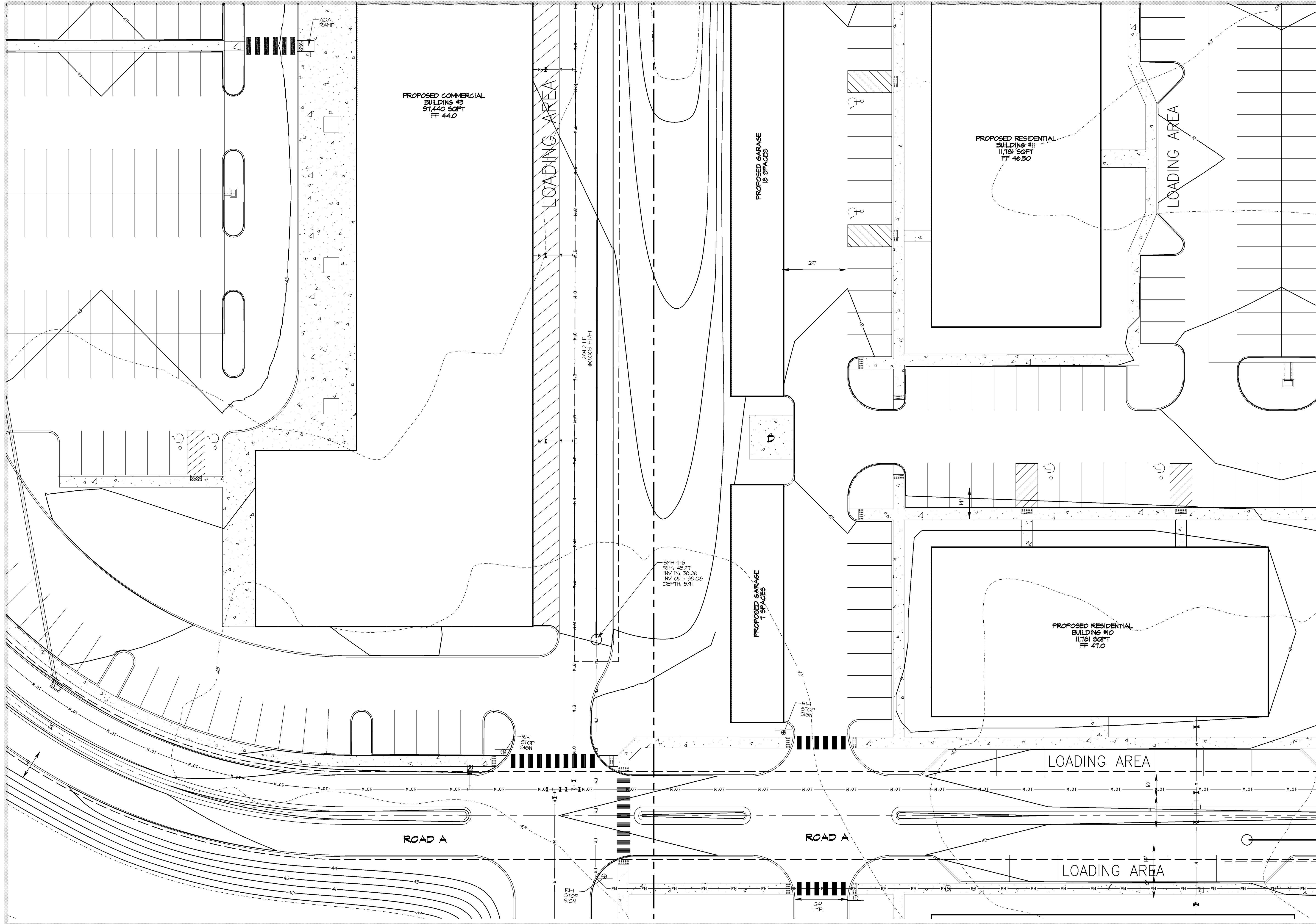
DATE:	REVISION
T-15-22	
DRAWN BY: RTN	
CHECKD. BY: CMK	
PROJ. NO.: 42710	
SCALE: 1" = 20'	
CAD. FILE NAME: 42710D.FRG	

DWG. NO.

G7



MATCH LINE - DWG 67



MATCH LINE - DWG 62



MATCH LINE - DWG 64

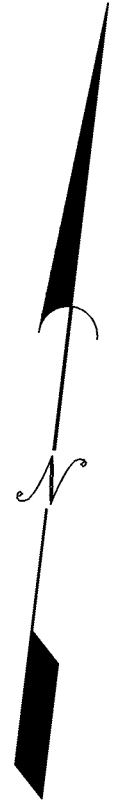
SEAL

GRADING AND DRAINAGE PLAN
 BRIDGEVILLE TOWN CENTER
 NORTHWEST FORK HUNDRED
 SUSSEX COUNTY, DELAWARE

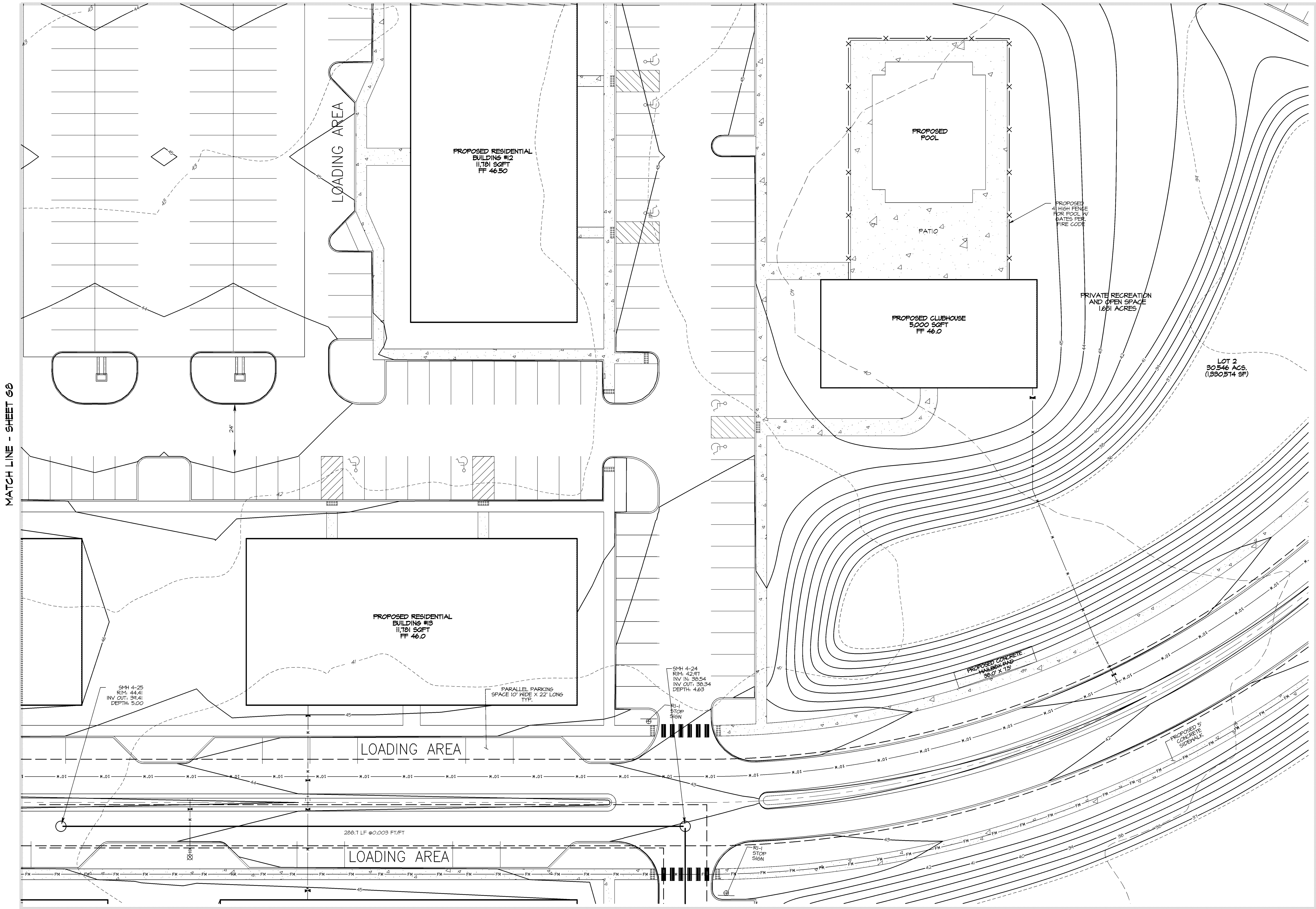
DATE:	REVISION
T-15-22	
DRAWN BY: RTN	
CHECKD. BY: CMK	
PROJ. NO.: 42710	
SCALE: 1" = 20'	
CAD FILE NAME: 42710BD.FRG	

DWG. NO.

G8



MATCH LINE - DWG G4 & G5



MATCH LINE - SHEET G8

MATCH LINE - SHEET G10

MATCH LINE - DWG G13



SEAL

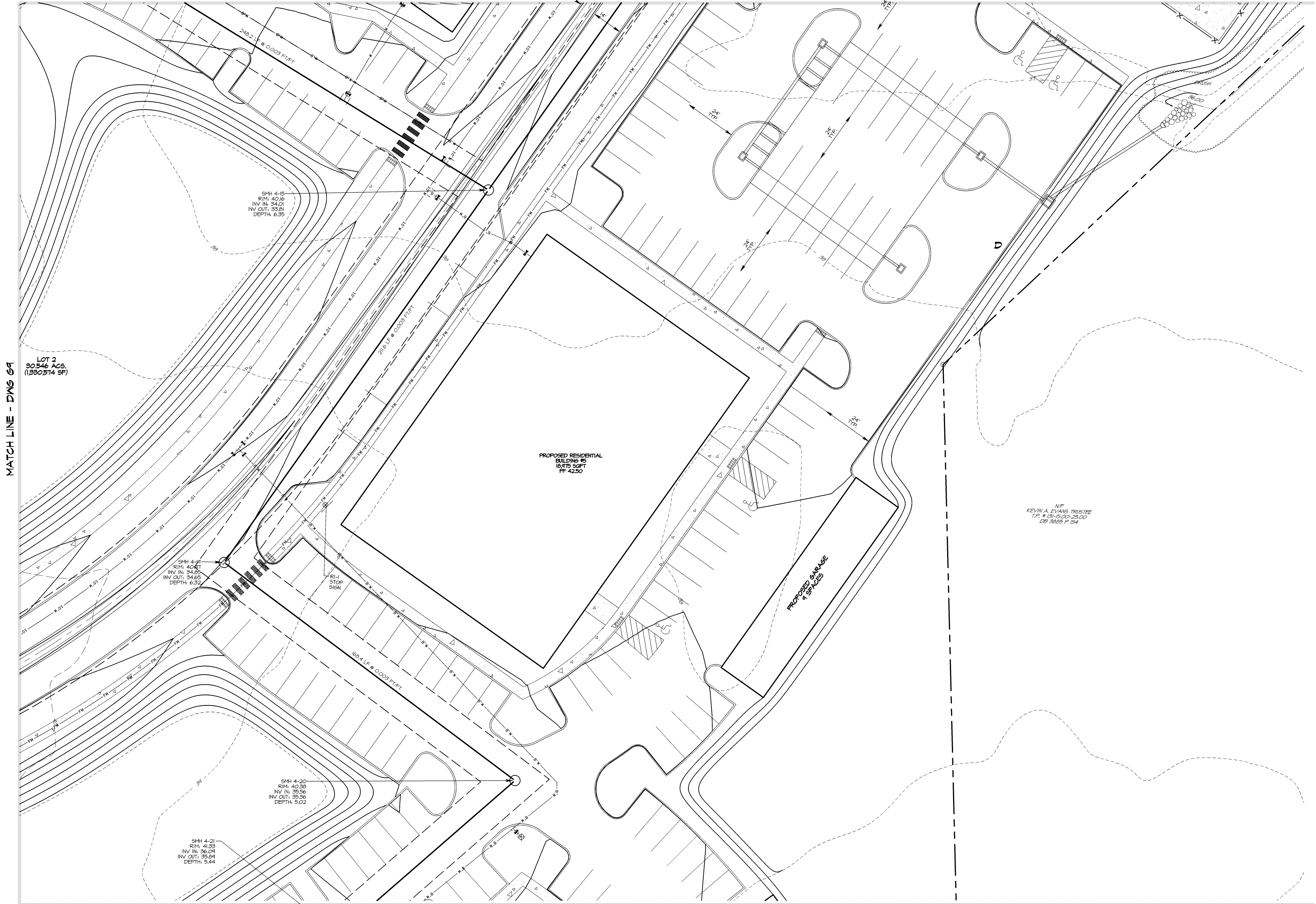
GRADING AND DRAINAGE PLAN
 BRIDGEVILLE TOWN CENTER
 NORTHWEST FORK HUNDRED
 SUSSEX COUNTY, DELAWARE

DATE:	REVISION
T-15-22	
DRAWN BY: RTN	
CHECKD. BY: CMK	
PROJ. NO.: 4210	
SCALE: 1" = 20'	
CAD FILE NAME: 4210B.DWG	

DWG. NO.

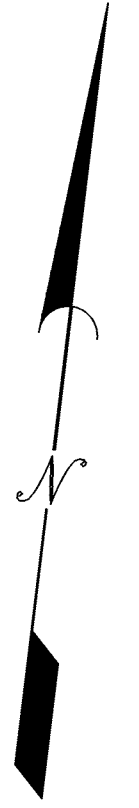
G9

MATCH LINE - DWG 65 & 66



MATCH LINE - DWG 69

MATCH LINE - DWG 614



SEAL

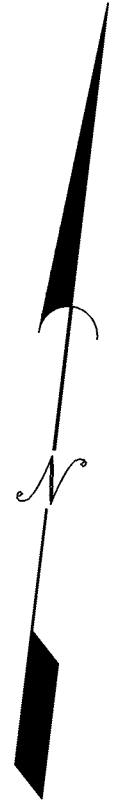
GRADING AND DRAINAGE PLAN
 BRIDGEVILLE TOWN CENTER
 NORTHWEST FORK HUNDRED
 SUSSEX COUNTY, DELAWARE

DATE:	T-15-22
DRAWN BY:	RTN
CHECKD. BY:	CMK
PROJ. NO.:	4210
SCALE:	1" = 20'
CAD. FILE NAME:	4210B.DWG

DWG. NO.

G10





MATCH LINE - DWG 68

ROAD A

ROAD A

LOADING AREA

PROPOSED RESIDENTIAL
BUILDING #4
18,975 SQFT
FF 46.50

PROPOSED COMMERCIAL
BUILDING #4
12,600 SQFT
FF 46.50

PROPOSED GARAGE
14 SPACES

PROPOSED GARAGE
14 SPACES

PARKING SPACE
10' WIDE X 20' LONG
TYP.

SMH 4-12
RIM: 45.84
INV. OUT: 34.14
DEPTH: 6.65

24'
TYP.

24'
TYP.

34'

MATCH LINE - DWG 611

MATCH LINE - DWG 613

GRADING AND DRAINAGE PLAN
BRIDGEVILLE TOWN CENTER
NORTHWEST FORK HUNDRED
SUSSEX COUNTY, DELAWARE

SEAL

REVISION

DATE

DATE: 7-15-22

DRAWN BY: RTN

CHECKD. BY: CMK

PROJ. NO.: 4210

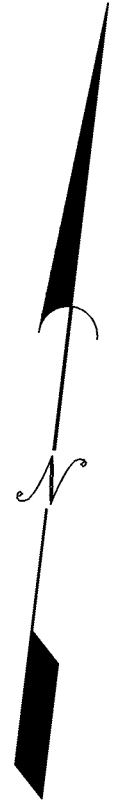
SCALE: 1" = 20'

CAD. FILE NAME:
4210BD.DWG

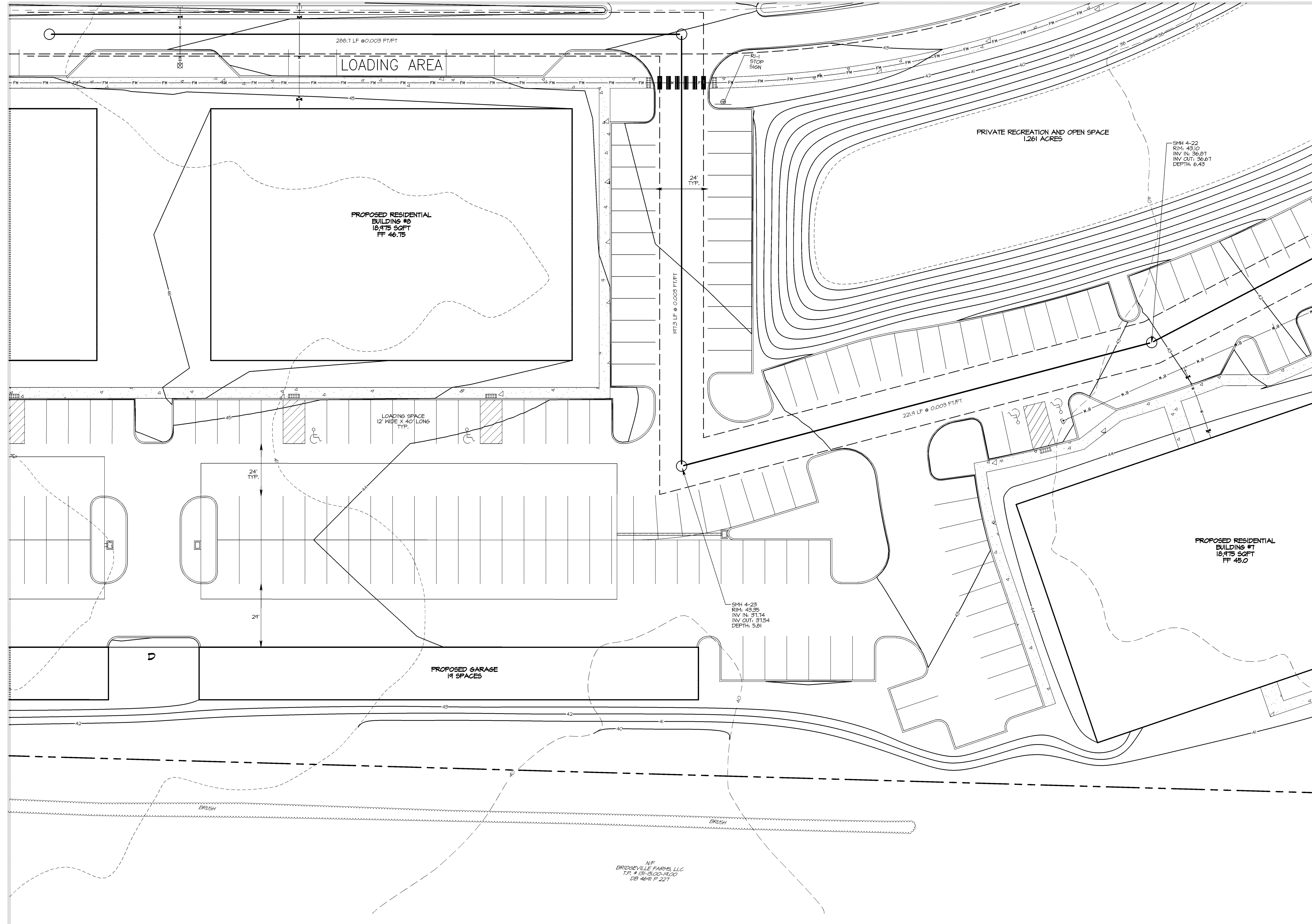
DWG. NO.

G12





MATCH LINE - DWG 69



MATCH LINE - DWG 612

MATCH LINE - DWG 614

SEAL

GRADING AND DRAINAGE PLAN
 BRIDGEVILLE TOWN CENTER
 NORTHWEST FORK HUNDRED
 SUSSEX COUNTY, DELAWARE

REVISION

DATE:	3-21-21
DRAWN BY:	MKL
CHECKD. BY:	CMK
PROJ. NO.:	4210
SCALE:	1" = 20'
CAD. FILE NAME:	4210BDR.FRG

DWG. NO.

G13



N/T
 BRIDGEVILLE FARMS, LLC
 TR. # 31-5,00-11,00
 CB 4691 P 221

SM# 4-23
 RM: 43.35
 INV IN: 31.14
 INV OUT: 31.54
 DEPTH: 5.01

SM# 4-22
 RM: 43.10
 INV IN: 36.87
 INV OUT: 36.67
 DEPTH: 6.45

PRIVATE RECREATION AND OPEN SPACE
 1.261 ACRES

PROPOSED RESIDENTIAL
 BUILDING #0
 10,975 SQFT
 FF 46.75

PROPOSED RESIDENTIAL
 BUILDING #1
 18,975 SQFT
 FF 45.0

PROPOSED GARAGE
 19 SPACES

LOADING SPACE
 12' WIDE X 40' LONG
 TYP.

LOADING AREA

200.1 LF @ 0.003 FT/FT

181.3 LF @ 0.003 FT/FT

221.4 LF @ 0.003 FT/FT

24' TYP.

24'

24' TYP.

D

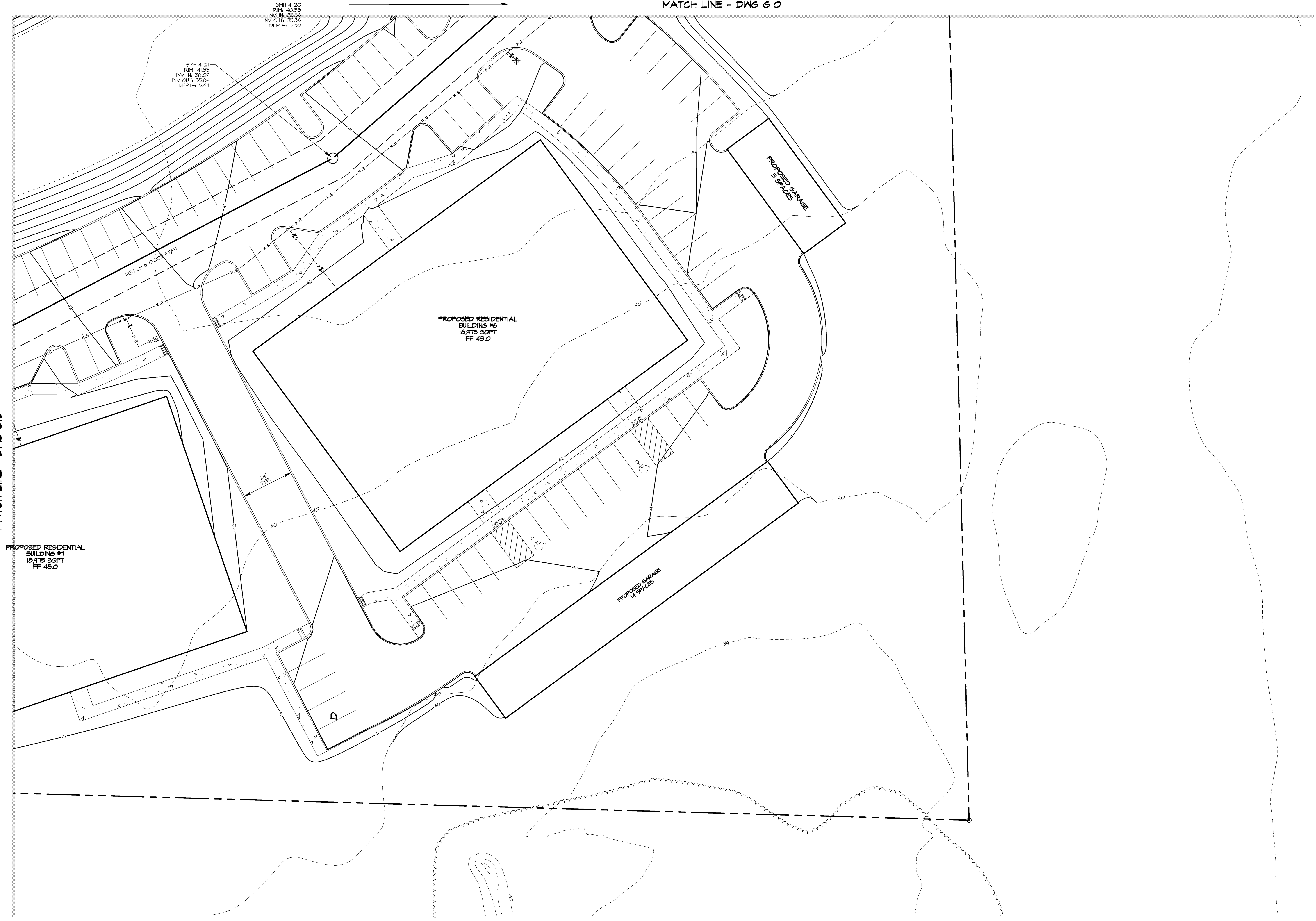
BRUSH

BRUSH



MATCH LINE - DWG 618

MATCH LINE - DWG 610



SEAL

GRADING AND DRAINAGE PLAN
BRIDGEVILLE TOWN CENTER
NORTHWEST FORK HUNDRED
SUSSEX COUNTY, DELAWARE

DATE:	REVISION
3-21-21	
DRAWN BY: MML	
CHECKD. BY: CMK	
PROJ. NO.: 4210	
SCALE: 1" = 20'	
CAD. FILE NAME: 4210BDR.FRG	

DWG. NO.

G14