



LD7 Studio

Landscape Architecture • Planning
4041 University Drive, Suite 202
Fairfax, VA 22030
703.448.3717
www.LD7studio.com

VILLAS AT BRIDGEVILLE
SUSSEX COUNTY, BRIDGEVILLE, DELAWARE

BROOKFIELD PROPERTIES DEVELOPMENT



Professional Certification:
I hereby certify that these documents were prepared or approved by me, and that I am a duly licensed Landscape Architect under the laws of the State of Delaware.
License No. 51-000515
Expiration Date: 01/31/23

THIS DOCUMENT AND THE SEALS AND DESIGNS INCORPORATED HEREIN AS AN INSTRUMENT OF PROFESSIONAL SERVICE, IS THE PROPERTY OF LD7 STUDIO, LLC AND IS NOT TO BE COPIED, REPRODUCED, WHOLE OR IN PART FOR ANY OTHER PROJECT WITHOUT THE WRITTEN AUTHORIZATION OF LD7 STUDIO, LLC.

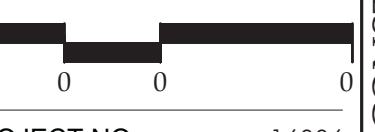
REVISIONS:

OWNER REVIEW 04.29.22

HARDSCAPE DETAILS

DESIGN: DL
DRAWN: TH
CHECKED: DL
N O R T H

SCALE: Viewport Scale



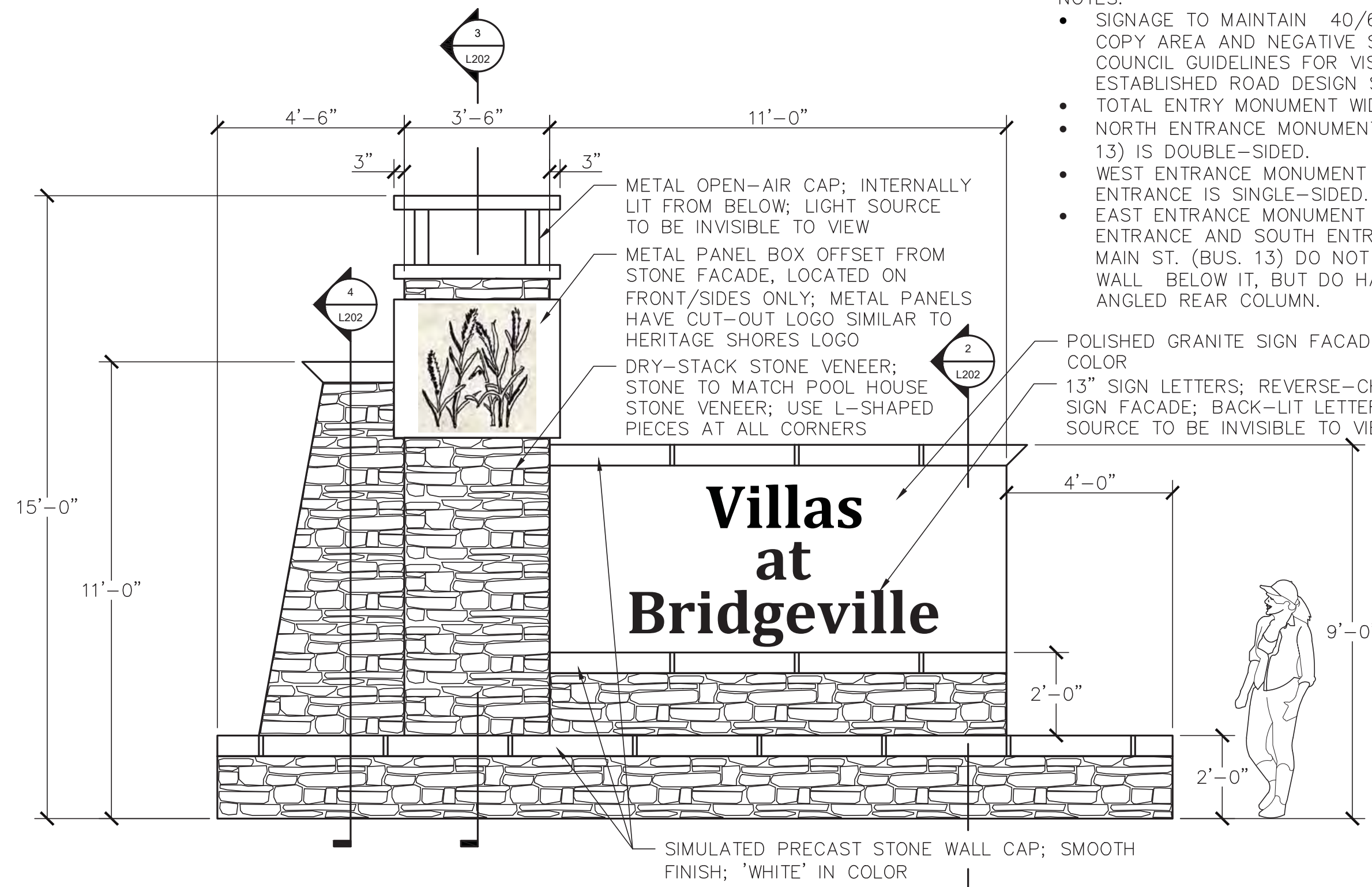
PROJECT NO: 16006

DATE: 00.00.00

L202

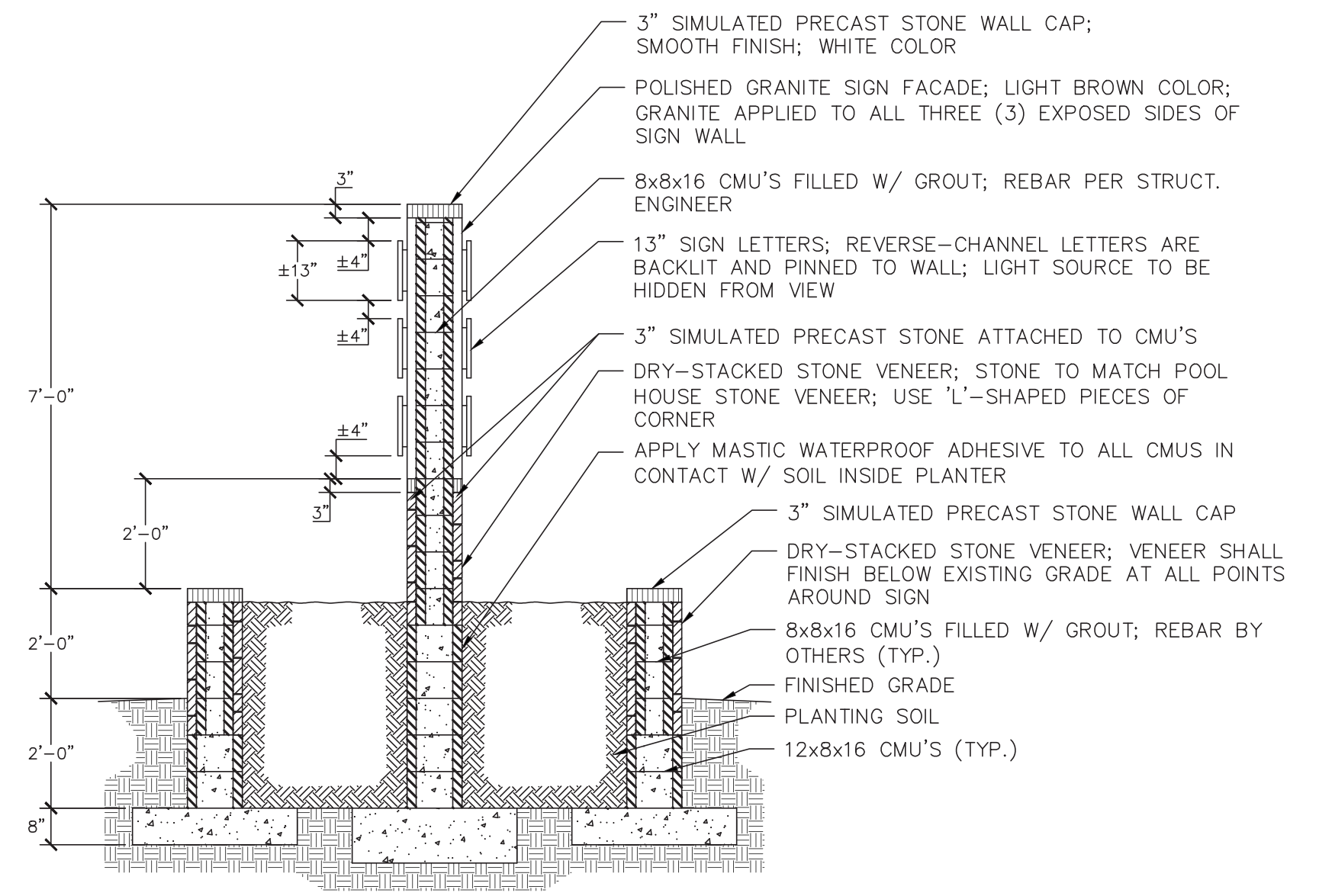
NOT RELEASED FOR CONSTRUCTION

- NOTES:
- SIGNAGE TO MAINTAIN 40/60 RELATIONSHIP BETWEEN COPY AREA AND NEGATIVE SPACE PER U.S. SIGN COUNCIL GUIDELINES FOR VISIBILITY BASED ON ESTABLISHED ROAD DESIGN SPEED OF MAIN STREET.
 - TOTAL ENTRY MONUMENT WIDTH = 23'-0"
 - NORTH ENTRANCE MONUMENT SIGN AT MAIN ST. (BUS 13) IS DOUBLE-SIDED.
 - WEST ENTRANCE MONUMENT SIGN AT CANNON ST. ENTRANCE IS SINGLE-SIDED.
 - EAST ENTRANCE MONUMENT SIGN AT CANNON ST. ENTRANCE AND SOUTH ENTRANCE MONUMENT SIGN AT MAIN ST. (BUS. 13) DO NOT HAVE SIGN FACE OR 2' WALL BELOW IT, BUT DO HAVE TALL COLUMN AND ANGLED REAR COLUMN.



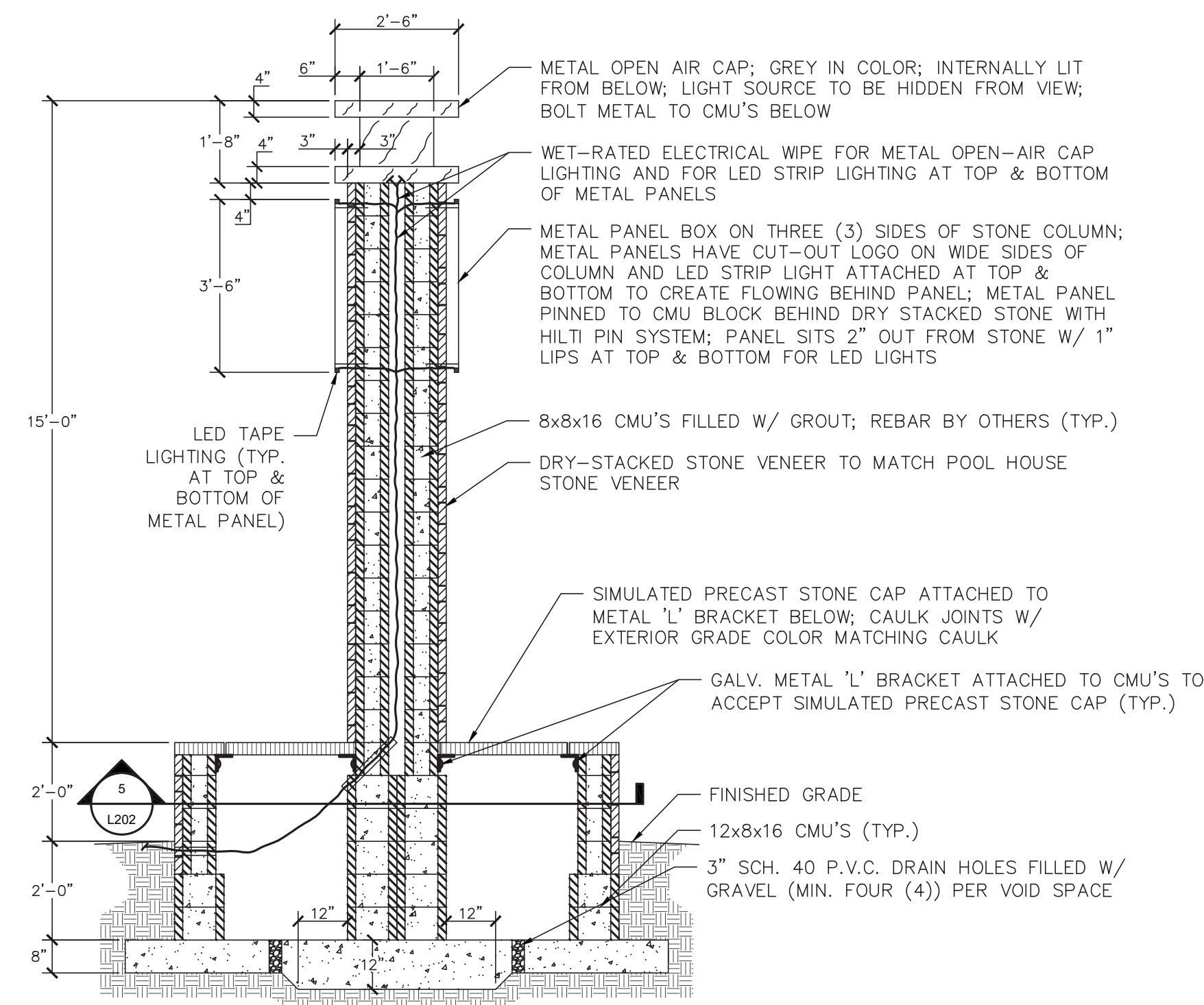
1 ENTRY MONUMENT
Scale: 3/8" = 1'-0"

ELEVATION



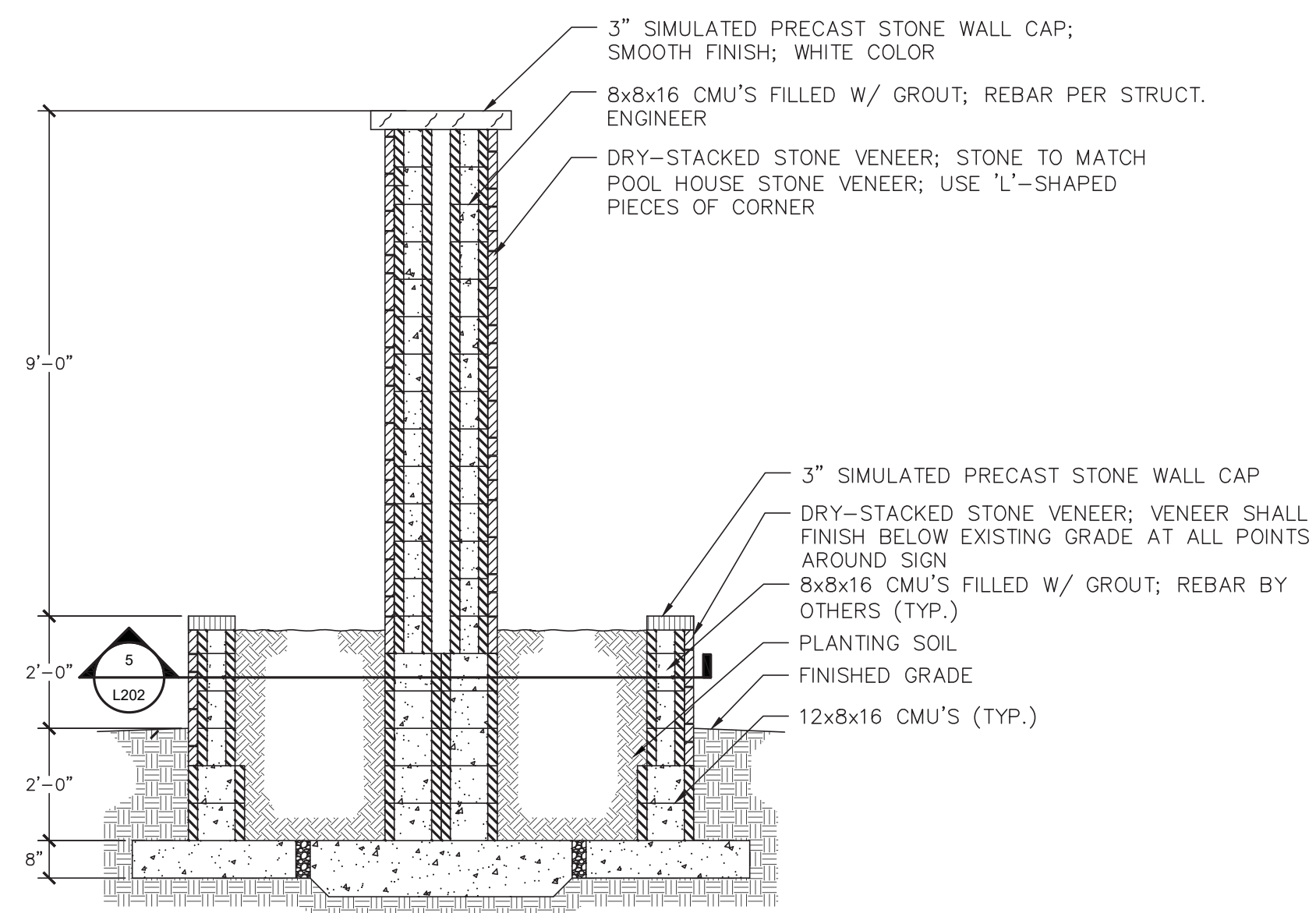
2 ENTRY MONUMENT - SIGN WALL
Scale: 3/8" = 1'-0"

SECTION



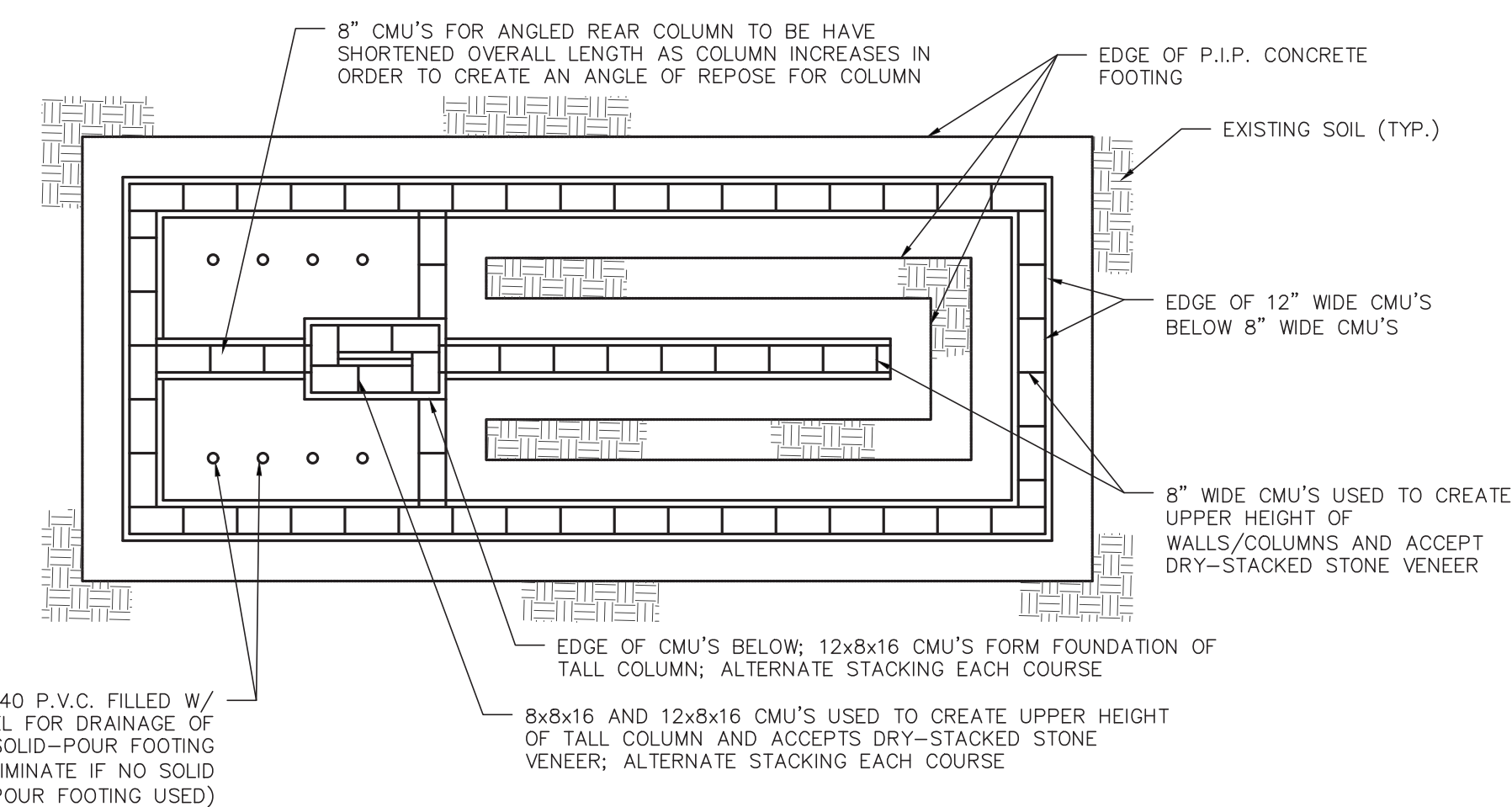
3 ENTRY MONUMENT - TALL COLUMN
Scale: 3/8" = 1'-0"

SECTION



4 ENTRY MONUMENT - ANGLED REAR COLUMN
Scale: 3/8" = 1'-0"

SECTION



5 SIGN BASE
Scale: 1/4" = 1'-0"

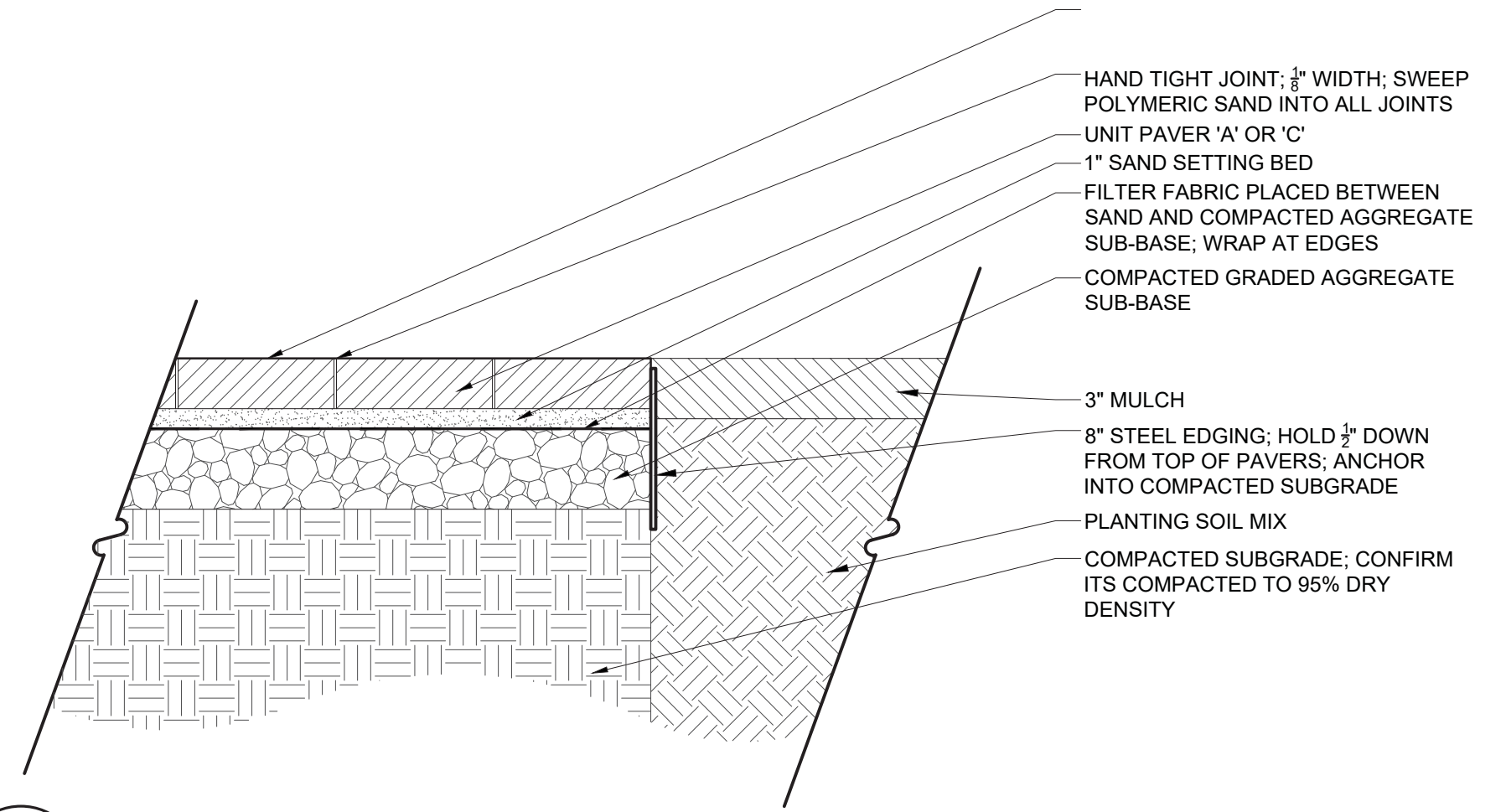
SECTION



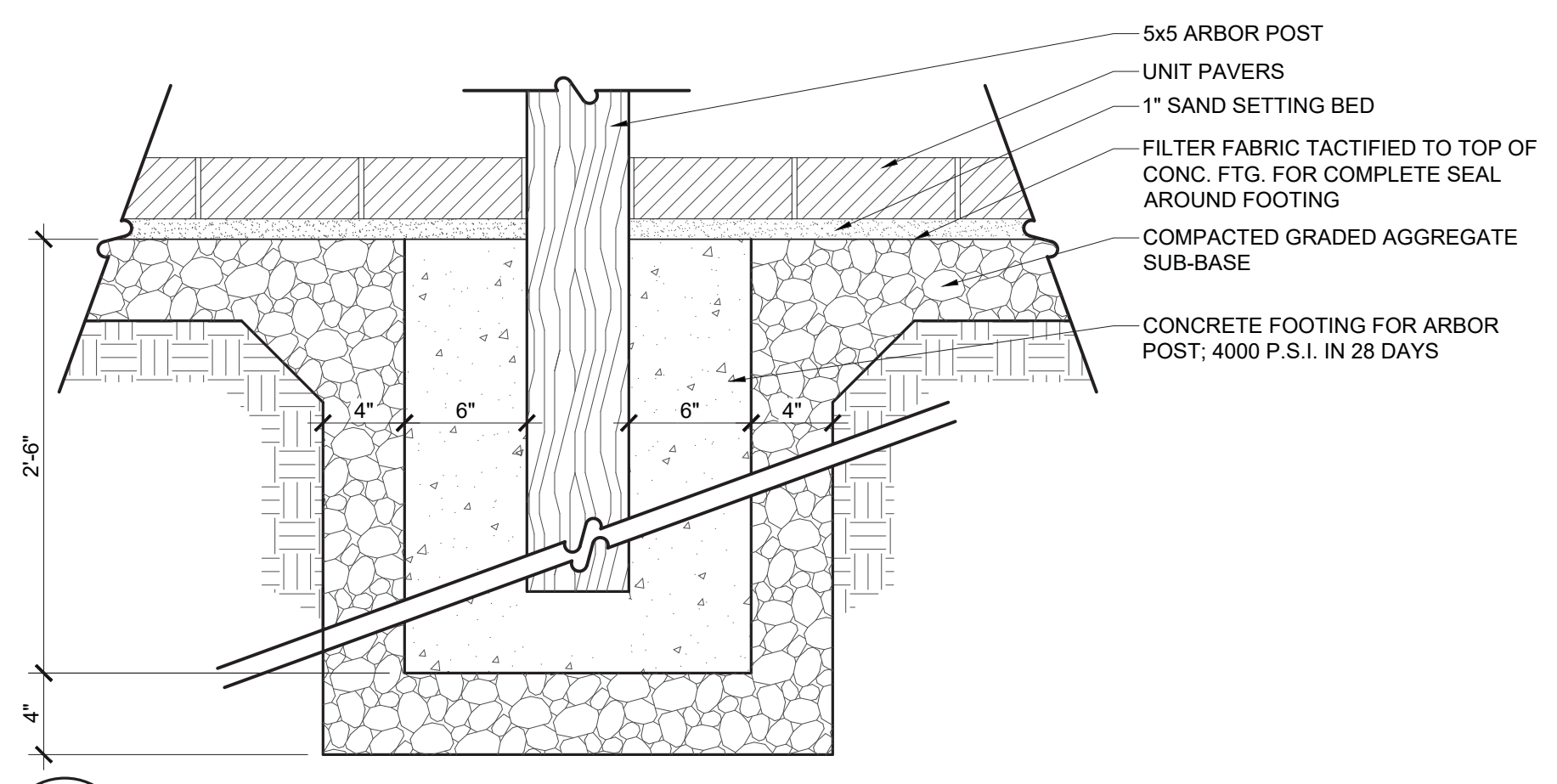
LD7 Studio

Landscape Architecture • Planning
4041 University Drive, Suite 202
Fairfax, VA 22030
703.448.3717
www.LD7studio.com

VILLAS AT BRIDGEVILLE
SUSSEX COUNTY, BRIDGEVILLE, DELAWARE
BROOKFIELD PROPERTIES DEVELOPMENT



1 PAVERS ON SAND SETTING BED SECTION
Scale: 1-1/2" = 1'-0"
L203



2 ARBOR/PAVILION POST FOOTING SECTION
Scale: 1 1/2" = 1'-0"
L203

C:\Users\mbate\Dropbox (Personal)\2B Design\LD7\Heritage Shores\Villas at Bridgeville\Sheets\L203 HARDSCAPE DETAILS.dwg

Professional Certification:
I hereby certify that these documents were prepared or approved by me, and that I am a duly licensed Landscape Architect under the laws of the State of Delaware

License No. S1-0000515
Expiration Date: 01/21/23

THIS DOCUMENT AND THE DESIGN AND DESIGN INCORPORATED HEREIN AS AN INSTRUMENT OF PROFESSIONAL SERVICE, IS THE PROPERTY OF LD7 STUDIO, LLC AND IS NOT TO BE COPIED, REPRODUCED, IN WHOLE OR IN PART FOR ANY OTHER PROJECT WITHOUT THE WRITTEN AUTHORIZATION OF LD7 STUDIO, LLC.

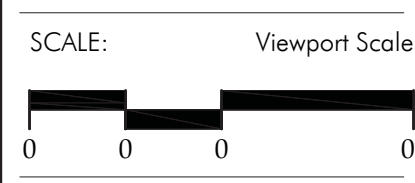
REVISIONS:

OWNER REVIEW	04.29.22

HARDSCAPE DETAILS

DESIGN: DL
DRAWN: TH
CHECKED: DL

N O R T H



PROJECT NO: 16006
DATE: 00.00.00

L203

NOT RELEASED FOR CONSTRUCTION



DESCRIPTOR: BREEZETA - ADIRONDACK CHAIR
 MODEL: COSTAL UPRIGHT ADIRONDACK CHAIR #CO-0400
 SIZE: 35" D X 31" W X 40"H (53lbs)
 QUANTITY: SIX (6); VERIFY FINAL QTY. W/ DEVELOPER
 COMPANY: BREEZETA CASUAL OUTDOOR UNLIMITED 172 ORLAN RD. NEW HOLLAND, PA 17557 www.breezeta.com
 CONTACT: SCOTT'S FURNITURE 18451 SUSSEX HWY. US ROUTE 13 NORTH BRIDGEVILLE, DE19933 PH: 302.337.3274
 COLOR: COLONIAL BLUE, WHITE, AND SAGE SUGGESTED
 NOTES: - CONTRACTOR TO VERIFY QUANTITIES
 - INSTALL PER MANUFACTURER'S RECOMMENDATIONS AND GOVERNING MUNICIPAL/GOVERNMENT REQUIREMENTS

1 ADIRONDACK CHAIR PROD. INFO.
 L301 Scale: NTS



DESCRIPTOR: BREEZETA - ADIRONDACK ACCENT TABLE
 MODEL: CONTEMPORARY ACCENT TABLE - ITEM #CT-2101
 SIZE: 22" D X 22" W X 16"H (25lbs)
 QUANTITY: THREE (3); VERIFY FINAL QTY. W/ DEVELOPER
 COMPANY: BREEZETA CASUAL OUTDOOR UNLIMITED 172 ORLAN RD. NEW HOLLAND, PA 17557 www.breezeta.com
 CONTACT: SCOTT'S FURNITURE 18451 SUSSEX HWY. US ROUTE 13 NORTH BRIDGEVILLE, DE19933 PH: 302.337.3274
 COLOR: COLONIAL BLUE, WHITE, AND SAGE SUGGESTED
 NOTES: - CONFIRM W/ DEVELOPER IF CU
 - CONTRACTOR TO VERIFY QUANTITIES
 - INSTALL PER MANUFACTURER'S RECOMMENDATIONS AND GOVERNING MUNICIPAL/GOVERNMENT REQUIREMENTS

2 ADIRONDACK TABLE PROD. INFO.
 L301 Scale: NTS



DESCRIPTOR: BREEZETA - BENCH
 MODEL: SKYLINE GARDEN BENCH - SK-0405-60 WITH CUSHION #CU-0306-60
 SIZE: 23" D X 60" W X 36"H (75lbs)
 QUANTITY: TWO (2); VERIFY FINAL QTY. W/ DEVELOPER
 COMPANY: BREEZETA CASUAL OUTDOOR UNLIMITED 172 ORLAN RD. NEW HOLLAND, PA 17557 www.breezeta.com
 CONTACT: SCOTT'S FURNITURE 18451 SUSSEX HWY. US ROUTE 13 NORTH BRIDGEVILLE, DE19933 PH: 302.337.3274
 COLOR: COLONIAL BLUE, WHITE, AND SAGE SUGGESTED
 NOTES: - CONFIRM W/ DEVELOPER IF CUSHIONS DESIRED AND COLOR
 - CONTRACTOR TO VERIFY QUANTITIES
 - INSTALL PER MANUFACTURER'S RECOMMENDATIONS AND GOVERNING MUNICIPAL/GOVERNMENT REQUIREMENTS

3 BENCH - ALT 'A' PROD. INFO.
 L301 Scale: NTS



DESCRIPTOR: HANNAH BENCH - 6' LONG
 MODEL: MODEL #SKU OZAM2105 HEAVY DUTY STEEL SLAT CONSTRUCTION W/ ANTI-RUST PRIMER
 SIZE: 6' LENGTH, 69" x 18"W x 19"H; 132 LBS
 QUANTITY: PER PLANS
 COMPANY: BARCO PRODUCTS 24 N. WASHINGTON AVE BATAVIA, IL 60510 P. 866.524.8063 WWW.BARCOPRODUCTS.COM
 COLOR: PEWTER POWDER-COATED FINISH
 NOTES: - CONTRACTOR TO VERIFY QUANTITIES
 - INSTALL PER MANUFACTURER'S RECOMMENDATIONS AND GOVERNING MUNICIPAL/GOVERNMENT REQUIREMENTS

4 BENCH - ALT 'B' PROD. INFO.
 L301 Scale: NTS



MODEL: TWO-TONE PANEL DESIGN WASTE RECEPTACLE
 DESCRIPTION: MODEL #KTR0974, 33GAL. W/ SIDE LOAD HOOD AND PUSH DOOR
 SIZE: 21.25" x 21" W x 40.5" H; 84LBS
 COMPANY: BARCO PRODUCTS 24 N. WASHINGTON AVE BATAVIA, IL 60510 P. 866.524.8063 WWW.BARCOPRODUCTS.COM
 COLOR: GRAY FRAME AND SIDES
 QUANTITY: SEE PLANS
 NOTES: - CONTRACTOR TO VERIFY QUANTITIES
 - INSTALL PER MANUFACTURER'S RECOMMENDATIONS AND GOVERNING MUNICIPAL/GOVERNMENT REQUIREMENTS
 - VERIFY TYPES OF OPENINGS (TRASH, RECYCLE, ETC.) WITH OWNER BEFORE PURCHASING

5 TRASH RECEPTACLE - ALT 'A' PROD. INFO.
 L301 Scale: NTS



MODEL: SIGNATURE ALUMINUM RECEPTACLE W/ SIDE DOOR
 DESCRIPTION: 32 GAL. RECEPTACLE, RUST-PROOF HEAVY DUTY ALUMINUM MODEL #08E2960
 SIZE: 24" x 24" W x 46" H; 60LBS
 COMPANY: BARCO PRODUCTS 24 N. WASHINGTON AVE BATAVIA, IL 60510 P. 866.524.8063 WWW.BARCOPRODUCTS.COM
 COLOR: PEWTER POWDER-COATED FINISH
 QUANTITY: PER PLANS
 NOTES: - CONTRACTOR TO VERIFY QUANTITIES
 - INSTALL PER MANUFACTURER'S RECOMMENDATIONS AND GOVERNING MUNICIPAL/GOVERNMENT REQUIREMENTS

6 TRASH RECEPTACLE - ALT 'B' PROD. INFO.
 L301 Scale: NTS



MODEL: LOUVERED PERGOLA - 12x12
 DESCRIPTION: STANDARD WHITE VINYL LOUVERED PERGOLA WITH ALUM. INSERTS:
 - STAINLESS STEEL HARDWARE
 - 6" SQ. POSTS
 - DOUBLE 2"x8" HEADERS W/ CORNER BRACES AND CHAMFER END CUTS
 - LOUVERED TOP RUNNERS
 - 2x6 RUNNER W/ CHAMFERED END CUTS
 - 12" OVERHANG EACH SIDE
 - 90° POST HT.
 - ALUMINUM INSERTS
 SIZE: 12' x 12'
 COMPANY: www.fifthroom.com 5410 ROUTE 8 GIBSONIA, PA 15044 P. 888.293.2339
 CONTACT: MARK WINTER OR OTHER EXT. 250
 COLOR: WHITE
 QUANTITY: 1
 NOTES: - INSTALL SO LOUVERS GIVE MAXIMUM SHADE
 - INSTALL PER MANUFACTURER'S RECOMMENDATIONS AND GOVERNING MUNICIPAL/GOVERNMENT REQUIREMENTS
 - CONTRACTOR TO PROVIDE CONC. FOOTING FOR COLUMNS

7 12X12 PAVILION PROD. INFO.
 L301 Scale: NTS



MODEL: VICTORIEN
 DESCRIPTION: 60MM RECTANGULAR PAVER
 SIZE: PAVER A (225MM) - 8-1/2" L x 4-1/4" W x 2-3/8" H
 COMPANY: TECHO-BLOC 5255 ALBERT-MILL CHAMP ST. HUBERT, QUEBEC J3Y 8Z8 ERIC.ZYRKOWSKI@TECHO-BLOC.COM
 CONTACT: ERIC ZYRKOWSKI P. 703.928.2878 ERIC.ZYRKOWSKI@TECHO-BLOC.COM
 COLOR: SANDLEWOOD; SHALE GREY AND MOJAVE BEIGE; FINAL COLOR T.B.D.
 PATTERN: BASKETWEAVE W/ STACKED BOND PERIMETER PATTERN
 FINISH: SMOOTH
 QUANTITY: PER PLAN
 COLOR: - CONTRACTOR TO VERIFY QUANTITIES
 - INSTALL PER MANUFACTURER'S RECOMMENDATIONS AND GOVERNING MUNICIPAL/GOVERNMENT REQUIREMENTS
 - PAVER AREAS TO HAVE COLORS INSTALLED RANDOMLY FROM THREE (3) DIFFERENT PALETTEES; COLORS TO BE ORDERED SO EACH IS 1/3 OF TOTAL PAVER SQ. FOOTAGE NEEDED
 - JOINTS TO BE SWEEPED WITH POLYMERIC SAND MATCHING PAVERS FOR ALL OTHER AREAS EXCEPT IF DETAIL 3/L301 USED.

8 PAVERS PROD. INFO.
 L301 Scale: NTS



MODEL: 6x12' CEDAR IN-LINE PERGOLA
 DESCRIPTION: CEDAR IN-LINE PERGOLA WITH:
 - IN-GROUND POST MOUNTING
 - ANGLED END-CUTS ON BEAMS, RUNNERS
 - 5X5 SOLID CEDAR POSTS - 10' TALL
 - 2X8 DOUBLE BEAMS - ANGLED END CUTS
 - 2X6 DOUBLE RUNNERS - ANGLED END CUTS
 - 2X2 TOP RUNNERS - 8" O.C.
 - GALV. HARDWARE
 - DEEP EBONY TONE SEMI-TRANSPARENT STAIN/SEALER ON ENTIRE PERGOLA
 SIZE: 6' x 12'; 515 LBS
 COMPANY: www.fifthroom.com 5410 ROUTE 8 GIBSONIA, PA 15044 P. 888.293.2339
 CONTACT: MARK WINTER OR OTHER EXT. 250
 COLOR: DEEP EBONY SEMI-TRANS. STAIN/SEALER
 QUANTITY: SEE PLANS
 NOTES: - CONTRACTOR TO VERIFY QUANTITIES
 - INSTALL PER MANUFACTURER'S RECOMMENDATIONS AND GOVERNING MUNICIPAL/GOVERNMENT REQUIREMENTS

9 6'X12' PERGOLA PROD. INFO.
 L301 Scale: NTS



MODEL: DOG WASTE STATION
 DESCRIPTION: SINGLE-PULL DOG WASTE STATION - ITEM #7408S INCLUDES DISPENSER, SQ. GALV. POST, 400 SINGLE PULL BAGS, 11-GAL. SQ. WASTE RECEPTACLE, 50 CAN LINERS, TWO (2) KEYS, SIGN, HARDWARE
 SIZE: 73"H x 18"W x 10"D
 QUANTITY: THREE (3)
 COMPANY: DOG-ON-IT PARKS 2211 37TH ST. EVERETT, WA 98201 P. 877.348.3647 WWW.DOG-ON-IT-PARKS.COM
 COLOR: GREEN
 NOTES: - CONTRACTOR TO VERIFY QUANTITIES
 - INSTALL PER MANUFACTURER'S RECOMMENDATIONS AND GOVERNING MUNICIPAL/GOVERNMENT REQUIREMENTS

10 DOG WASTE STATION PROD. INFO.
 L301 Scale: NTS



LD7 Studio

Landscape Architecture • Planning
4041 University Drive, Suite 202
Fairfax, VA 22030
703.448.3717
www.LD7studio.com

VILLAS AT BRIDGEVILLE
SUSSEX COUNTY, BRIDGEVILLE, DELAWARE

BROOKFIELD PROPERTIES DEVELOPMENT



Professional Certification:
I hereby certify that these documents were prepared or approved by me, and that I am a duly licensed Landscape Architect under the laws of the State of Delaware.

License No. S1000515
Expiration Date: 01/31/23

THIS DOCUMENT AND THE DESIGN AND DESIGN INCORPORATED HEREIN AS AN INSTRUMENT OF PROFESSIONAL SERVICE, IS THE PROPERTY OF LD7 STUDIO, LLC AND IS NOT TO BE COPIED, REPRODUCED, IN WHOLE OR IN PART FOR ANY OTHER PROJECT WITHOUT THE WRITTEN AUTHORIZATION OF LD7 STUDIO, LLC.

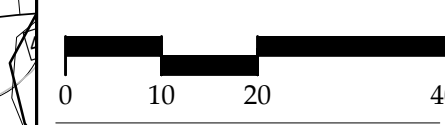
REVISIONS:

HUD SBMSSN.	01.14.22
UPD TD HUD SBMSSN	08.03.22
Δ REV. BUFFER	11.02.22

LANDSCAPE PLAN

DESIGN:	DL
DRAWN:	TH
CHECKED:	DL

Scale: 1" = 20'-0"

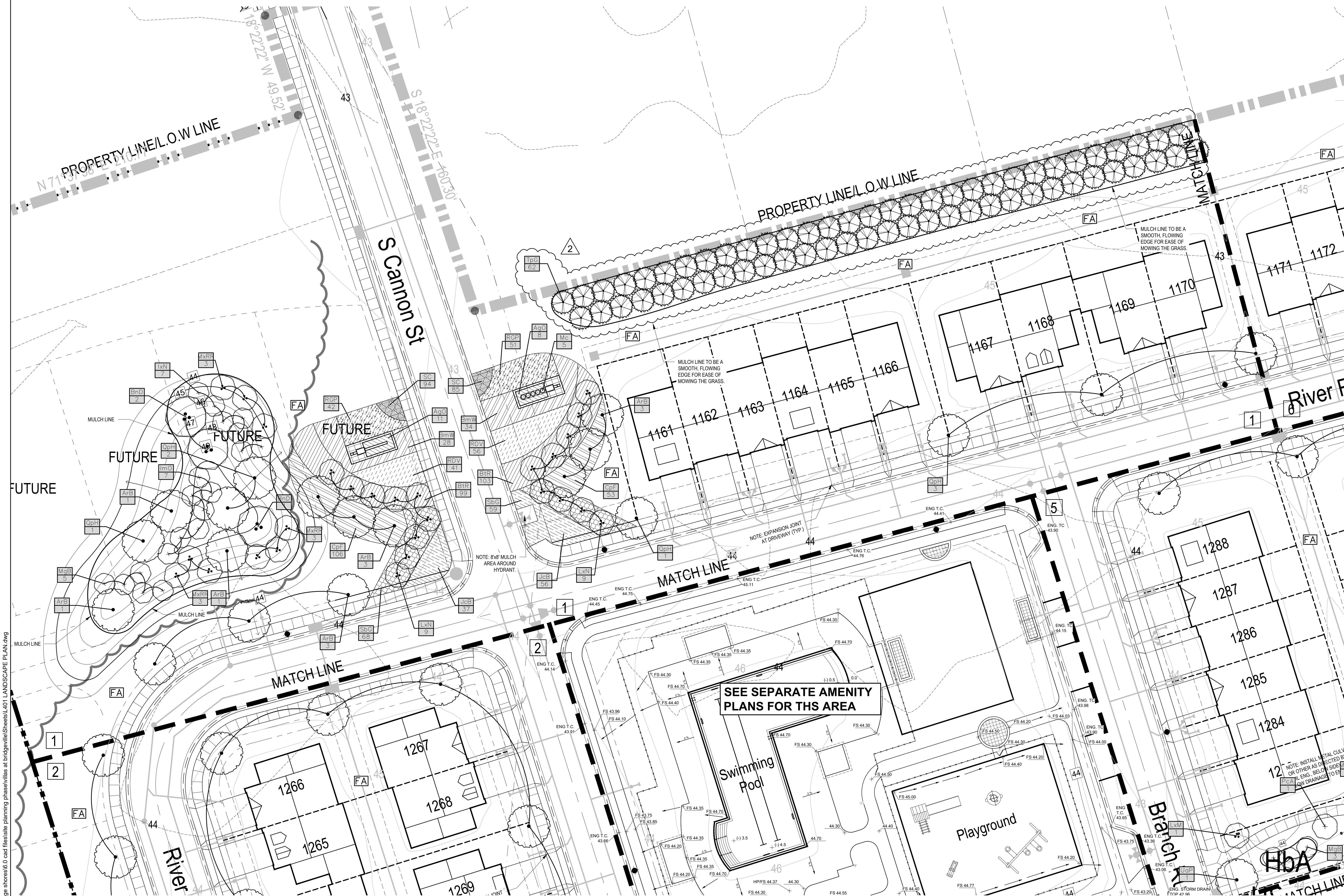


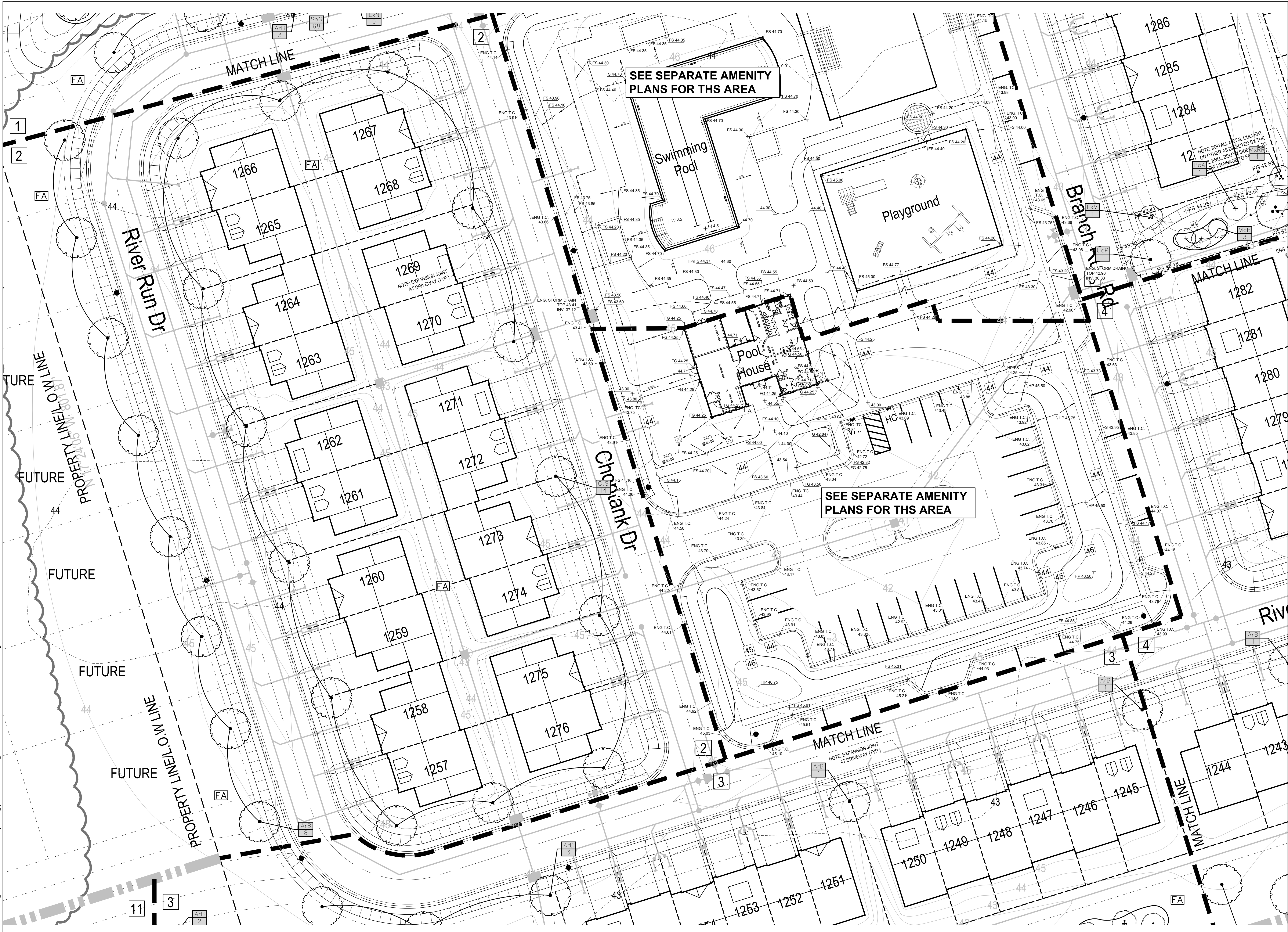
PROJECT NO: 16006
DATE: 00.00.00

L401

NOT RELEASED FOR CONSTRUCTION

P:\110044 heritage shores\16.0 cad files\site planning phase\ Villas at bridgeville\Sheet\1401 LANDSCAPE PLAN.dwg





SEE SEPARATE AMENITY PLANS FOR THIS AREA

SEE SEPARATE AMENITY PLANS FOR THIS AREA



Professional Certification:
 I hereby certify that these documents were prepared or approved by me, and that I am a duly licensed Landscape Architect under the laws of the State of Delaware.
 License No. S1-0000515
 Expiration Date: 01/31/23

REVISIONS:
 HUD SBMSSN. 01.14.22
 UPD'D HUD SBMSSN. 08.03.22

LANDSCAPE PLAN
 DESIGN: DL
 DRAWN: TH
 CHECKED: DL
 Scale: 1" = 20'-0"
 PROJECT NO: 16006
 DATE: 00.00.00

L402

NOT RELEASED FOR CONSTRUCTION

P:\110044 heritage shores\6.0 cad files\site planning phase\site plan\bridgeville\sheet\l402 LANDSCAPE PLAN.dwg



LD7 Studio

Landscape Architecture • Planning
4041 University Drive, Suite 202
Fairfax, VA 22030
703.448.3717
www.LD7studio.com

VILLAS AT BRIDGEVILLE
SUSSEX COUNTY, BRIDGEVILLE, DELAWARE

BROOKFIELD PROPERTIES DEVELOPMENT



Professional Certification:
I hereby certify that these documents were prepared or approved by me, and that I am a duly licensed Landscape Architect under the laws of the State of Delaware.

License No. S1-000515
Expiration Date: 01/31/23

THIS DOCUMENT AND THE DESIGN AND DESIGN INCORPORATED HEREIN AS AN INSTRUMENT OF PROFESSIONAL SERVICE, IS THE PROPERTY OF LD7 STUDIO, LLC AND IS NOT TO BE COPIED, REPRODUCED, IN WHOLE OR IN PART FOR ANY OTHER PROJECT WITHOUT THE WRITTEN AUTHORIZATION OF LD7 STUDIO, LLC.

REVISIONS:
HUD SBMSSN. 01.14.22
UPD TD HUD SBMSSN 08.03.22

LANDSCAPE PLAN

DESIGN: DL
DRAWN: TH
CHECKED: DL

Scale: 1" = 20'-0"

0 10 20 40

PROJECT NO: 16006

DATE: 00.00.00

L403

NOT RELEASED FOR CONSTRUCTION



SEE SEPARATE AMENITY PLANS FOR THIS AREA

MATCH LINE

NOTE EXPANSION JOINT AT DRIVEWAY (TYP.)

PROPERTY LINE L.O.W. LINE

MATCH LINE

MULCH LINE TO BE A SMOOTH, FLOWING EDGE FOR EASE OF MOWING THE GRASS.

MULCH LINE TO BE A SMOOTH, FLOWING EDGE FOR EASE OF MOWING THE GRASS.

P:\110044 heritage shores\6.0 cad files\site planning phase\ Villas at bridgeville\Sheet1-L403 LANDSCAPE PLAN.dwg



LD7 Studio

Landscape Architecture • Planning
4041 University Drive, Suite 202
Fairfax, VA 22030
703.448.3717
www.LD7studio.com

VILLAS AT BRIDGEVILLE
SUSSEX COUNTY, BRIDGEVILLE, DELAWARE

BROOKFIELD PROPERTIES DEVELOPMENT



Professional Certification:
I hereby certify that these documents were prepared or approved by me, and that I am a duly licensed Landscape Architect under the laws of the State of Delaware.

License No. S1000515
Expiration Date: 01/31/23

THIS DOCUMENT AND THE DESIGN AND DESIGNS INCORPORATED HEREIN AS AN INSTRUMENT OF PROFESSIONAL SERVICE, IS THE PROPERTY OF LD7 STUDIO, LLC AND IS NOT TO BE COPIED, REPRODUCED, IN WHOLE OR IN PART FOR ANY OTHER PROJECT WITHOUT THE WRITTEN AUTHORIZATION OF LD7 STUDIO, LLC.

REVISIONS:
HUD SBMSSN. 01.14.22
UPD TD HUD SBMSSN. 08.03.22

LANDSCAPE PLAN

DESIGN: DL
DRAWN: TH
CHECKED: DL

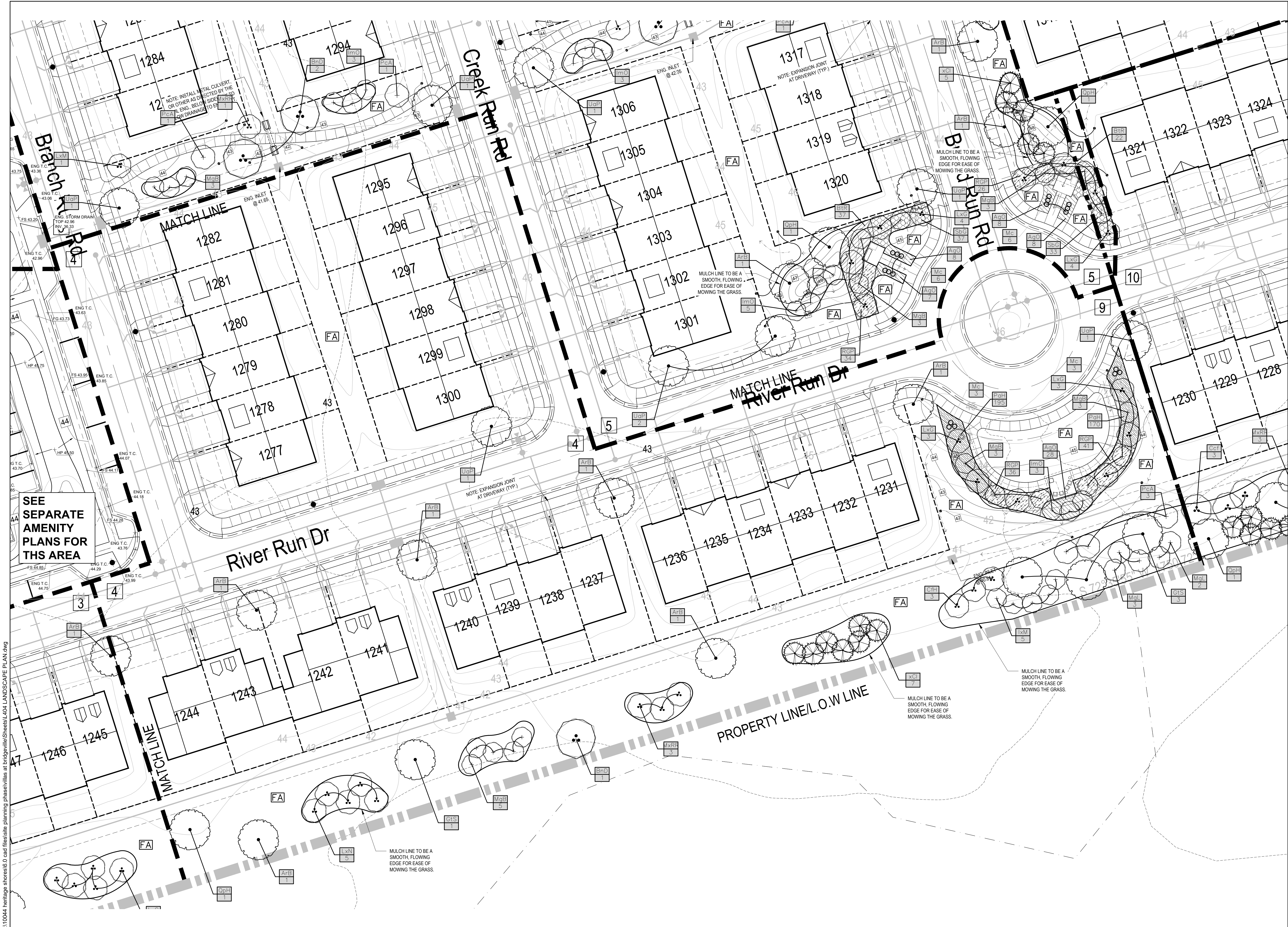
Scale: 1" = 20'-0"

0 10 20 40
PROJECT NO: 16006

DATE: 00.00.00

L404

NOT RELEASED FOR CONSTRUCTION



P:\110044_heritage_shores\6.0_cad_files\site_planning_phase\site_planning\phase\l404_LANDSCAPE_PLAN.dwg



LD7 Studio

Landscape Architecture • Planning
4041 University Drive, Suite 202
Fairfax, VA 22030
703.448.3717
www.LD7studio.com

VILLAS AT BRIDGEVILLE
SUSSEX COUNTY, BRIDGEVILLE, DELAWARE

BROOKFIELD PROPERTIES DEVELOPMENT



Professional Certification:
I hereby certify that these documents were prepared or approved by me, and that I am a duly licensed Landscape Architect under the laws of the State of Delaware.

License No. S1-0000515
Expiration Date: 01/31/23

THIS DOCUMENT AND THE DESIGN INCORPORATED HEREIN AS AN INSTRUMENT OF PROFESSIONAL SERVICE, IS THE PROPERTY OF LD7 STUDIO, LLC AND IS NOT TO BE COPIED, REPRODUCED, IN WHOLE OR IN PART FOR ANY OTHER PROJECT WITHOUT THE WRITTEN AUTHORIZATION OF LD7 STUDIO, LLC.

REVISIONS:

HUD SBMSSN	01.14.22
UPD'D HUD SBMSSN	08.03.22

LANDSCAPE PLAN

DESIGN: DL
DRAWN: TH
CHECKED: DL

NORTH

Scale: 1" = 20'-0"



PROJECT NO: 16006
DATE: 00.00.00

L405

NOT RELEASED FOR CONSTRUCTION



P:\11004 heritage shores\6.0 cad files\site planning phase\site plans\l405 LANDSCAPE PLAN.dwg



LD7 Studio

Landscape Architecture • Planning
4041 University Drive, Suite 202
Fairfax, VA 22030
703.448.3717
www.LD7studio.com

VILLAS AT BRIDGEVILLE
SUSSEX COUNTY, BRIDGEVILLE, DELAWARE

BROOKFIELD PROPERTIES DEVELOPMENT



Professional Certification:
I hereby certify that these documents were prepared or approved by me, and that I am a duly licensed Landscape Architect under the laws of the State of Delaware.

License No. S1000515
Expiration Date: 01/31/23

THIS DOCUMENT AND THE DESIGN AND DESIGN INCORPORATED HEREIN AS AN INSTRUMENT OF PROFESSIONAL SERVICE, IS THE PROPERTY OF LD7 STUDIO, LLC AND IS NOT TO BE COPIED, REPRODUCED, IN WHOLE OR IN PART FOR ANY OTHER PROJECT WITHOUT THE WRITTEN AUTHORIZATION OF LD7 STUDIO, LLC.

REVISIONS:

HUD SBMSSN.	01.14.22
UPD TD HUD SBMSSN	08.03.22
REV. BUFFER	11.02.22

LANDSCAPE PLAN

DESIGN: DL
DRAWN: TH
CHECKED: DL

NORTH

Scale: 1" = 20'-0"

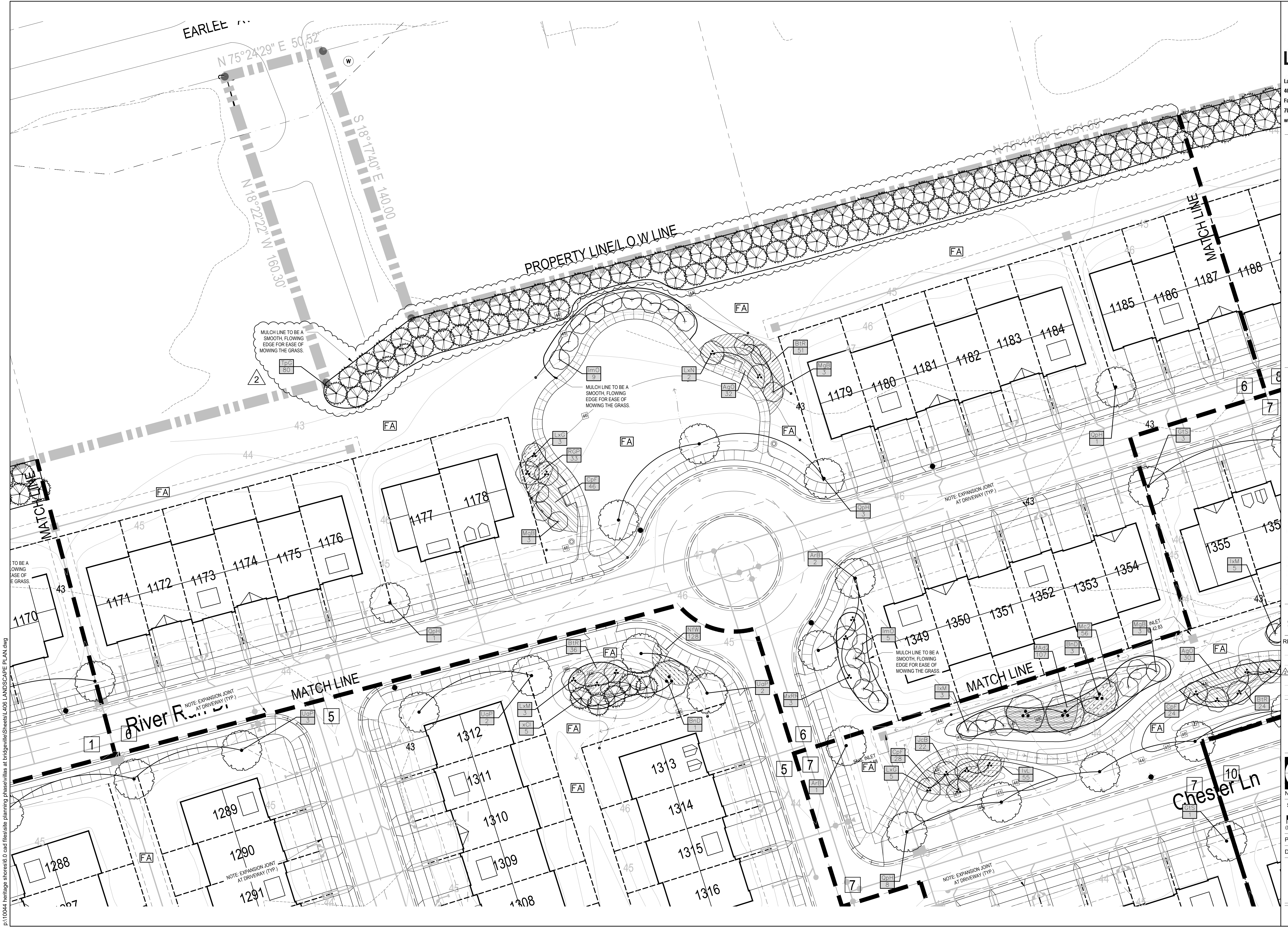
0 10 20 40

PROJECT NO: 16006

DATE: 00.00.00

L406

NOT RELEASED FOR CONSTRUCTION



P:\110044 heritage shores\6.0 cad files\site planning phase\site plan\bridgeville\sheet\l406 LANDSCAPE PLAN.dwg



LD7 Studio

Landscape Architecture • Planning
4041 University Drive, Suite 202
Fairfax, VA 22030
703.448.3717
www.LD7studio.com

VILLAS AT BRIDGEVILLE
SUSSEX COUNTY, BRIDGEVILLE, DELAWARE

BROOKFIELD PROPERTIES DEVELOPMENT



Professional Certification:
I hereby certify that these documents were prepared or approved by me, and that I am a duly licensed Landscape Architect under the laws of the State of Delaware.
License No. S1-000515
Expiration Date: 01/31/23

THIS DOCUMENT AND THE DESIGN AND DESIGN INCORPORATED HEREIN AS AN INSTRUMENT OF PROFESSIONAL SERVICE, IS THE PROPERTY OF LD7 STUDIO, LLC AND IS NOT TO BE COPIED, REPRODUCED, IN WHOLE OR IN PART FOR ANY OTHER PROJECT WITHOUT THE WRITTEN AUTHORIZATION OF LD7 STUDIO, LLC.

REVISIONS:
HUD SBMSSN. 01.14.22
UPDTD HUD SBMSSN. 08.03.22

LANDSCAPE PLAN

DESIGN: DL
DRAWN: TH
CHECKED: DL
NORTH

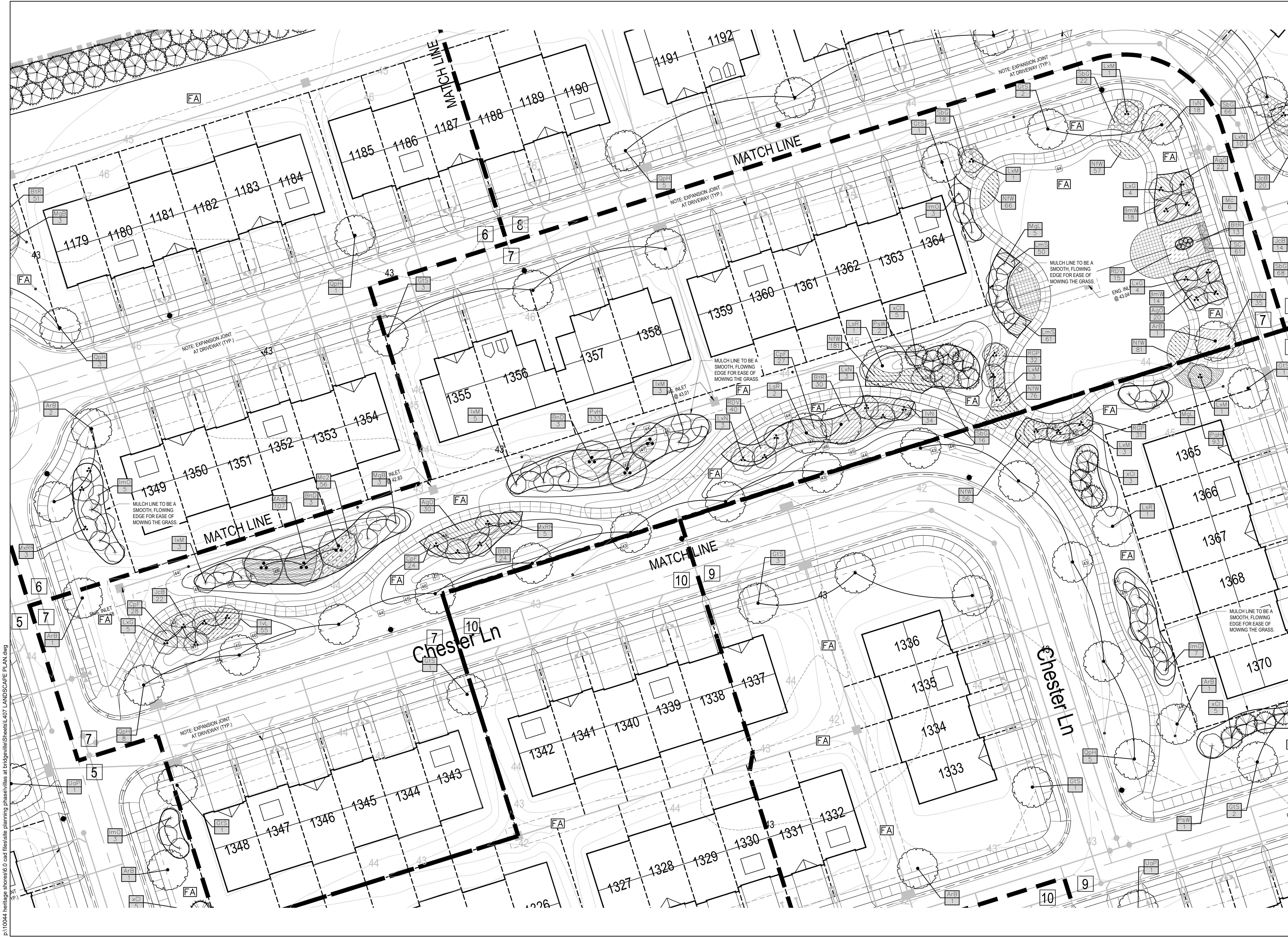
Scale: 1" = 20'-0"

0 10 20 40

PROJECT NO: 16006
DATE: 00.00.00

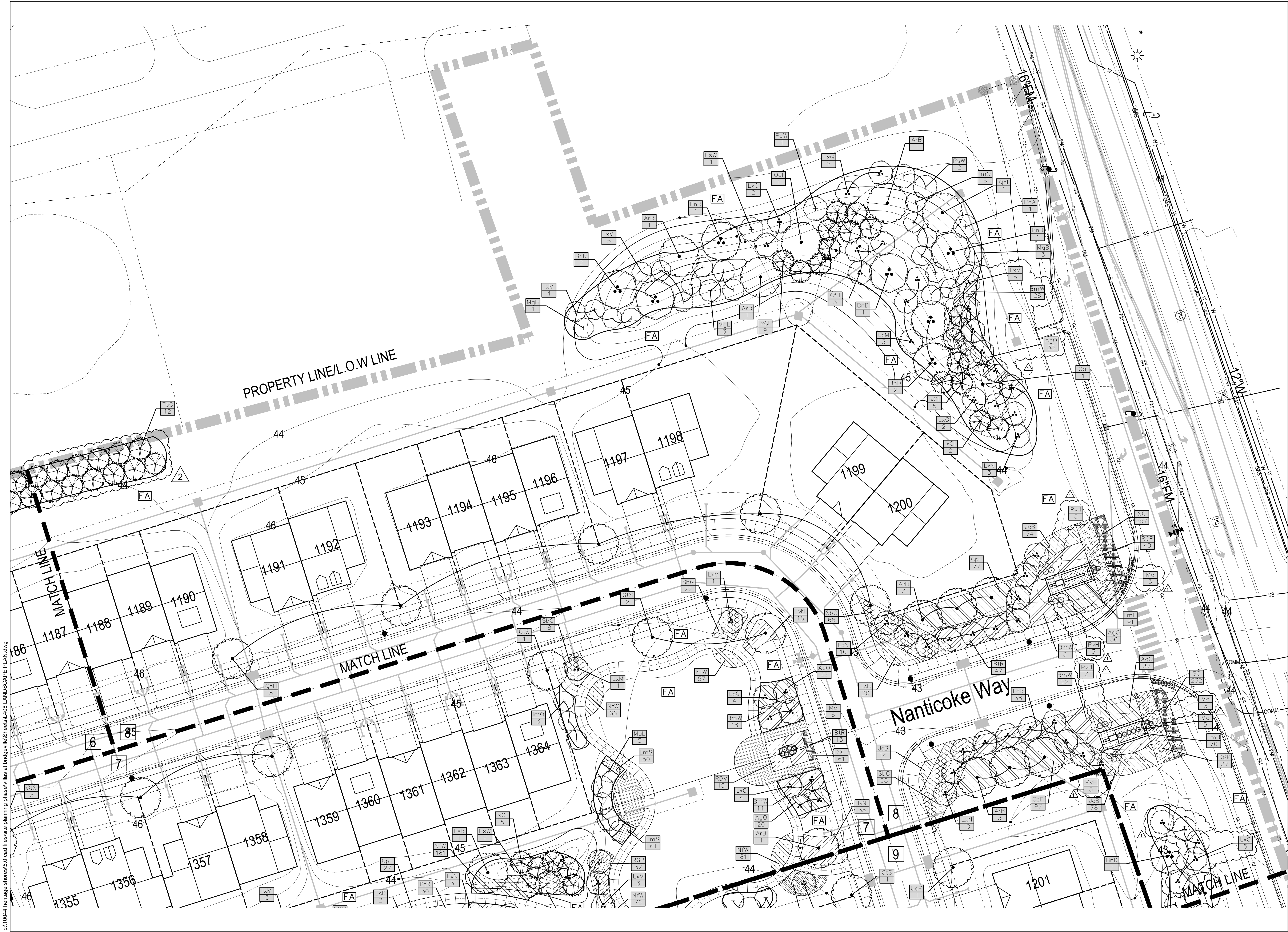
L407

NOT RELEASED FOR CONSTRUCTION



P:\110044 heritage shores\6.0 cad files\site planning phase\site plan\bridgeville\sheet\l407 LANDSCAPE PLAN.dwg

P:\110044_heritage_shores\6.0_cad_files\site_planning\phase\ Villas at Bridgeville\Sheet\L408_LANDSCAPE PLAN.dwg



Professional Certification:
 I hereby certify that these documents were prepared or approved by me, and that I am a duly licensed Landscape Architect under the laws of the State of Delaware.

License No. S1-000515
 Expiration Date: 01/31/23

THIS DOCUMENT AND THE SEALS AND DESIGNS INCORPORATED HEREIN ARE AN INSTRUMENT OF PROFESSIONAL SERVICE. IS THE PROPERTY OF LD7 STUDIO, LLC AND IS NOT TO BE COPIED, REPRODUCED, IN WHOLE OR IN PART FOR ANY OTHER PROJECT WITHOUT THE WRITTEN AUTHORIZATION OF LD7 STUDIO, LLC.

REVISIONS:

HUD SBMSSN.	01.14.22
UPD'D HUD SBMSSN.	08.03.22
Δ REV. PLNTG.	07.22.22
Δ REV. BUFFER	11.02.22

LANDSCAPE PLAN

DESIGN: DL
 DRAWN: TH
 CHECKED: DL

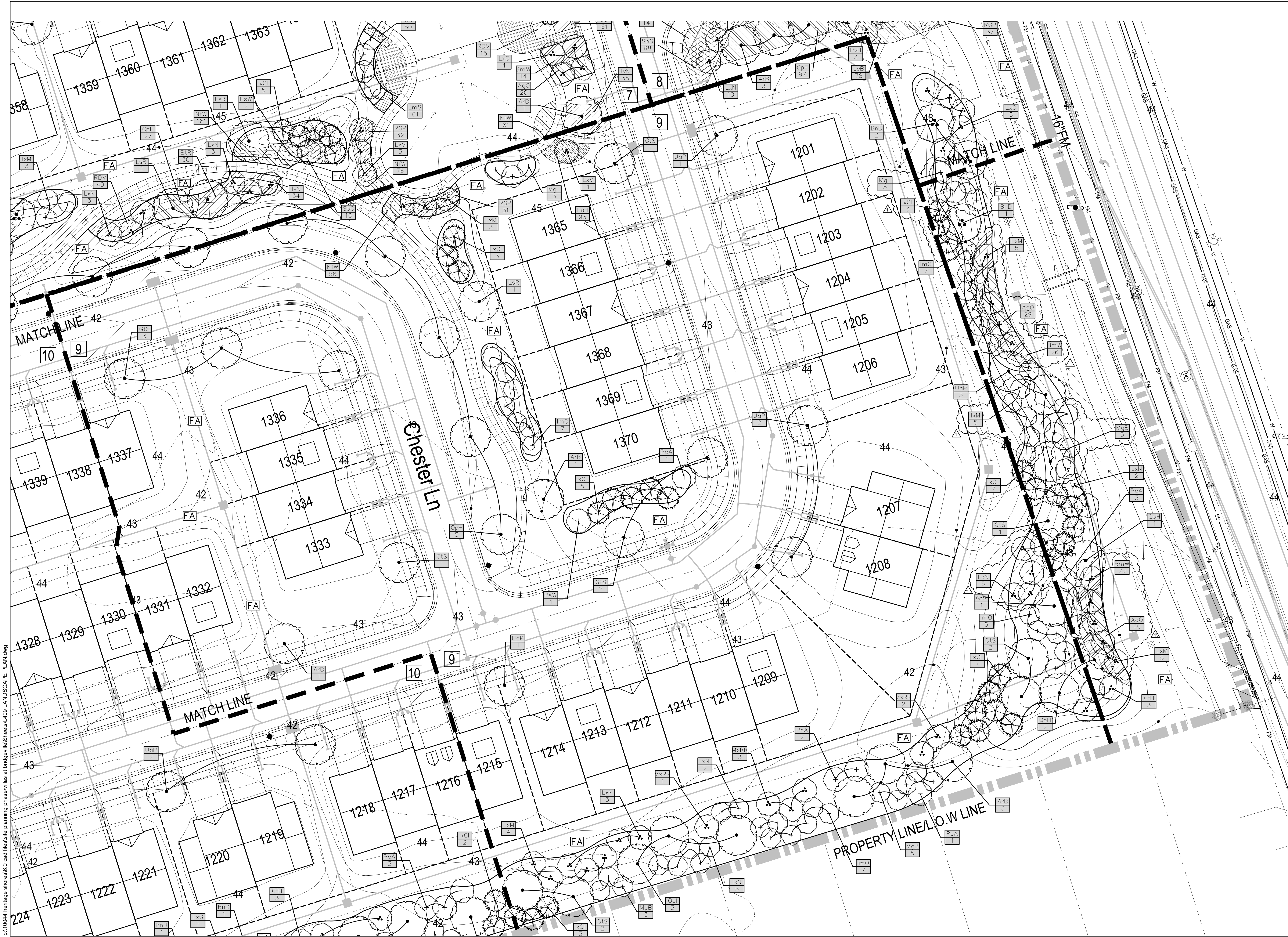
NORTH

Scale: 1" = 20'-0"

PROJECT NO: 16006
DATE: 00.00.00

L408

NOT RELEASED FOR CONSTRUCTION



P:\110044_heritage_shores\16.0_cad_files\site_planning_phase\l409_villas_at_bridgeville\sheet\l409_LANDSCAPE_PLAN.dwg

VILLAS AT BRIDGEVILLE
 SUSSEX COUNTY, BRIDGEVILLE, DELAWARE
 BROOKFIELD PROPERTIES DEVELOPMENT



Professional Certification:
 I hereby certify that these documents were prepared or approved by me, and that I am a duly licensed Landscape Architect under the laws of the State of Delaware.

License No. S1-0000515
 Expiration Date: 01/31/23

THIS DOCUMENT AND THE DESIGN AND DESIGN INCORPORATED HEREIN AS AN INSTRUMENT OF PROFESSIONAL SERVICE, IS THE PROPERTY OF LD7 STUDIO, LLC AND IS NOT TO BE COPIED, REPRODUCED, IN WHOLE OR IN PART FOR ANY OTHER PROJECT WITHOUT THE WRITTEN AUTHORIZATION OF LD7 STUDIO, LLC.

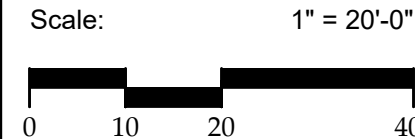
REVISIONS:

HUD SBMSSN	01.14.22
REVISIONS	08.02.22

LANDSCAPE PLAN

DESIGN: DL
 DRAWN: TH
 CHECKED: DL

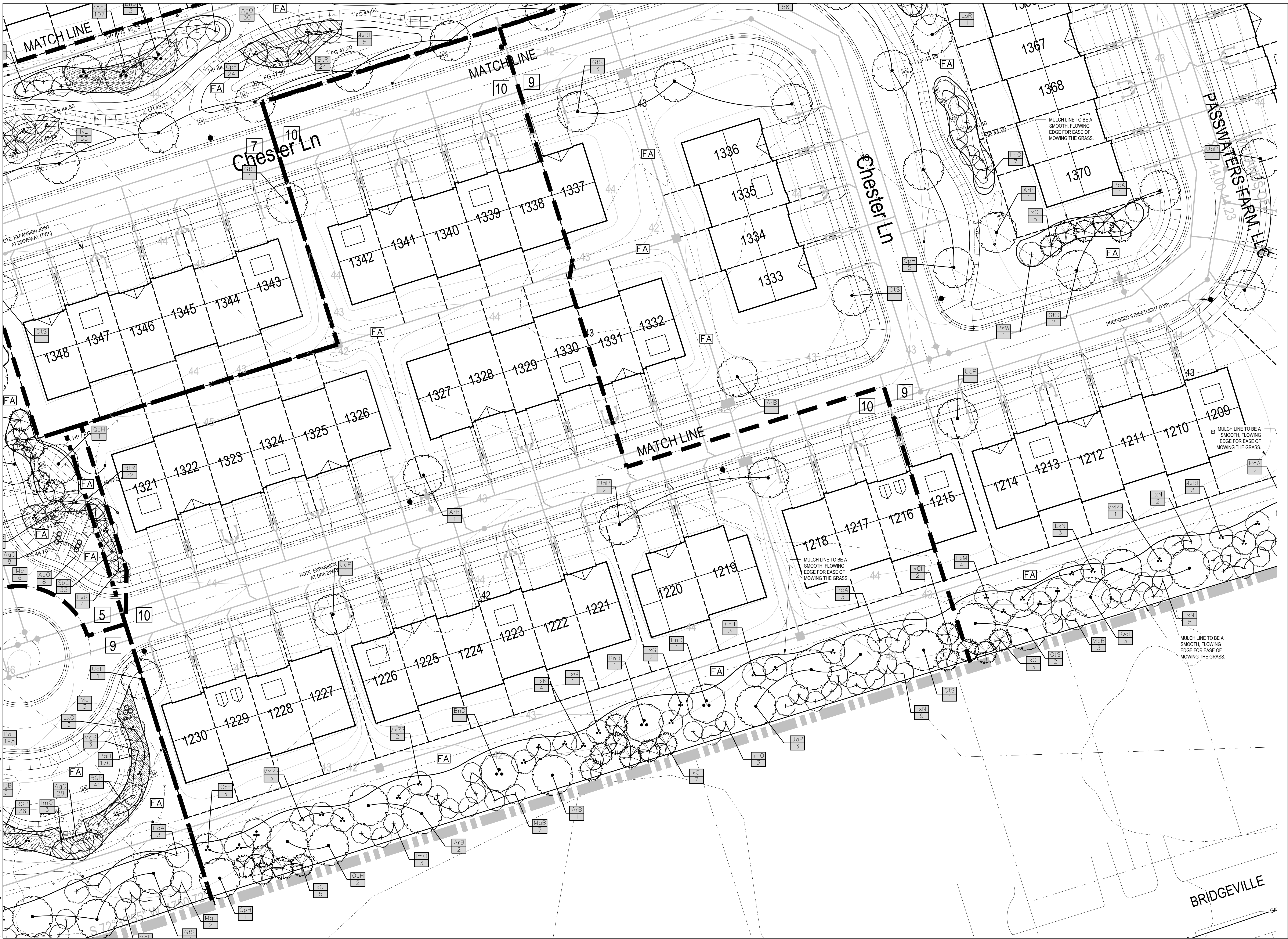
Scale: 1" = 20'-0"



PROJECT NO: 16006
 DATE: 00.00.00

L409

NOT RELEASED FOR CONSTRUCTION



P:\10044_heritage_shores\6.0_cad_files\site_planning_phase\l410_LANDSCAPE_PLAN.dwg



Professional Certification:
 I hereby certify that these documents were prepared or approved by me, and that I am a duly licensed Landscape Architect under the laws of the State of Delaware.

License No. S1-0000515
 Expiration Date: 01/31/23

THIS DOCUMENT AND THE DESIGN AND DESIGN INCORPORATED HEREIN AS AN INSTRUMENT OF PROFESSIONAL SERVICE, IS THE PROPERTY OF LD7 STUDIO, LLC AND IS NOT TO BE COPIED, REPRODUCED, IN WHOLE OR IN PART FOR ANY OTHER PROJECT WITHOUT THE WRITTEN AUTHORIZATION OF LD7 STUDIO, LLC.

REVISIONS:

HUD SBMSSN	01.14.22
UPD'D HUD SBMSSN	08.03.22

LANDSCAPE PLAN

DESIGN: DL
 DRAWN: TH
 CHECKED: DL

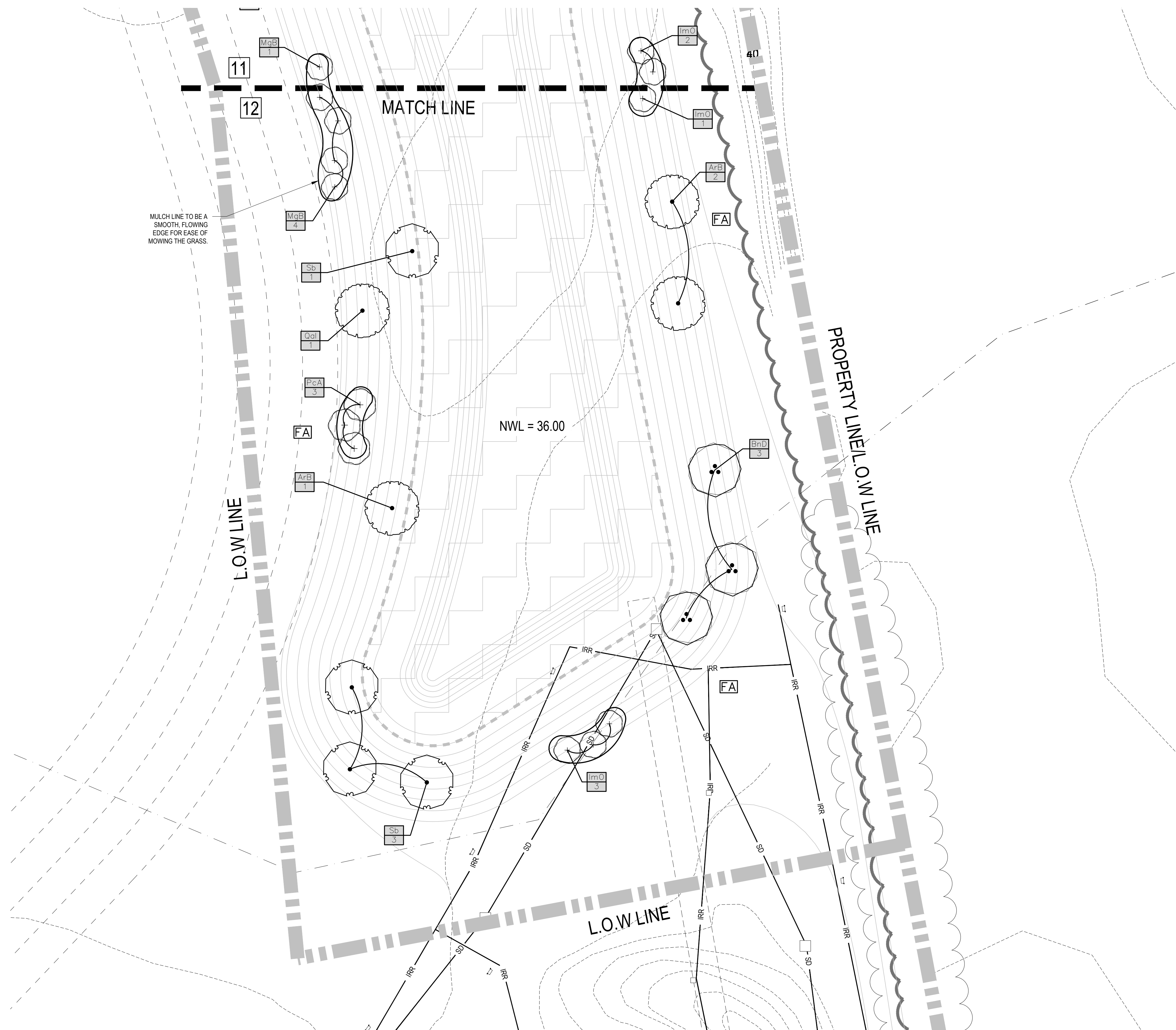
NORTH

Scale: 1" = 20'-0"

PROJECT NO: 16006
 DATE: 00.00.00

L410

NOT RELEASED FOR CONSTRUCTION



LD7 Studio

Landscape Architecture • Planning
4041 University Drive, Suite 202
Fairfax, VA 22030
703.448.3717
www.LD7studio.com

VILLAS AT BRIDGEVILLE
SUSSEX COUNTY, BRIDGEVILLE, DELAWARE

BROOKFIELD PROPERTIES DEVELOPMENT



Professional Certification:
I hereby certify that these documents were prepared or approved by me, and that I am a duly licensed Landscape Architect under the laws of the State of Delaware.

License No. S1-000515
Expiration Date: 01/31/23

THIS DOCUMENT AND THE DESIGN IDEAS INCORPORATED HEREIN AS AN INSTRUMENT OF PROFESSIONAL SERVICE, IS THE PROPERTY OF LD7 STUDIO, LLC AND IS NOT TO BE COPIED, REPRODUCED, IN WHOLE OR IN PART FOR ANY OTHER PROJECT WITHOUT THE WRITTEN AUTHORIZATION OF LD7 STUDIO, LLC.

REVISIONS:
HUD SBMSSN. 01.14.22
UPDTD HUD SBMSSN 08.03.22

LANDSCAPE PLAN

	DESIGN: DL
	DRAWN: TH
	CHECKED: DL

N O R T H

Scale: 1" = 20'-0"
0 10 20 40

PROJECT NO: 16006
DATE: 00.00.00

L412

VILLAS AT BRIDGEVILLE OVERALL SITE AREA PLANT LIST

EVERGREEN TREES									
Qty.	Key	Botanical Name	Common Name	Height	Caliper	Spread	Remarks	Native	
94	ImO	Ilex magland 'Oakland'	Oakland Holly	7'-8'		3 1/2 - 5'	B&B, full to ground with good seasonal flush		
31	IxM	Ilex x 'Mary Nell'	Mary Nell Holly	8'-10'		5 - 6'	B&B, full to ground with good seasonal flush		
23	IxN	Ilex x 'Nellie R Stevens'	Nellie Stevens Holly	8'-10'		5 - 6'	B&B, full to ground with good seasonal flush		
17	MgB	Magnolia grandiflora 'Brackens Brown Beauty'	Bracken's Southern Magnolia	8'-10'		5 - 6'	B&B, full to ground with good seasonal flush		
21	MgL	Magnolia grandiflora 'Little Gem'	Dwarf Southern Magnolia	8'-10'		5 - 6'	B&B, full to ground with good seasonal flush		
154	TpG	Thuja plicata 'Green Giant'	Western Red Cedar	6'-8'		3 - 4'	B&B, full to ground with good seasonal flush		
87	xCl	x Cupressocyparis leylandii	Leylandi Cypress	8'-10'		5 - 6'	B&B, full to ground with good seasonal flush		
ORNAMENTAL TREES									
Qty.	Key	Botanical Name	Common Name	Height	Caliper	Spread	Remarks	Native	
8	CcF	Cercis canadensis 'Forest Pansy'	Forest Pansy Redbud	8'-10'		1 1/2" min.	B&B, multi-trunk, 3 trunk minimum, full symmetrical branching	YES	
15	CfH	Cornus florida 'Cherokee Princess'	Cherokee Princess Dogwood	8'-10'		1 1/2" min.	B&B, full symmetrical branching	YES	
40	LxM	Lagerstroemia x 'Muskogee'	Muskogee Crape Myrtle	8'-10'		1 1/2" min.	B&B, multi-trunk, 3 trunk minimum, full symmetrical branching		
69	LxN	Lagerstroemia x 'Natchez'	Natchez Crape Myrtle	8'-10'		1 1/2" min.	B&B, multi-trunk, 3 trunk minimum, full symmetrical branching		
49	LxG	Lagerstroemia x 'Tuskegee'	Tuskegee Crape Myrtle	8'-10'		1 1/2" min.	B&B, multi-trunk, 3 trunk minimum, full symmetrical branching		
32	MxRR	Malus x 'Royal Raindrops'	Royal Raindrops Crab Apple	8'-10'		2 1/2" min.	B&B, uniform branching, full specimen		
20	PcA	Prunus cerasifera 'Atropurpurea'	Purple-leaf Plum	8'-10'		2 1/2" min.	B&B, uniform branching, full specimen		
7	PsW	Prunus serrulata 'Kwanzan'	Flowering Cherry	8'-10'		2 1/2" min.	B&B, uniform branching, full specimen	No	
SHADE TREES									
Qty.	Key	Botanical Name	Common Name	Height	Spread	Size	Remarks	Native	
65	ArB	Acer rubrum 'Autumn Blaze'	Autumn Blaze Red Maple	10'-12'		2 1/2" min.	B&B, full uniform crown, symmetrical branching, full specimen		
37	BnD	Betula nigra 'Duraheat'	Duraheat River Birch	10'-12'		2" min.	B&B, multi-trunk, 3 cane minimum, full symmetrical branching		
44	GtS	Gleditsia triacanthos inermis 'Shademaster'	Shademaster Locust	10'-12'		2 1/2" min.	B&B, full uniform crown, symmetrical branching, full specimen		
3	LsR	Liquidambar styraciflua 'Rotundioba'	Round-Lobed Sweet Gum	10'-12'		2 1/2" min.	B&B, full uniform crown, symmetrical branching, full specimen		
10	Qal	Quercus alba	White Oak	10'-12'		2 1/2" min.	B&B, full uniform crown, symmetrical branching, full specimen		
40	QpH	Quercus phellos 'Hightower'	Willow Oak	10'-12'		2 1/2" min.	B&B, full uniform crown, symmetrical branching, full specimen		
13	Sb	Salix babylonica	Weeping Willow	10'-12'		2 1/2" min.	B&B, full uniform crown, symmetrical branching, full specimen		
30	UaP	Ulmus americana 'Princeton'	Princeton American Elm	10'-12'		2 1/2" min.	B&B, full uniform crown, symmetrical branching, full specimen	YES	
SHRUBS									
Qty.	Key	Botanical Name	Common Name	Height	Spread	Size	Spacing	Remarks	Native
346	AgO	Abelia x grandiflora 'Rose Creek'	Rose Creek Abelia	12"-15"		18"-24"	#2 cont.	3' o.c. healthy vigorous, well-rooted & established in container	NO
500	BtR	Berberis thunbergii 'Rose Glow'	Rosy Glow Barberry	15"-18"		15"-18"	#2 cont.	3' o.c. healthy, vigorous, well-rooted & established in container	
230	BmW	Buxus microphylla 'Winter Gem'	Globe Winter Gem Boxwood	18"-24"		18"-24"	#3 cont.	4' o.c. healthy vigorous, well-rooted & established in container	
458	CpF	Chamaecyparis pisifera 'Golden Mops'	Golden Mops Falsecypress	15"-18"		15"-18"	#2 cont.	3' o.c. healthy, vigorous, well-rooted & established in container	
87	IvN	Ilex vomitoria 'Nana'	Dwarf Yaupon	18"-24"		18"-24"	#3 cont.	3' o.c. healthy vigorous, well-rooted & established in container	YES
55	IvL	Itea virginica 'Little Henry'	Virginia Sweetspire	18"-24"		18"-24"	#3 cont.	2' o.c. healthy vigorous, well-rooted & established in container	YES
301	JcB	Juniperus conferta 'Blue Pacific'	Blue Pacific Juniper	12"-15"		15"-18"	#2 cont.	3' o.c. healthy vigorous, well-rooted & established in container	
152	RDV	Rhododendron azalea 'Delaware Valley'	Delaware Valley Azalea	18"-24"		18"-24"	#3 cont.	3' o.c. healthy, vigorous, well-rooted & established in container	
343	RGP	Rhododendron azalea 'Gumpo Pink'	Gumpo Pink Azalea	12"-15"		18"-24"	#3 cont.	3' o.c. healthy, vigorous, well-rooted & established in container	
447	SbG	Spiraea x bumalda 'Goldmound'	Gold Mound Spirea	18"-24"		18"-24"	#3 cont.	3' o.c. healthy, vigorous, well-rooted & established in container	NO
GROUNDCOVERS / LAWN GRASS									
Qty.	Key	Botanical Name	Common Name	Cont.	Color	Spacing	Remarks	Native	
161	LmB	Liriope muscari 'Big Blue'	Big Blue Lilyturf	1 qt.		12" o.c.	full specimen, healthy, vigorous, well-rooted and established		
111	LmS	Liriope muscari 'Silvery Sunproof'	Silvery Sunproof Blue Lilyturf	1 qt.		12" o.c.	full specimen, healthy, vigorous, well-rooted and established		
729	SC	Seasonal Color	Based on Season	1 qt.	Varies	12" o.c.	drought-resistant, healthy, vigorous, well-rooted and established	NO	
	Fa	Festuca arundinacea	Tall Fescue			sod		YES	
PERENNIALS / GRASSES									
Qty.	Key	Botanical Name	Common Name	Cont.	Color	Spacing	Remarks	Native	
107	MAd	Miscanthus sinensis 'Adagio'	Adagio Eulalia Grass	#3 cont.		24" o.c.	full specimen, healthy, vigorous, well-rooted and established		
96	Mc	Muhlenbergia capillaris	Pink Muhly Grass	#2 cont.		30" o.c.	full specimen, healthy, vigorous, well-rooted and established	NO	
645	NfW	Nepeta x faassenii 'Walkers Low'	Walkers Low Catmint	#1 cont.	blue	16" o.c.	full specimen, healthy, vigorous, well-rooted and established	YES	
145	PvH	Panicum virgatum 'Heavy Metal'	Blue Switch Grass	#3 cont.		24" o.c.	full specimen, healthy, vigorous, well-rooted and established		
458	PaH	Pennisetum alopecuroides 'Hameln'	Hameln Dwarf Fountain Grass	#3 cont.		18" o.c.	full specimen, healthy, vigorous, well-rooted and established	YES	

P:\110044 heritage shores\6.0 cad files\site planning phase\l501 PLANT LIST.dwg



LD7 Studio

Landscape Architecture • Planning
4041 University Drive, Suite 202
Fairfax, VA 22030
703.448.3717
www.LD7studio.com

VILLAS AT BRIDGEVILLE
SUSSEX COUNTY, BRIDGEVILLE, DELAWARE
BROOKFIELD PROPERTIES DEVELOPMENT



Professional Certification:
I hereby certify that these documents were prepared or approved by me, and that I am a duly licensed Landscape Architect under the laws of the State of Delaware.

License No. S1-000515
Expiration Date: 01/31/23

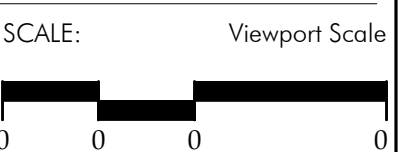
THIS DOCUMENT AND THE SEALS AND DESIGNS INCORPORATED HEREIN AS AN INSTRUMENT OF PROFESSIONAL SERVICE, IS THE PROPERTY OF LD7 STUDIO, LLC AND IS NOT TO BE COPIED, REPRODUCED, IN WHOLE OR IN PART FOR ANY OTHER PROJECT WITHOUT THE WRITTEN AUTHORIZATION OF LD7 STUDIO, LLC.

REVISIONS:

HUD SBMSSN.	01.14.22
UPD TD HUD SBMSSN	08.03.22
△ REV. PLNTG	07.22.22
△ REV. BUFFER	11.02.22

PLANT LIST

DESIGN: DL
DRAWN: TH
CHECKED: DL
N O R T H



PROJECT NO: 16006
DATE: 00.00.00

L501

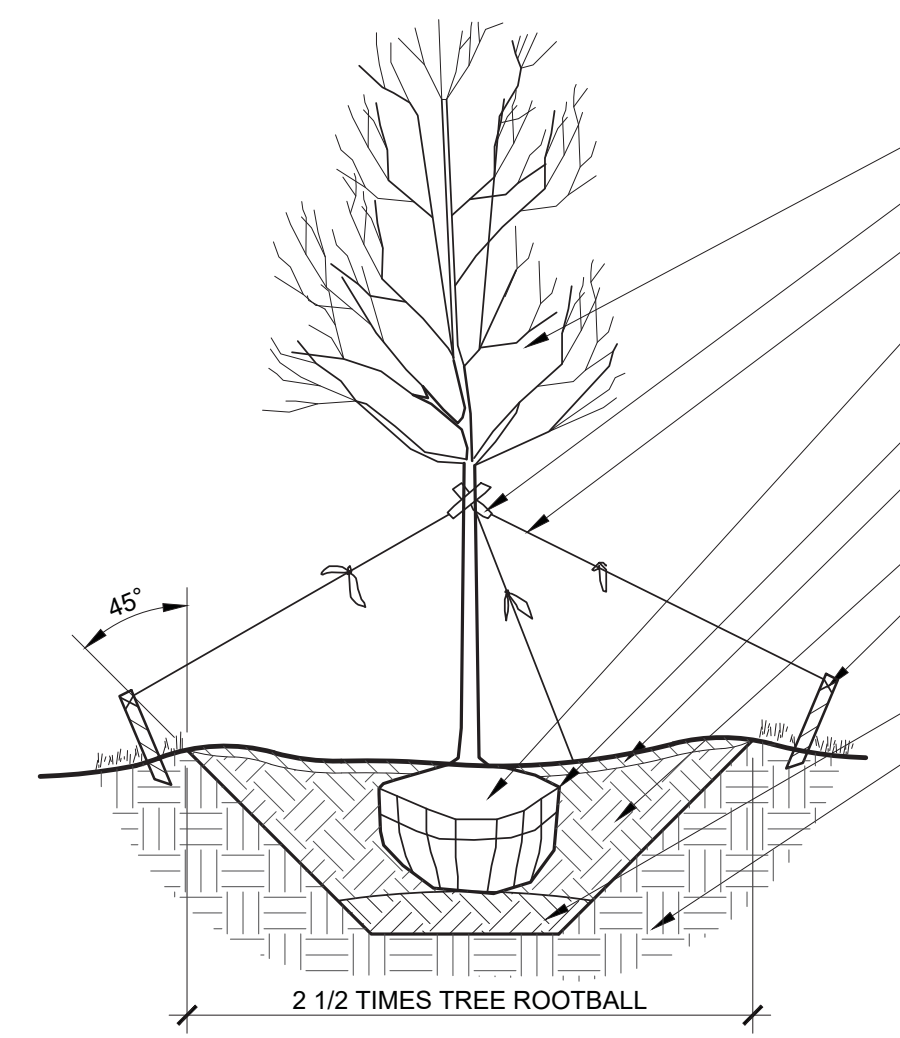
NOT RELEASED FOR CONSTRUCTION

PLANTING NOTES:

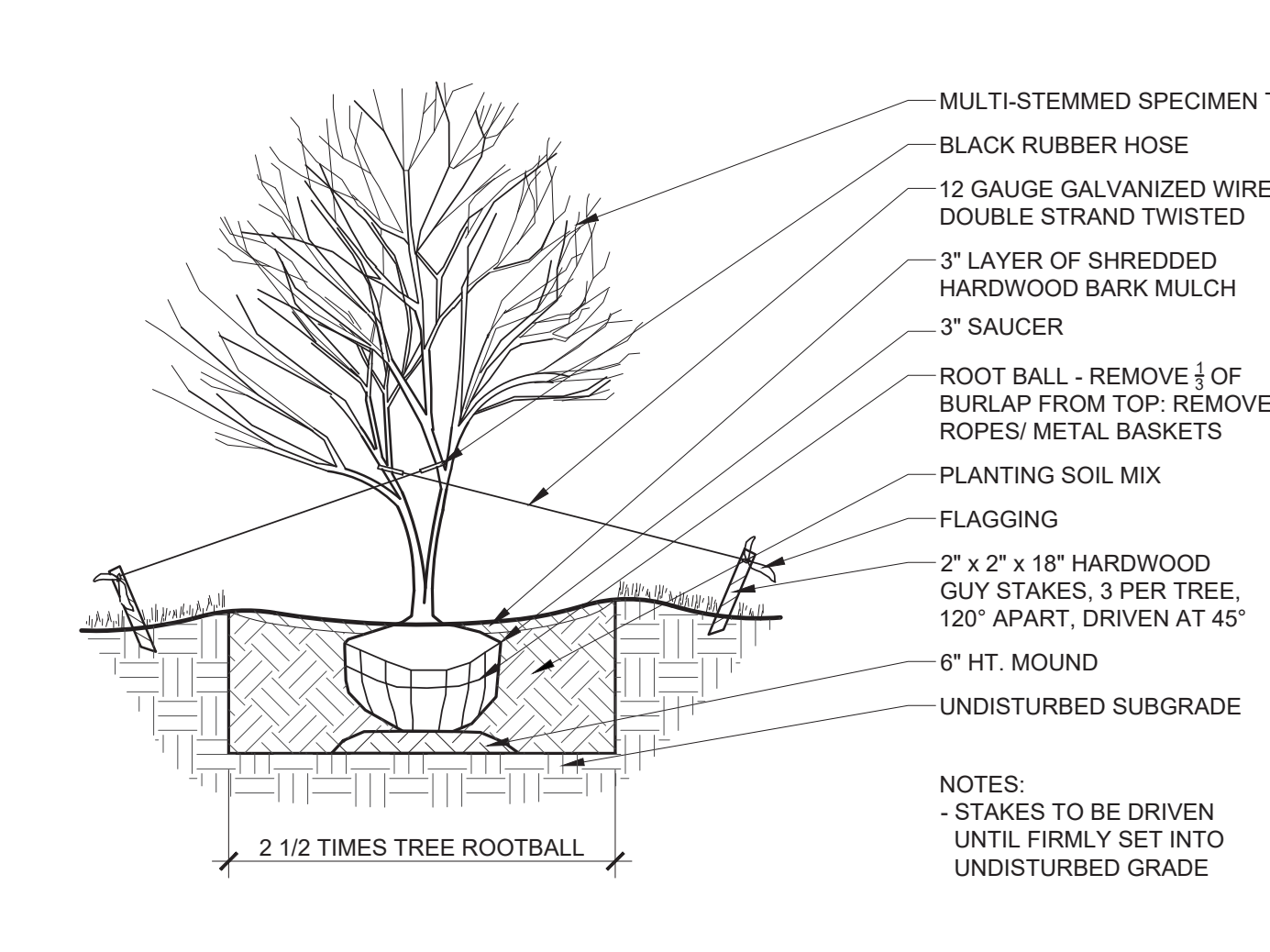
- PLANT MATERIAL SHALL BE FURNISHED AND INSTALLED AS INDICATED, INCLUDING ALL LABOR, MATERIALS, PLANTS, EQUIPMENT, INCIDENTALS, AND CLEAN-UP.
- THE CONTRACTOR SHALL BE RESPONSIBLE FOR PLANTING AT CORRECT GRADES AND ALIGNMENT. LAYOUT TO BE APPROVED BY OWNERS REPRESENTATIVE PRIOR TO INSTALLATION.
- PLANTS SHALL BE TYPICAL OF THEIR SPECIES AND VARIETY, HAVE NORMAL GROWTH HABITS, WELL-DEVELOPED DENSELY FOLIATED BRANCHES, AND VIGOROUS ROOT SYSTEMS, AND BE FREE FROM DEFECTS AND INJURIES.
- CONTRACTOR SHALL REPORT ANY SOIL OR DRAINAGE CONDITIONS CONSIDERED DETRIMENTAL TO GROWTH OF PLANT MATERIAL.
- ALL PLANT MATERIAL SHALL BE GUARANTEED BY THE CONTRACTOR TO BE IN VIGOROUS GROWING CONDITION. PROVISION SHALL BE MADE FOR A GROWTH GUARANTEE OF AT LEAST ONE YEAR FROM THE DATE OF ACCEPTANCE FOR TREES AND SHRUBS. REPLACEMENTS SHALL BE MADE AT THE BEGINNING OF THE FIRST SUCCEEDING PLANTING SEASON. ALL REPLACEMENTS SHALL HAVE A GUARANTEE EQUAL TO THAT STATED ABOVE.
- PLANT MATERIAL SHALL BE PLANTED ON THE DAY OF DELIVERY IF WHEN PRACTICAL. IN THE EVENT THAT THIS IS NOT POSSIBLE, THE CONTRACTOR SHALL PROTECT STOCK NOT PLANTED. PLANTS SHALL NOT REMAIN UNPLANTED FOR LONGER THAN A THREE-DAY PERIOD AFTER DELIVERY. ANY PLANTS NOT INSTALLED DURING THIS PERIOD SHALL BE REJECTED, UNLESS OWNER AND CONTRACTOR PROVIDE OTHERWISE BY WRITTEN AGREEMENT.
- QUALITY AND SIZE OF PLANTS, SPREAD OF ROOTS, AND SIZE OF ROOT BALL SHALL BE IN ACCORDANCE WITH THE MOST RECENT VERSION OF ANSI Z60 "AMERICAN STANDARD FOR NURSERY STOCK" PUBLISHED BY THE AMERICAN ASSOCIATION OF NURSERYMEN, INC.
- ALL PLANTS SHALL BE PLANTED IN AMENDED TOP SOIL THAT IS THOROUGHLY WATERED AND TAMPED AS BACK-FILLING PROCESSES. PLANTING MIX TO BE AS SHOWN ON PLANTING DETAILS. LARGE PLANTING AREAS TO INCORPORATE FERTILIZER AND SOIL CONDITIONERS AS STATED IN PLANTING SPECIFICATIONS.
- PLANTS SHALL NOT BE BOUND WITH WIRE OR ROPE AT ANY TIME SO AS TO DAMAGE THE BARK OR BREAK BRANCHES. PLANTS SHALL BE HANDLED FROM THE BOTTOM OF THE BALL ONLY.
- PLANTING OPERATIONS SHALL BE PERFORMED DURING PERIODS WITHIN THE PLANTING SEASON WHEN WEATHER AND SOIL CONDITIONS ARE SUITABLE AND IN ACCORDANCE WITH ACCEPTED LOCAL PRACTICE. PLANTS SHALL NOT BE INSTALLED IN TOP SOIL THAT IS IN A MUDDY OR FROZEN CONDITION. ALL PLANT MATERIAL SHALL BE SPRAYED WITH "WILT-PRUF" OR EQUAL AS PER MANUFACTURER'S INSTRUCTIONS.
- NO PLANT, EXCEPT GROUND COVERS, SHALL BE PLANTED LESS THAN TWO FEET FROM EXISTING STRUCTURES AND SIDEWALKS.
- SET ALL PLANTS PLUMB AND STRAIGHT, SET AT SUCH LEVEL THAT A NORMAL OR NATURAL RELATIONSHIP TO THE GROUND IF THE PLANT WITH THE GROUND SURFACE WILL BE ESTABLISHED. LOCATE THE PLANT IN THE CENTER OF THE PIT.
- ALL INJURED ROOTS SHALL BE PRUNED TO MAKE CLEAN ENDS BEFORE PLANTING UTILIZING CLEAN, SHARP TOOLS. IT IS ADVISABLE TO PRUNE APPROXIMATELY 1/3 OF THE GROWTH OF LARGE TREES (2" CALIPER AND GREATER) BY THE REMOVAL OF SUPERFLUOUS BRANCHES, THOSE WHICH CROSS, THOSE WHICH RUN PARALLEL, ETC. MAIN LEADER OF TREES SHALL NOT BE CUT BACK. LONG SIDES BRANCHES SHALL BE SHORTENED.
- EACH TREE AND SHRUB SHALL BE PRUNED IN ACCORDANCE WITH STANDARD HORTICULTURAL PRACTICE TO PRESERVE THE NATURAL CHARACTER OF PLANT. PRUNING SHALL BE DONE WITH CLEAN, SHARP TOOLS.
- TREES SHALL BE SUPPORTED IMMEDIATELY AFTER PLANTING. ALL TREES 6" AND GREATER IN CALIPER SHALL BE GUYED. SMALLER TREES SHALL BE STAKED. GUYING WIRES AND STAKES SHALL BE INSTALLED AS INDICATED. THE LANDSCAPE CONTRACTOR SHALL REMOVE STAKING, GUYING AND TREE WRAP AT THE END OF ONE YEAR MAINTENANCE AND GUARANTEE PERIOD.
- ALL PLANTING BEDS SHALL BE MULCHED WITH 3" LAYER OF DOUBLE SHREDDED HARDWOOD BARK MULCH.
- NEW PLANTING AREAS AND SOD SHALL BE ADEQUATELY IRRIGATED OR WATERED TO ESTABLISH THE PROPOSED PLANTS AND LAWN.
- ALL PLANTS SHOWN ON THE APPROVED LANDSCAPE PLAN SHALL BE INSTALLED, INSPECTED AND APPROVED BY THE LANDSCAPE ARCHITECT OR HIS REPRESENTATIVE. THE LANDSCAPE ARCHITECT SHALL TAKE INTO ACCOUNT SEASONAL CONSIDERATIONS IN THIS REGARD. TREES, SHRUBS, VINES AND GROUNDCOVER AS REQUIRED BY OR ASSOCIATED WITH A SUBDIVISION OR SITE PLAN APPROVED BY THE PLANNING AUTHORITIES SHALL BE INSTALLED DURING THE FOLLOWING PLANTING SEASONS: LAWNS: 03/15 TO 06/15 AND 09/15 TO 12/01

THE FOLLOWING TREE VARIETIES SHALL NOT BE PLANTED DURING THE FALL PLANTING SEASON DUE TO THE HAZARDS ASSOCIATED WITH PLANTING THESE TREES IN THIS SEASON:
 ACER RUBRUM POPULUS SPP.; BETULA SPP.; PRUNUS SPP.; CARPINUS SPP.; PYRUS SPP.; CRATAEGUS SPP.; QUERCUS SPP.; KOELREUTERIA PANICULATA SALIX SPP.; LIQUIDAMBAR STYRACIFLUA TILIA TOMENTOSA. LIRODENDRON TULIPIFERA ZELKOVA; PLATANUS ACERIFOLIA;
 ANY PLANTING INSTALLED IN CONFLICT WITH THIS REQUIREMENT MUST RECEIVE WRITTEN APPROVAL OF THE LANDSCAPE ARCHITECT PRIOR TO PLANTING. FAILURE TO COMPLY WITH THESE REQUIREMENTS WILL REQUIRE THE REMOVAL OF THE PLANTING IN QUESTION. THIS REQUIREMENT DOES NOT APPLY TO SEEDING OR SODDING OR PLANTINGS SPECIFICALLY FOR SOIL STABILIZATION PURPOSES. PLANTINGS ASSOCIATED WITH ANY LOT GIVEN A CERTIFICATE OF OCCUPANCY OUTSIDE THESE PERIODS SHALL BE PROVIDED DURING THE PREVIOUS OR NEXT APPROPRIATE SEASON.

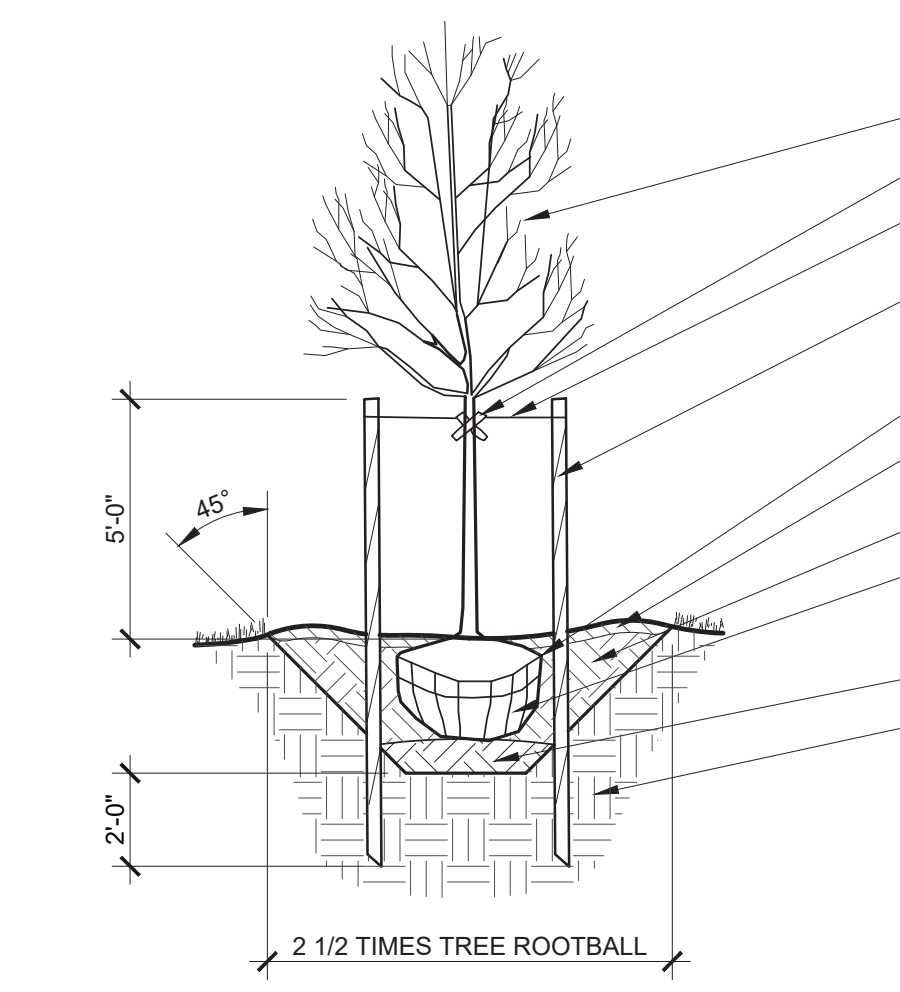
- ALL DISTURBED AREAS SHALL BE TREATED WITH 4" TOP SOIL AND SEEDED IN ACCORDANCE WITH PERMANENT STABILIZATION METHODS INDICATED ON SOIL EROSION AND SEDIMENT CONTROL SHEET.
- CONTRACTOR SHALL BE SOLELY RESPONSIBLE FOR ALL PLANT MAINTENANCE, INCLUDING SHRUBS AND GROUNDCOVER, AND SHALL MAINTAIN AREA IN A WEED AND WEEDS FREE CONDITION THROUGHOUT THE ONE-YEAR GUARANTEE PERIOD, UNLESS OTHERWISE SPECIFIED.
- ALL DIMENSIONS TO BE TAKEN FROM BACK OF CURB.
- CONTRACTOR SHALL LAYOUT AND CLEARLY STAKE ALL PROPOSED IMPROVEMENTS INCLUDED ON THIS PLAN.
- CONTRACTOR IS RESPONSIBLE FOR CONTACTING UTILITY COMPANY PRIOR TO BEGINNING CONSTRUCTION FOR LOCATION OF ALL UTILITY LINES. TREES SHALL BE LOCATED A MINIMUM OF 5' FROM WATER CONNECTIONS. CONTRACTOR SHALL BE LIABLE FOR DAMAGE TO ANY AND ALL PUBLIC OR PRIVATE UTILITIES.
- CONTRACTOR TO VERIFY PLANT LIST TOTALS WITH QUANTITIES SHOWN ON PLAN. LANDSCAPE ARCHITECT SHALL BE ALERTED BY CONTRACTOR OF ANY DISCREPANCIES PRIOR TO FINAL BID NEGOTIATION. UNIT PRICES FOR ALL MATERIAL SHALL BE SUPPLIED TO THE OWNER AT BIDDING TIME.
- ALL MATERIALS SHALL BE SUBJECT TO APPROVAL BY THE LANDSCAPE ARCHITECT. OWNER SHALL RECEIVE TAG FROM EACH PLANT SPECIES AND A LIST OF PLANT SUPPLIERS. WHERE ANY REQUIREMENTS ARE OMITTED FROM THE PLANT LIST, THE PLANTS FURNISHED SHALL MEET THE NORMAL REQUIREMENTS FOR THE VARIETY PER THE AMERICAN STANDARD FOR NURSERY STOCK, LATEST EDITION, PUBLISHED BY THE AMERICAN ASSOCIATION OF NURSERYMEN (AAN). PLANTS SHALL BE PRUNED PRIOR TO DELIVERY ONLY UPON THE APPROVAL OF THE LANDSCAPE ARCHITECT.
- WHERE TREES ARE PLANTED IN ROWS, THEY SHALL BE UNIFORM IN SIZE AND SHAPE.
- SIZES SPECIFIED IN THE PLANT LIST ARE MINIMUM SIZES TO WHICH THE PLANTS ARE TO BE JUDGED. FAILURE TO MEET MINIMUM SIZE ON ANY PLANT WILL RESULT IN REJECTION OF THAT PLANT.
- ALL PLANTS SHALL BE FRESHLY DUG, SOUND, HEALTHY, VIGOROUS, WELL BRANCHED, FREE OF DISEASE, INSECT EGGS, AND LARVAE, AND SHALL HAVE ADEQUATE ROOT SYSTEMS.
- ALL CONTAINER GROWN MATERIAL SHALL BE HEALTHY, VIGOROUS, WELL-ROOTED PLANTS AND ESTABLISHED IN THE CONTAINER IN WHICH THEY ARE SOLD. THE PLANTS SHALL HAVE TOPS WHICH ARE GOOD QUALITY AND ARE IN A HEALTHY GROWING CONDITION.
- GROUPS OF SHRUBS SHALL BE PLACED IN A CONTINUOUS MULCH BED WITH SMOOTH CONTINUOUS LINES. ALL MULCHED BED EDGES SHALL BE CURVILINEAR IN SHAPE FOLLOWING THE CONTOUR OF THE PLANT MASS. TREES LOCATED WITHIN FOUR FEET OF SHRUB BEDS SHALL SHARE SAME MULCH BED.
- NO EXISTING TREES SHALL BE REMOVED WITHOUT WRITTEN AUTHORIZATION FROM THE OWNER EXCEPT WHERE NOTED ON PLANS. NO GRUBBING SHALL OCCUR WITHIN EXISTING TREE AREAS.
- TREES SHALL BE LOCATED A MINIMUM OF 3' - 4' FROM WALLS AND WALKS WITHIN THE PROJECT. IF CONFLICTS ARISE BETWEEN ACTUAL SIZE OF AREA AND PLANS, CONTRACTOR SHALL CONTACT LANDSCAPE ARCHITECT FOR RESOLUTION. FAILURE TO MAKE SUCH CONFLICTS KNOWN TO THE OWNER OR LANDSCAPE ARCHITECT WILL RESULT IN CONTRACTOR'S LIABILITY TO RELOCATE MATERIALS.
- LARGE GROWING PLANTS ARE NOT TO BE PLANTED IN FRONT OF WINDOWS, UNDER BUILDING OVERHANGS, OR IN DRAINAGE SWALES. SHRUBS PLANTED NEAR H.V.A.C. UNITS TO BE LOCATED SO THAT SHRUBS AT MATURITY WILL MAINTAIN 1' AIRSPACE BETWEEN UNIT AND PLANT.
- CONTRACTOR TO SLIGHTLY ADJUST PLANT LOCATIONS IN THE FIELD AS NECESSARY TO BE CLEAR OF DRAINAGE SWALES AND UTILITIES. FINISHED PLANTING BEDS SHALL BE GRADED SO AS TO NOT IMPED DRAINAGE AWAY FROM BUILDINGS.
- TREE STAKING AND GUYING SHALL BE DONE PER DETAILS. CONTRACTOR SHALL ENSURE THAT TREES REMAIN VERTICAL AND UPRIGHT FOR THE DURATION OF THE GUARANTEE PERIOD.
- ALL TREE PITS, SHRUB BEDS AND PREPARED PLANTING BEDS ARE TO BE COMPLETELY EXCAVATED IN ACCORDANCE WITH THE PLANTING DETAILS.
- MULCH IS TO BE FINE BARK TYPE FOR TREES AND SHRUBS. FINE BARK MULCH IS TO BE USED FOR PERENNIAL BEDS AND WITHIN THE EXISTING TREES TO REMAIN. CONTRACTOR TO SUBMIT SAMPLE FOR APPROVAL PRIOR TO INSTALLATION.
- CROWN OF ROOT BALL SHALL BE HIGHER (AFTER SETTLING) THAN ADJACENT SOIL.
- TAGS AND TWINE ARE TO BE REMOVED AND BURLAP IS TO BE ROLLED BACK ONE-THIRD ON ALL B&B PLANT MATERIAL. REMOVE BURLAP IF IT IS NON-BIODEGRADABLE. FOR STREET TREES TAGS, TWINE, CORD, BURLAP AND WIRE BASKET TO BE CUT 12" DOWN SIDE OF ROOT BALL AND REMOVED FROM PROJECT SITE.
- SHRUBS, BULBS AND GROUND COVERS SHALL BE TRIANGULARLY SPACED AT SPACING SHOWN ON PLANTING PLANS.
- SHADE TREES: HEIGHT SHALL BE MEASURED FROM THE CROWN OF THE ROOT BALL TO THE TOP OF MATURE GROWTH. SPREAD SHALL BE MEASURED TO THE END OF BRANCHING EQUALLY FROM THE CROWN FROM THE CENTER OF THE TRUNK. MEASUREMENTS ARE NOT TO INCLUDE ANY TERMINAL GROWTH. SINGLE TRUNK TREES SHALL BE FREE OF "CROTCHES" THAT COULD BE POINTS OF WEAK LIMB STRUCTURE OR DISEASE INFESTATION. SHRUBS: HEIGHT SHALL BE MEASURED FROM THE GROUND TO THE AVERAGE HEIGHT OF THE TOP OF THE PLANT. SPREAD SHALL BE MEASURED TO THE END OF BRANCHING EQUALLY AROUND THE SHRUB MASS. MEASUREMENTS ARE NOT TO INCLUDE ANY TERMINAL GROWTH.
- CONTRACTOR SHALL INSPECT ALL BULBS AND BRING ANY DAMAGED MATERIAL TO THE ATTENTION OF THE OWNER PRIOR TO PLANTING.
- ALL SEASONAL COLOR OR SHALL BE TRIANGULARLY SPACED AT SPACING SHOWN ON PLANTING PLANS. ONE YEAR (FOUR ROTATIONS) OF SEASONAL COLOR IS TO BE BID. INSTALL THE FIRST ROTATION WHICH IS "IN SEASON" AT TIME THAT ADJACENT PLANTINGS ARE INSTALLED.
- ALL SUBSTITUTIONS OF PLANT MATERIAL ARE TO BE REQUESTED IN WRITING TO THE LANDSCAPE ARCHITECT AND APPROVED BY THE OWNER. IF CONTRACTOR FAILS TO SUBMIT A WRITTEN REQUEST, IT WILL RESULT IN LIABILITY TO THE CONTRACTOR.
- ALL CONTRACTORS SHALL BE REQUIRED TO COMPLETELY REMOVE ALL TRASH, DEBRIS AND EXCESS MATERIALS FROM THE WORK AREA AND THE PROPERTY (ESPECIALLY AT ALL CURB, GUTTERS AND SIDEWALKS) DAILY DURING INSTALLATION.
- DEAD PLANTS ARE TO BE REMOVED FROM THE JOB BY THE CONTRACTOR WEEKLY. CONTRACTOR SHALL MAINTAIN AN UPDATED, COMPREHENSIVE LIST OF ALL DEAD MATERIALS REMOVED FROM THE JOB SITE. A COPY OF THE LIST IS TO BE SUBMITTED TO THE OWNER AT THE END OF EVERY MONTH DURING THE CONTRACT PERIOD.
- TOPSOIL REQUIRED FOR SOIL MIXES AND SPECIAL SEEDING AREAS SHALL BE PROVIDED BY LANDSCAPE CONTRACTOR. CONTRACTOR MUST LOAD, HAUL, MIX, AND SPREAD ALL TOPSOIL AND OTHER SOIL ADDITIVES AS REQUIRED.
- THE INTENT OF THE PROJECT IS TO HAVE NATURAL DRIFTS OF BULBS/PERENNIALS IN PLANTING. KEEP SWEEPS OF SIMILAR BULBS/PERENNIALS IN SEPARATE GROUPS.
- CONTRACTOR SHALL BE RESPONSIBLE TO RE-GRADE, HYDRO-SEED, STRAW MULCH, AND TACK ALL LAWN AREAS DISTURBED AS THE RESULT OF HIS WORK.
- ALL EXISTING SOIL TO BE REMOVED FROM PERENNIAL BEDS TO A DEPTH OF 12" AND REPLACED WITH SOIL MIX PER DETAIL.
- CONTRACTOR SHALL GUARANTEE ALL LANDSCAPE IMPROVEMENTS, INCLUDING SEEDING, FOR ONE FULL YEAR AS REQUIRED BY THE SPECIFICATIONS. CONTRACTOR MUST CONTACT THE OWNER AT LEAST TEN WORKING DAYS IN ADVANCE TO SCHEDULE ACCEPTANCE INSPECTION(S). CONTRACTOR MUST REPLACE ALL DEAD OR UNACCEPTABLE PLANTS DURING THE FOLLOWING RECOMMENDED PLANTING SEASON.
- THE SPECIFICATIONS FOR ALL WORK INCLUDED IN THIS CONTRACT SHALL BE LANDSCAPE ARCHITECTURE SPECIFICATIONS GUIDELINES FOR BALTIMORE-WASHINGTON METROPOLITAN AREA, CURRENT EDITION, UNLESS OTHERWISE NOTED ON THESE PLANS.
- ALL PLANTING SHALL CONFORM TO THE REQUIREMENTS OF VIRGINIA DEPARTMENT OF HIGHWAYS AND TRANSPORTATION'S "GUIDELINES FOR PLANTING ALONG VIRGINIA'S ROADWAYS".
- ANY PLANTING WHICH IS SHOWN ADJACENT TO CONDENSER UNITS SHALL BE PLANTED TO SCREEN THE UNITS. SHOULD THE CONDENSER UNITS BE INSTALLED IN LOCATIONS DIFFERENT FROM THOSE SHOWN ON THE PLAN IT WILL BE THE CONTRACTOR'S RESPONSIBILITY TO INSTALL THE MATERIALS AROUND THE CONDENSERS AND TO ADJUST OTHER ADJACENT PLANTING ACCORDINGLY.



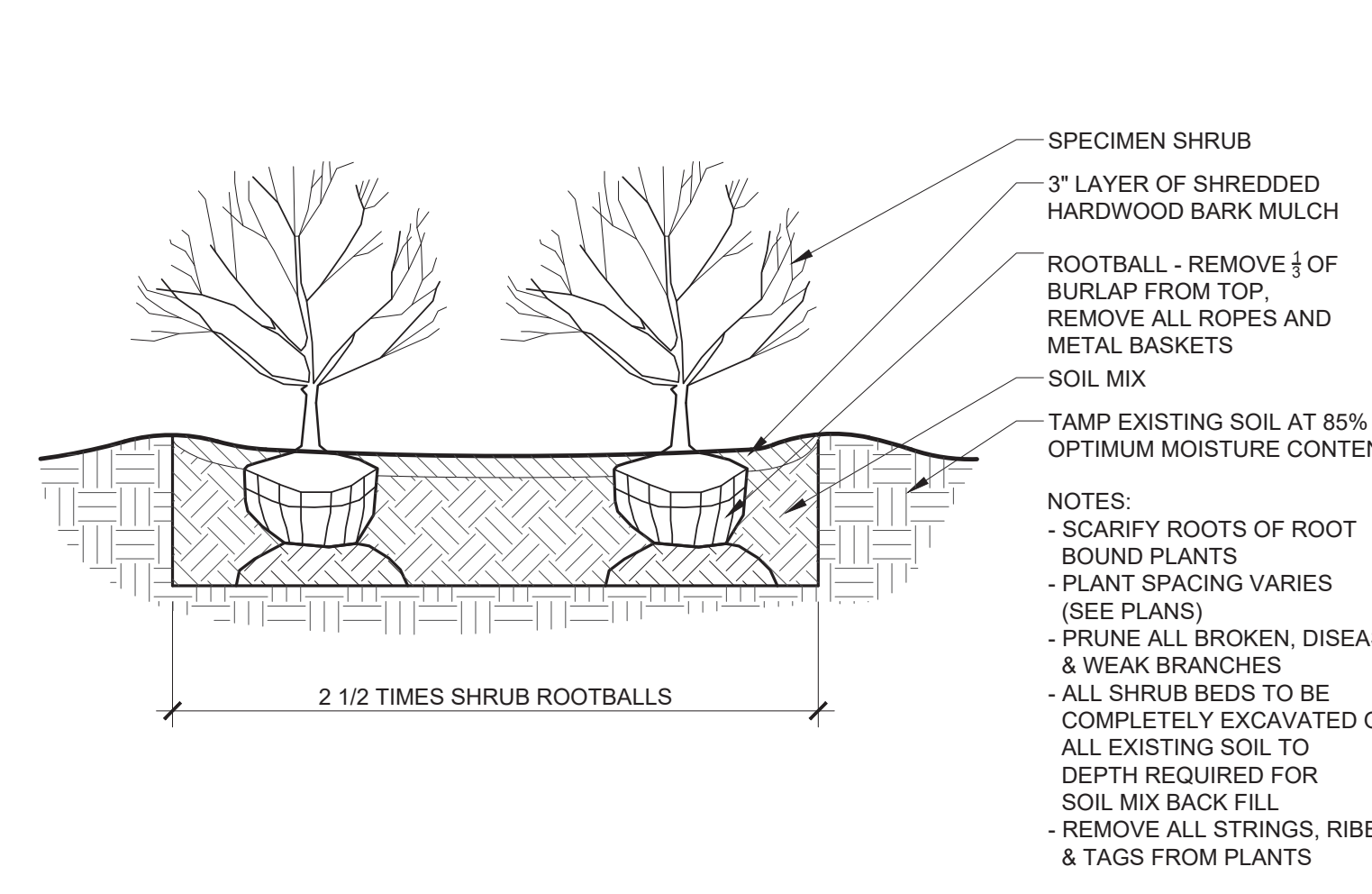
1 TREE GUYING PLANTING - SPECIMEN TREE SECTION LD-001
 Scale: 1/4" = 1'-0"



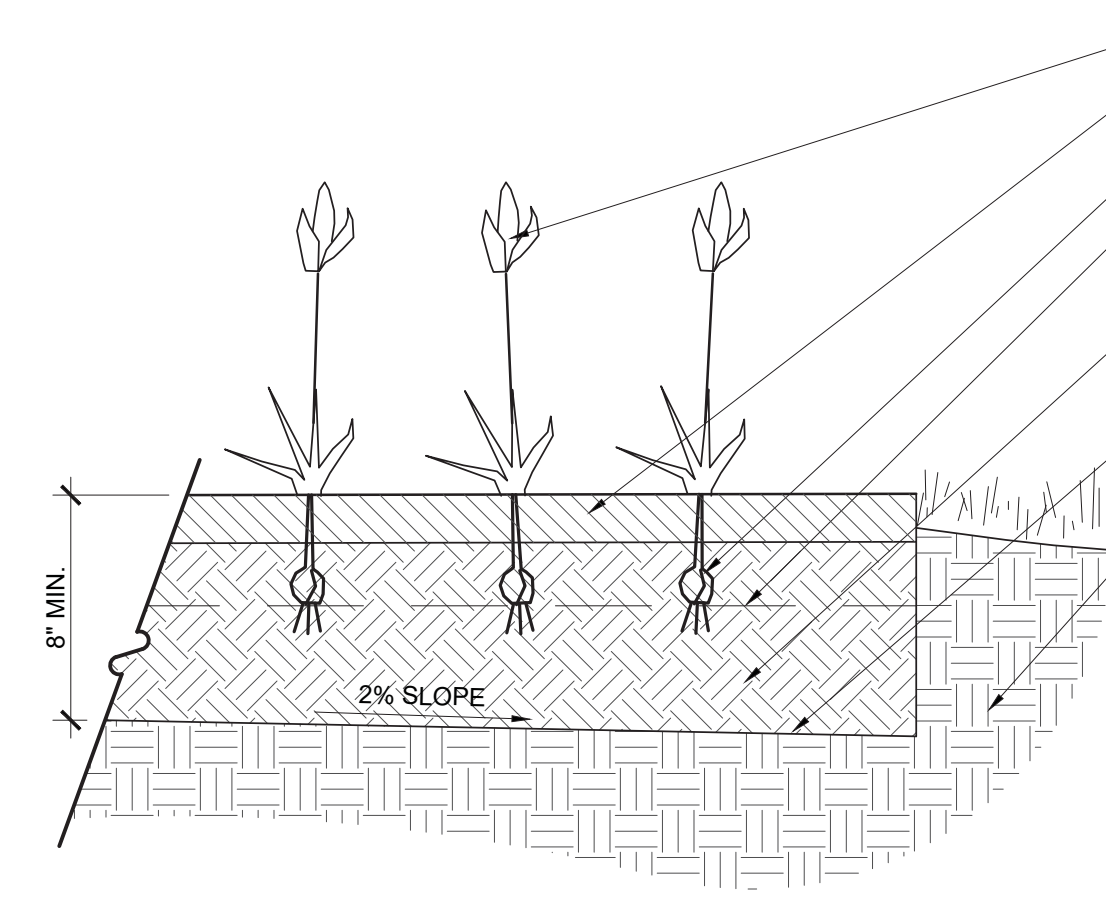
2 TREE GUYING PLANTING - MULTI-STEMMED SECTION LD-003
 Scale: 1/4" = 1'-0"



3 TREE PLANTING SECTION LD-002
 Scale: 1/4" = 1'-0"



4 SHRUB PLANTING SECTION LD-004
 Scale: 1/2" = 1'-0"



5 ANNUAL & PERENNIAL PLANTING SECTION LD-006
 Scale: 1" = 1'-0"

PLANT SPACING CHART AS SPECIFIED ON PLANT LIST

SPACING 'D'	ROW 'A'	NUMBER OF PLANTS PER SQUARE FOOT
6" o.c.	5 1/4" o.c.	4.62
8" o.c.	6 7/8" o.c.	2.60
10" o.c.	8 5/8" o.c.	1.66
12" o.c.	10 3/8" o.c.	1.15
15" o.c.	13" o.c.	0.74
18" o.c.	15 5/8" o.c.	0.51
24" o.c.	20 3/4" o.c.	0.29
30" o.c.	26" o.c.	0.18
36" o.c.	31 1/8" o.c.	0.13
42" o.c.	36 3/8" o.c.	0.09
48" o.c.	41 5/8" o.c.	0.07

6 TRIANGULAR SPACING FOR SHRUBS - GROUND COVERS - BULBS AND PERENNIALS PLAN LD-007
 Scale: NTS

PLANTING MIX NOTES:

- THE RECOMMENDED PLANTING MEDIUM SHOULD CONTAIN GOOD TOP SOIL THAT WILL SUSTAIN PLANT GROWTH.
- THE TOP SOIL SHALL NOT BE LACKING IN POTASSIUM, PHOSPHORUS, MAGNESIUM OR CALCIUM. THE TOP SOIL SHALL NOT CONTAIN ANY MATERIALS TOXIC TO PLANT GROWTH.
- THE TOP SOIL SHALL BE A SANDY CLAY LOAM OR A SILTY CLAY LOAM WITH WELL AGGREGATED CLAYS AND A MINIMUM OF 4% (FOUR PERCENT) ORGANIC MATTER.
- THE SOIL PH RANGE SHOULD BE WITHIN 6.5 TO 8.5 AND ADJUSTED AS NECESSARY FOR INDIVIDUAL PLANT SPECIES REQUIREMENTS.
- A SOIL TEST SHALL BE PERFORMED BY A FULL-SERVICE TESTING COMPANY AND THE RESULTS SHALL BE PROVIDED TO THE LANDSCAPE ARCHITECT PRIOR TO INSTALLATION OF PLANTING MEDIUM.
- IF A LOCAL REPUTABLE TESTING COMPANY CANNOT BE EMPLOYED, A&L LABS IS AVAILABLE TO CONDUCT THE TESTING. CONTACT THEM AT:
 A&L ANALYTICAL LABORATORIES, INC.
 2790 WHITTEN ROAD
 MEMPHIS, TN 38133
 1-800-264-4522
- THE LAB SHALL PERFORM AN S1A TEST AND SUBMIT THE RESULTS TO STUDIO 39 LANDSCAPE ARCHITECTURE, PC.

Professional Certification:
 I hereby certify that these documents were prepared or approved by me, and that I am a duly licensed Landscape Architect under the laws of the State of Delaware.
 License No. S1-0000515
 Expiration Date: 01/21/23

THIS DOCUMENT AND THE SEALS AND DESIGN INCORPORATED HEREIN ARE THE PROPERTY OF LD7 STUDIO, LLC AND NOT TO BE COPIED, REPRODUCED, IN WHOLE OR IN PART FOR ANY OTHER PROJECT WITHOUT THE WRITTEN AUTHORIZATION OF LD7 STUDIO, LLC.

REVISIONS:

OWNER REVIEW	04.29.22
--------------	----------

LANDSCAPE DETAILS AND NOTES

DESIGN: DL
 DRAWN: TH
 CHECKED: DL

SCALE: Viewport Scale

PROJECT NO: 16006
 DATE: 00.00.00

L601