


TOWN OF BRIDGEVILLE APPROVALS

PLANNING & ZONING COMMISSION CHAIRPERSON: _____ DATE: _____

TOWN ENGINEER: _____ DATE: _____

APPROVED:  12/15/23
ROGER A. GROSS, P.E. (DE REGISTRATION NO. 7842) DATE: _____

UTILITY DETAIL PLAN
FOR PROPERTY KNOWN AS:
BRIDGEVILLE SELF STORAGE ADDITION
ALSO KNOWN AS:
18116 SUSSEX HIGHWAY
PREPARED FOR:
BRIDGEVILLE LAUNDRY & CAR WASH & MINI STORAGE, LLC
SITUATE IN:
TOWN OF BRIDGEVILLE * SUSSEX COUNTY
STATE OF DELAWARE
TAX PARCEL #: 131-10.00-83.00
SCALE: NO SCALE

DATE	REVISION	CHKD	DRAWN BY: HMG	DATE: 12 FEBRUARY 2017	SHEET#: U-1
3/20/23	CHANGE BMP TO ECW	R.A.G.			
11/29/22	ELIMINATE ROUTE 13B ENTRANCE	R.A.G.			
9/5/19	REVISED PER BRIDGEVILLE REVIEW	R.A.G.			
8/15/19	REVISED PER BRIDGEVILLE REVIEW	R.A.G.			
6/18/19	REVISED PER BRIDGEVILLE REVIEW	R.A.G.			
9/6/18	REVISED PER DELDOT REVIEW	R.A.G.			
6/13/18	REVISED PER DELDOT REVIEW	R.A.G.			
11/16/17	REVISED PER DELDOT REVIEW	R.A.G.			

 **MERESTONE CONSULTANTS, INC.**
ENGINEERS - PLANNERS - SURVEYORS

5215 WEST WOODMILL DRIVE
WILMINGTON, DE 19808
PH: 302-992-7900
FAX: 302-992-7911

33516 CROSSING AVENUE
UNIT 1, FIVE POINTS SQUARE
LEWES, DE 19958
PH: 302-226-5880

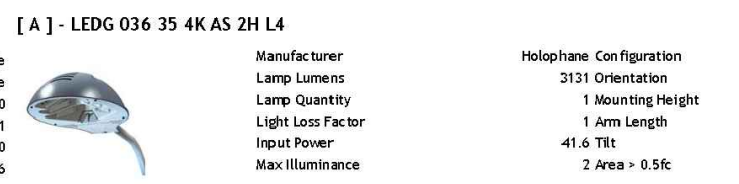
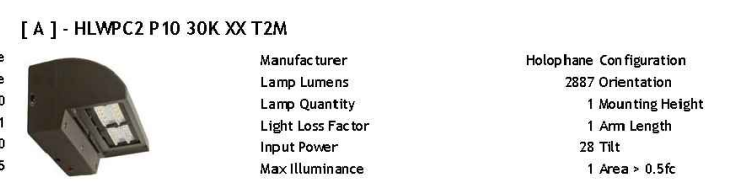
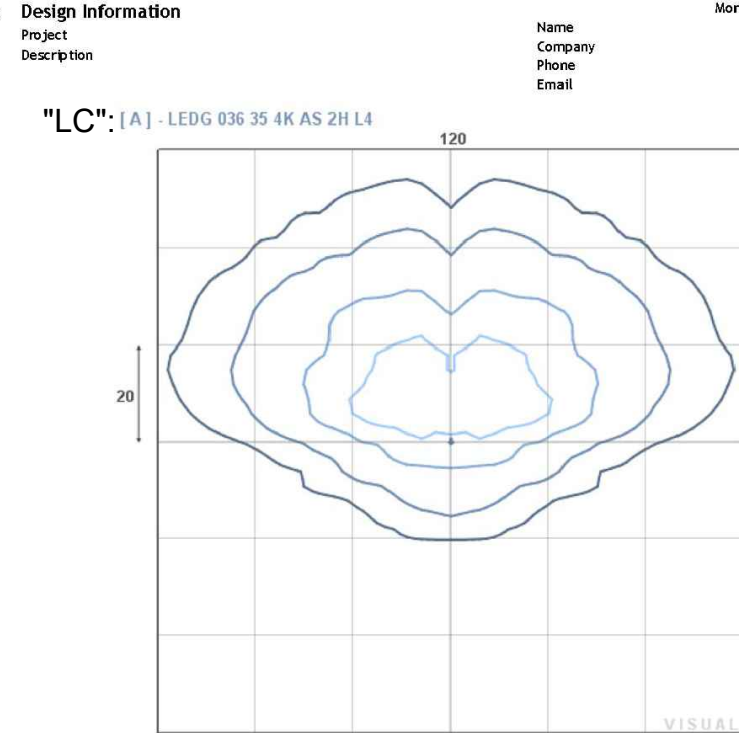
Visual - Template Tool



Visual - Template Tool



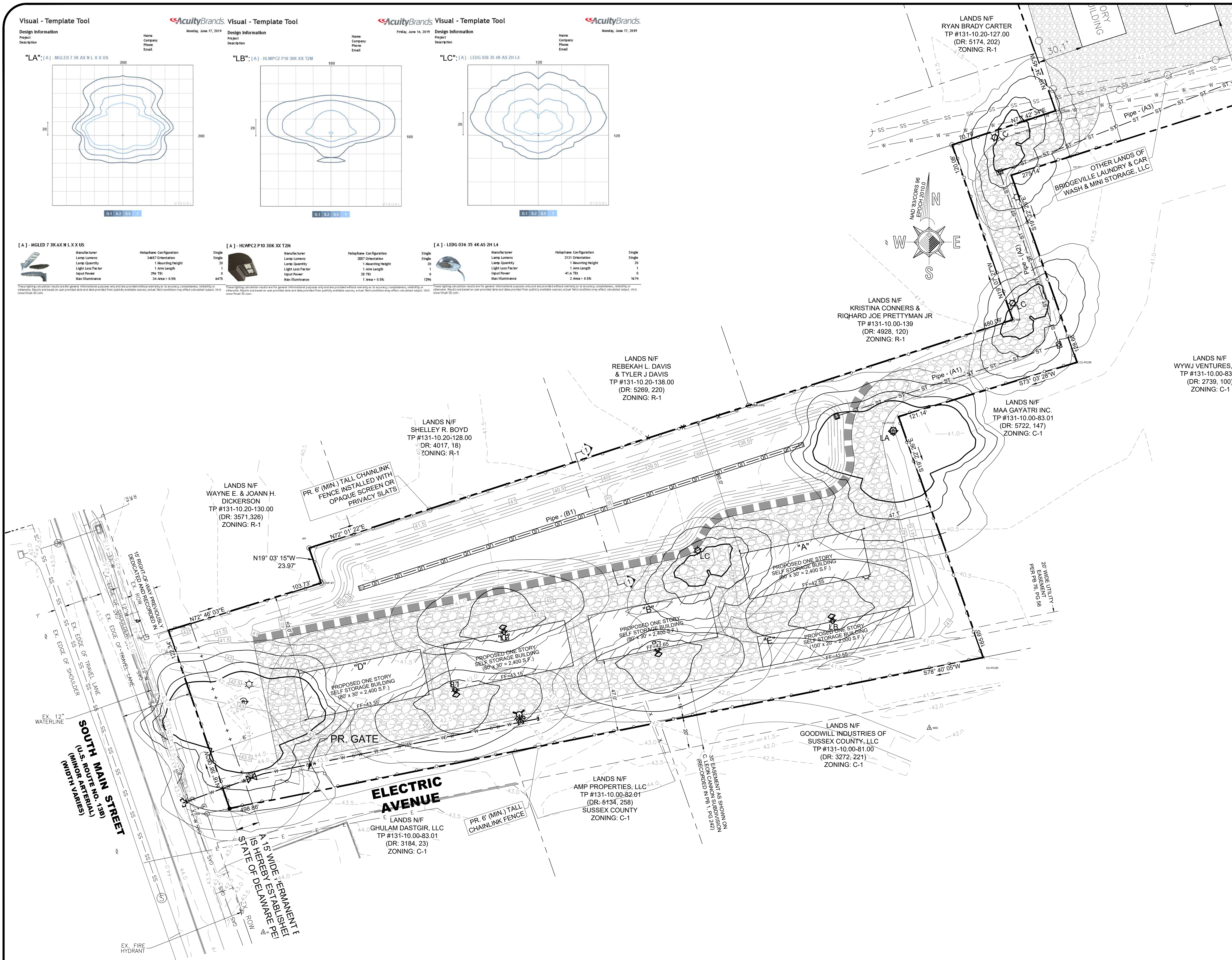
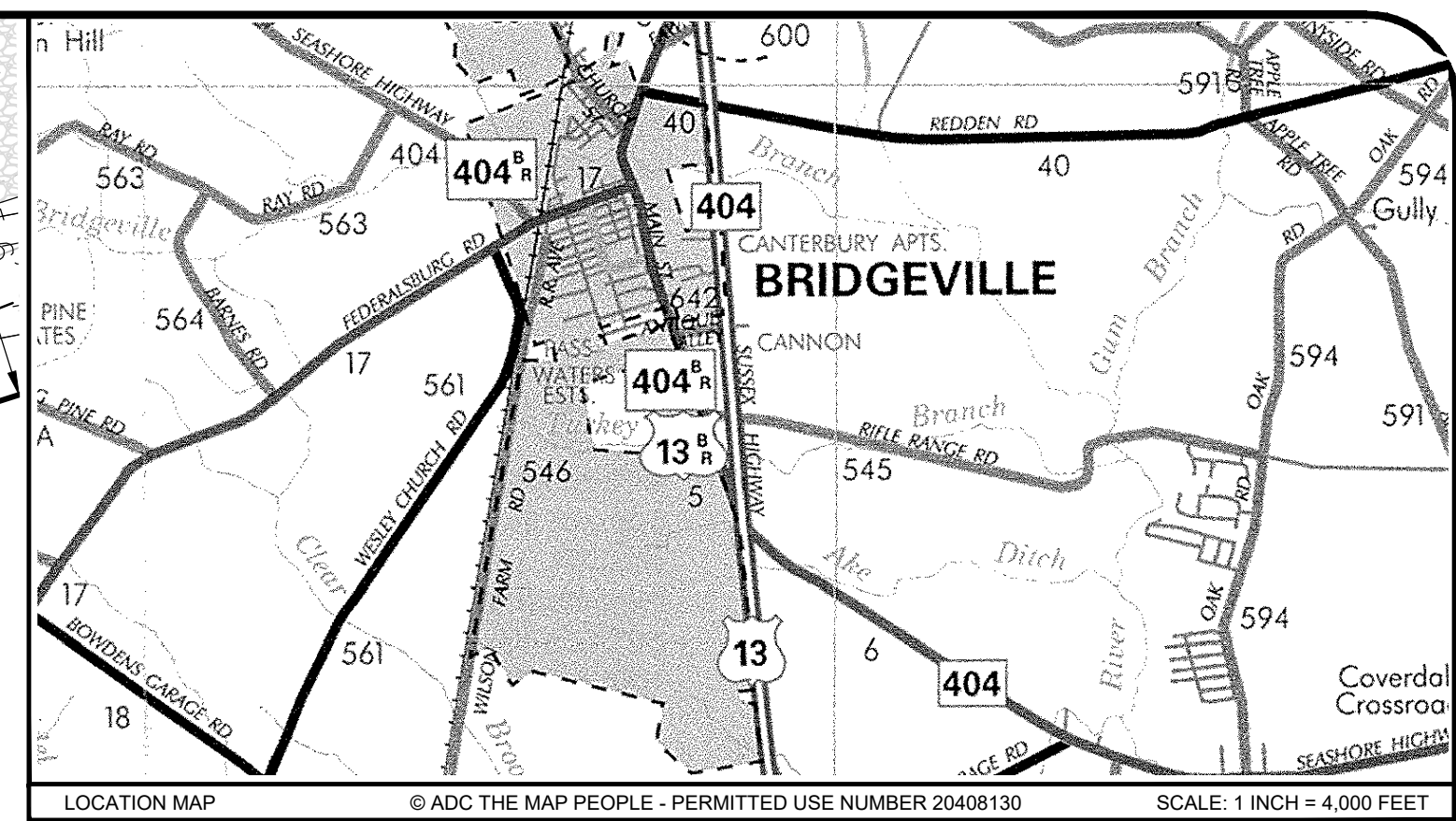
Visual - Template Tool



These lighting calculations are for general informational purposes only and are provided without warranty. No liability is assumed for any errors or omissions. Results are based on user provided data and data provided from publicly available sources. Actual field conditions may affect calculated output. Visit www.lumen.com

These lighting calculations are for general informational purposes only and are provided without warranty. No liability is assumed for any errors or omissions. Results are based on user provided data and data provided from publicly available sources. Actual field conditions may affect calculated output. Visit www.lumen.com

These lighting calculations are for general informational purposes only and are provided without warranty. No liability is assumed for any errors or omissions. Results are based on user provided data and data provided from publicly available sources. Actual field conditions may affect calculated output. Visit www.lumen.com



LEGEND

PROPERTY LINE	---
BUILDING SETBACK LINE	BSL
CENTERLINE ROAD	---
EXISTING CONTOUR	---265---
EASEMENT LINE	---
STORM SEWER	---STORM---STORM---
SANITARY SEWER	SS
WATER LINE	W W
FENCE LINE	X X
PR. FENCE	○
CRUSHED STONE	▨
BLACKTOP PAVEMENT	▩
SIGN	○
CLEAN OUT	CO
FIRE HYDRANT	⊕
HANDICAP MARKER	♿
UTILITY POLE	⊕
TEST BORE	⊕

LIGHTING & LANDSCAPING PLAN
 FOR PROPERTY KNOWN AS:
BRIDGEVILLE SELF STORAGE ADDITION
 ALSO KNOWN AS:
 18116 SUSSEX HIGHWAY
 PREPARED FOR:
BRIDGEVILLE LAUNDRY & CAR WASH & MINI STORAGE, LLC
 SITUATE IN:
TOWN OF BRIDGEVILLE * SUSSEX COUNTY
 STATE OF DELAWARE
 TAX PARCEL # 131-10.00-83.00
 SCALE: 1" = 30'

<p>MERESTONE CONSULTANTS, INC. ENGINEERS - PLANNERS - SURVEYORS</p>	
3/20/23 CHANGE BMP TO ECW R.A.G. 11/29/22 ELIMINATE ROUTE 13B ENTRANCE R.A.G. 9/5/19 REVISED PER BRIDGEVILLE REVIEW R.A.G.	5215 WEST WOODMILL DRIVE WILMINGTON, DE 19808 PH: 302-992-7900 FAX: 302-992-7911
33516 CROSSING AVENUE UNIT 1, FIVE POINTS SQUARE LEWES, DE 19958 PH: 302-226-5880	DATE: 12/16/2019 SHEET#: L1 PLAN #: 23282R - 327584

APPROVED: 12/15/23
 ROGER A. GROSS, P.E. (DE REGISTRATION NO. 7842) DATE:

