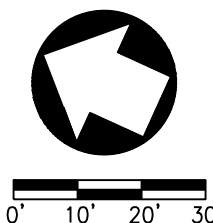
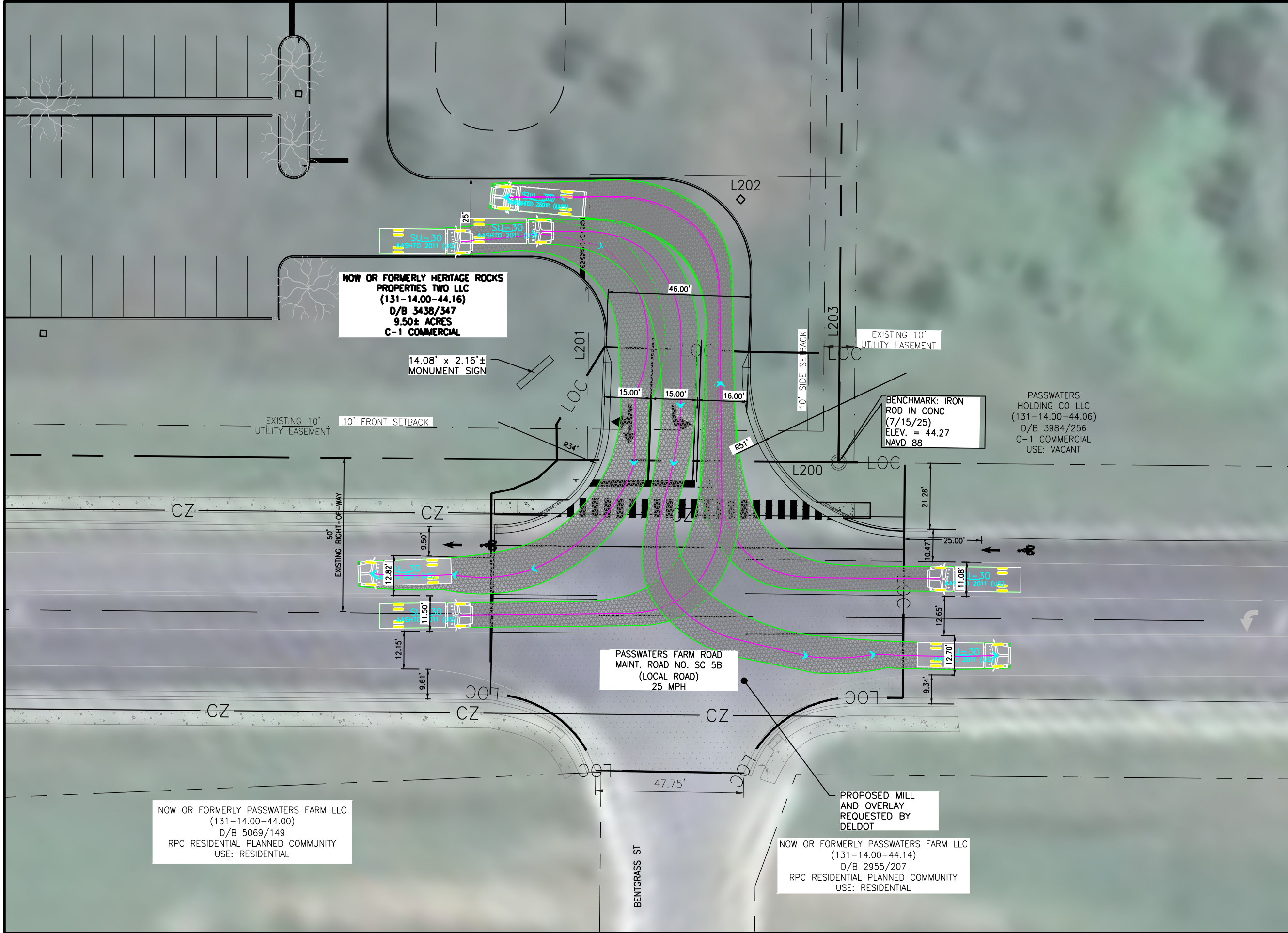


C:\Projects\2025\250095-A Horizon Farm Credit Civil Eng Design\Drawings\Exhibits\DelDOT\Truck Turn 250095.dwg, 4/16/2026 8:21 AM, Cheri R. Hochstedler



**EX-1**

4/17/26

DRAWING NO.

**HORIZON FARM CREDIT DHQ  
SU-30 TRUCK TURN ANALYSIS**

**GMB**

GEORGE, MILES & BUHR, LLP  
ARCHITECTS & ENGINEERS  
SALISBURY, ENGLAND LEWES, SECONO, ORK  
302 - 628 - 1421 FAX 302 - 628 - 6350  
EMAIL: gmb@gmbnet.com

DRAWN BY:	CRH
CK. BY:	BRJ
JOB NO.:	250095
SCALE:	1" = 30'
DATE:	APRIL 2026